



TRAFFIC REPORT 2012

TRAFFIC BRANCH HEADQUARTERS
HONG KONG POLICE FORCE

Distribution

Internal

DCP OPS
D OPS
ACP SUP
RC HKI
RC KE
RC KW
RC NTS
RC NTN
RC MAR
CSP PPRB
STSO, TPT, Transport Division
Force Librarian

External

Government Secretariat and Government Departments

Secretary for Education
Secretary for the Environment
Secretary for Transport and Housing
Secretary for Home Affairs
Commissioner for Transport
Commissioner for Census and Statistics
Commissioner for Insurance
Director of Government Logistics
Director of Highways
Director of Information Services
Director of Lands
Director of Social Welfare
Executive Manager (Professional Services)³, Hospital Authority
The Consumer Council Library

Judiciary

Chief Magistrate
Principal Magistrate (7 copies)

Public Transport Operators

City Bus Ltd.
New World First Bus
New Lantao Bus Co., (1973) Ltd.
The Kowloon Motor Bus Co., (1933) Ltd.
Mass Transit Railway Corporation

Advisory Bodies

Chairman and Members of Transport Advisory Committee (17 copies)
Members of the Road Safety Council (36 copies)
Executive Secretary, Transport Complaints Unit
Secretary of the Traffic Accident Victims Assistance Advisory Committee

Tertiary Institutes

Librarian, Chinese University of Hong Kong
Librarian, City University of Hong Kong
Librarian, Hong Kong Baptist University
Librarian, Hong Kong Polytechnic University
Librarian, Hong Kong Shue Yan University
Librarian, University of Hong Kong
Librarian, Lingnan University
Librarian, The Hong Kong Institute of Education
Librarian, The Hong Kong University of Science and Technology
Librarian, The Open University of Hong Kong

District Councils

New Territories North

The Chairman, North District Council
The Chairman, Yuen Long District Council
The Chairman, Tuen Mun District Council
The Chairman, Tai Po District Council

New Territories South

The Chairman, Shatin District Council
The Chairman, Kwai Tsing District Council
The Chairman, Tsuen Wan District Council
The Chairman, Islands District Council

Kowloon West

The Chairman, Yau Tsim Mong District Council
The Chairman, Sham Shui Po District Council
The Chairman, Kowloon City District Council

Kowloon East

The Chairman, Wong Tai Sin District Council
The Chairman, Kwun Tong District Council
The Chairman, Sai Kung District Council

Hong Kong Island

The Chairman, Eastern District Council
The Chairman, Wanchai District Council
The Chairman, Central & Western District Council
The Chairman, Southern District Council

Others

Hong Kong School of Motoring, Road Safety Department, Operations Controller
Quality Driver Training Centre Ltd

List of Contents

	<u>Pages</u>
Introduction and Overall Situation	1-3
Explanatory Notes	4
 <u>Part A - Traffic Accidents and Casualties Report</u>	
Table 1 - Traffic Accidents by Police Regions	5
Table 2 - Traffic Accident Trends from 2008 – 2012	5
Table 3 - Monthly Figures for Traffic Accidents	6
Table 4 - Monthly Traffic Accident Trends for the past 13 months	6
Table 5 - Traffic Accidents by Police Divisions - HKI	7
Table 6 - Traffic Accidents by Police Divisions – KE	7
Table 7 - Traffic Accidents by Police Divisions – KW	8
Table 8 - Traffic Accidents by Police Divisions - NTS	8
Table 9 - Traffic Accidents by Police Divisions - NTN	9
Table 10 - Number of Vehicles involved in Traffic Accidents – 2011	10
Table 11 - Number of Vehicles involved in Traffic Accidents – 2012	11
Table 12 - Average Traffic Accidents by Hour of the Day	12
Table 13 - Average Traffic Accidents by Day of the Week	13
Table 14 - Major Driver Contributory Factors of Traffic Accidents	14
Table 15 - Comparison of Major Driver Contributory Factors of Traffic Accidents	14
Table 16 - Bicycle Accidents by Police Regions	15
Table 17 - Comparison of Bicycle Accidents by Police Districts	15
Table 18 - Traffic Accidents on Expressways	16
Table 19 - Major Driver Contributory Factors of Expressway Accidents	17

	<u>Pages</u>
Table 20 - Comparison of Major Driver Contributory Factors of Expressway Accidents	17
Table 21 - Top 20 Traffic Accident Blacksites in 2012 *	18
Table 22 - Traffic Casualties by Police Regions	19
Table 23 - Traffic Casualties Trends from 2008 – 2012	19
Table 24 - Monthly Figures for Traffic Casualties	20
Table 25 - Monthly Traffic Casualties Trends for the past 13 months	20
Table 26 - Traffic Casualties by Class of Road User	21
Table 27 - Comparison of Traffic Casualties by Class of Road User	21
Table 28 - Traffic Casualties by Age Group	22
Table 29 - Comparison of Traffic Casualties by Age Group	22

Part B - Traffic Enforcement Report

Table 30 - Comparison of Traffic Enforcement	23
Table 31 - Comparison of Selective Traffic Enforcement Policy (STEP) Statistics	24
Table 32 - Enforcement Statistics by Police Regions in 2012	25
Table 33 - Complaints against Taxi Related Offences in 2012	26
Table 34 - Prosecutions against Taxi Related Offences in 2012	27
Table 35 - Prosecutions Arising from Traffic Accidents	28
Table 36 - Enforcement Statistics by Police Formations in 2012 - HKI	29
Table 37 - Enforcement Statistics by Police Formations in 2012 - KE	30
Table 38 - Enforcement Statistics by Police Formations in 2012 - KW	31
Table 39 - Enforcement Statistics by Police Formations in 2012 - NTS	32
Table 40 - Enforcement Statistics by Police Formations in 2012 - NTN	33

* Source : Transport Department

Traffic Report 2012

Introduction

This report is comprised of two parts. The first part provides a review on the traffic accidents and casualties in 2012 and the second part details police enforcement action taken in the same period.

2. The objectives of this report are threefold. Firstly, it provides a statistical illustration of the traffic accident and casualty figures and the overall enforcement action during the period under review. Secondly, it enables Regional and District Police management teams to evaluate the effectiveness of their own enforcement action in promoting road safety. Lastly, it avails data for research and analysis of traffic accidents by interested bodies.

Overall Situation

Traffic Accidents

3. When compared with 2011, the total number of traffic accidents involving casualties increased by 353 cases (+2%), from 15 541 cases to 15 894 cases. Fatal accidents registered a decrease of 12 cases (-9%), from 128 cases to 116 cases. [Table 1]

4. Road junctions and pedestrian crossings remained the locations where traffic accidents were most likely to occur. Of the 15 894 accidents, 24% (3 856 cases) occurred at or in the vicinity of road junctions, while 48% (7 688 cases) occurred at or near pedestrian crossings. Drivers' fault accounted for 75% (11 887 cases) of all traffic accidents.

5. In respect of the type of vehicles involved in traffic accidents, 'private car' formed the largest group at 6 859 (28%), followed by 'taxi' at 4 240 (18%), 'goods vehicle' at 3 753 (16%), 'bicycle' at 2 757 (11%), 'motorcycle' at 2 245 (9%) and 'franchised public bus' at 2 195 (9%). However, working on the accident rate per 1 000 licensed vehicles, the most accident prone vehicle type was 'franchised public bus' at 376, followed by 'public light bus' at 246, 'taxi' at 234, 'other public bus' at 71, 'private bus' at 65 and 'motorcycle' at 58. The accident rate for private car was only 15, the lowest among all vehicle classes. [Table 11]

Traffic Casualties

6. When compared with 2011, the total number of traffic casualties increased by 407 persons (+2%), from 19 803 persons to 20 210 persons. Of the 20 210 casualties, 120 persons were killed, representing a decrease of 10 persons (-8%). [Table 22]

7. Regarding the categories of casualties, drivers (including motor-cyclists and cyclists) formed the largest group. There were 9 586 drivers (47%) injured, followed by 6 802 passengers (34%) and 3 822 pedestrians (19%). Pedestrian casualties recorded a higher rate of fatalities and serious injuries than those of other categories of casualties. Elderly pedestrians aged 60 or above remained the most vulnerable group in fatal traffic accidents. There were 9 cyclists killed in 2012, representing a decrease of 53% when compared with 19 cyclists killed in 2011. The increase in cycling related accidents in recent years might be attributed to the increase in cycling activities in general. [Table 26 & Table 28]

Traffic Enforcement

8. Police enforcement action in 2012 continued to focus on reducing traffic accidents and improving traffic flow. When compared with 2011, the overall enforcement figures increased by 15% to 1 471 631. [Table 30]

9. On Drink Driving enforcement, a total of 165 931 drivers were breathalysed, an increase of 1% when compared with 2011. 955 drivers were found to have exceeded the prescribed limits whilst 430 drivers were below the limit, but had consumed some alcohol, a decrease of 71 drivers (-7%) and 62 drivers (-13%) respectively. The 'hit-rate' for drivers over the legal limit dropped encouragingly from 0.63% in 2011 to 0.58% in 2012 and it was evident that random breath testing operations have produced an obvious and positive impact on the attitude of motorists. [Table 31]

10. In 2012, 258 drivers were convicted of various Drink Driving offences. Fines imposed ranged from \$2,000 to \$10,000 with disqualification periods varying from 6 to 60 months. 11 drivers were sentenced to imprisonment, ranging from 14 days to 4 months.

11. Operation Outranger targeting seatbelt offences has been coordinated by Traffic Branch Headquarters (TBHQ) since November 2005. Each operation lasts for 24 hours and focuses on education, publicity and enforcement. Three such operations were performed respectively in February, May and September 2012 with a total of 2 PLB drivers and 616 PLB passengers summonsed.

12. In 2012, Police received 4 105 taxi related complaints from members of the public and 1 504 referrals from the Transport Complaints Unit, making a total of 5 609 reports that required Police investigation, an increase of 6% (336 cases) when compared with 2011. A total of 3 425 prosecutions were instituted against taxi related offences, an increase of 23% (641 cases) when compared with 2011. [Table 33 & Table 34]

13. To address concerns over cycling safety, Operation Goldensun targeting cycling offences has been coordinated by TBHQ since 2003. Five such operations were conducted respectively in January, March, May, September and November 2012 with a total of 3 501 summonses and 1 183 verbal warnings issued to cyclists.

14. In 2012, a total of 2 008 persons were disqualified from driving, representing a decrease of 6% when compared with 2011. The risk of disqualification through accumulating 15 or more demerit points within 24 months remains an effective deterrent to drivers with a bad driving attitude.

15. To more effectively combat drug driving activities, the Road Traffic (Amendment) Bill 2011 was introduced on 13 May 2011 and passed in LegCo on 14 December 2011. The new legislation came into effect on 15 March 2012 and empowers the police to conduct preliminary drugs tests including Drug Influence Recognition Observation (DIRO) and Impairment Test (IT); to obtain specimens of blood and urine for laboratory tests from drivers who are suspected of consuming drugs; and to require a driver to surrender his / her driving licence for a period of 24 hours if he / she fails the IT or refuses to provide specimens of blood and urine for examination.

16. In 2012, there were a total of 55 cases of drug driving, representing an increase of 10 % when compared with 50 cases in 2011. Amongst the 55 cases in 2012, 44 cases were detected after the introduction of new drug driving legislation.

Traffic Branch Headquarters
Hong Kong Police Force
June 2013

Explanatory Notes

Accidents

Each accident figure represents one incident although it may involve more than one vehicle and more than one casualty.

Accident Analysis

The primary or contributory cause of any traffic accident referred to in this report represents the assessment by the police officer investigating the traffic accident.

Accident Blacksite

If nine or more injury accidents, or six or more pedestrian injury accidents occur at a location in the previous 12 month period, the location will be classified as a Traffic Accident Blacksite*. Since 2010 Q1, locations where 2 or more fatal traffic accidents occurred in the previous 5 years, will also be classified as a Traffic Accident Blacksite*.

Fatal Accident

A traffic accident in which one or more persons dies within 30 days of the accident.

Serious Accident

A traffic accident in which one or more persons injured and detained in hospital for more than twelve hours.

Slight Accident

A traffic accident in which all persons involved are either not detained in hospitals or detained for not more than twelve hours.

Fatal Casualty

A person dies within 30 days of the accident.

Serious Casualty

A person injured who is treated in hospital as an 'in-patient' for more than 12 hours. Injuries causing death 30 or more days after the accident are also included in this category.

Slight Casualty

A person with injury of a minor nature such as a sprain, bruise or cut not judged to be severe, or slight shock requiring roadside attention and treatment in hospital is less than 12 hours, or not required.

* Criteria set by the Transport Department

Part A

Traffic Accidents and Casualties for 2012

Table 1 - Traffic Accidents by Police Regions

Region \ Severity	Year		2011				2012				±% change
	Fatal	Serious	Slight	Total	Fatal	Serious	Slight	Total			
Hong Kong Island	23	399	2 619	3 041	21	409	2 575	3 005	-1%		
Kowloon East	20	349	1 756	2 125	31	356	1 834	2 221	+5%		
Kowloon West	30	333	3 033	3 396	18	321	2 935	3 274	-4%		
New Territories South	16	539	2 736	3 291	24	533	2 861	3 418	+4%		
New Territories North	39	570	3 079	3 688	22	766	3 188	3 976	+8%		
Total	128	2 190	13 223	15 541	116 (-9%)	2 385 (+9%)	13 393 (+1%)	15 894 (+2%)	+2%		

Figures in brackets denote the % change compared with last year.

Table 2 - Traffic Accidents Trends from 2008 - 2012

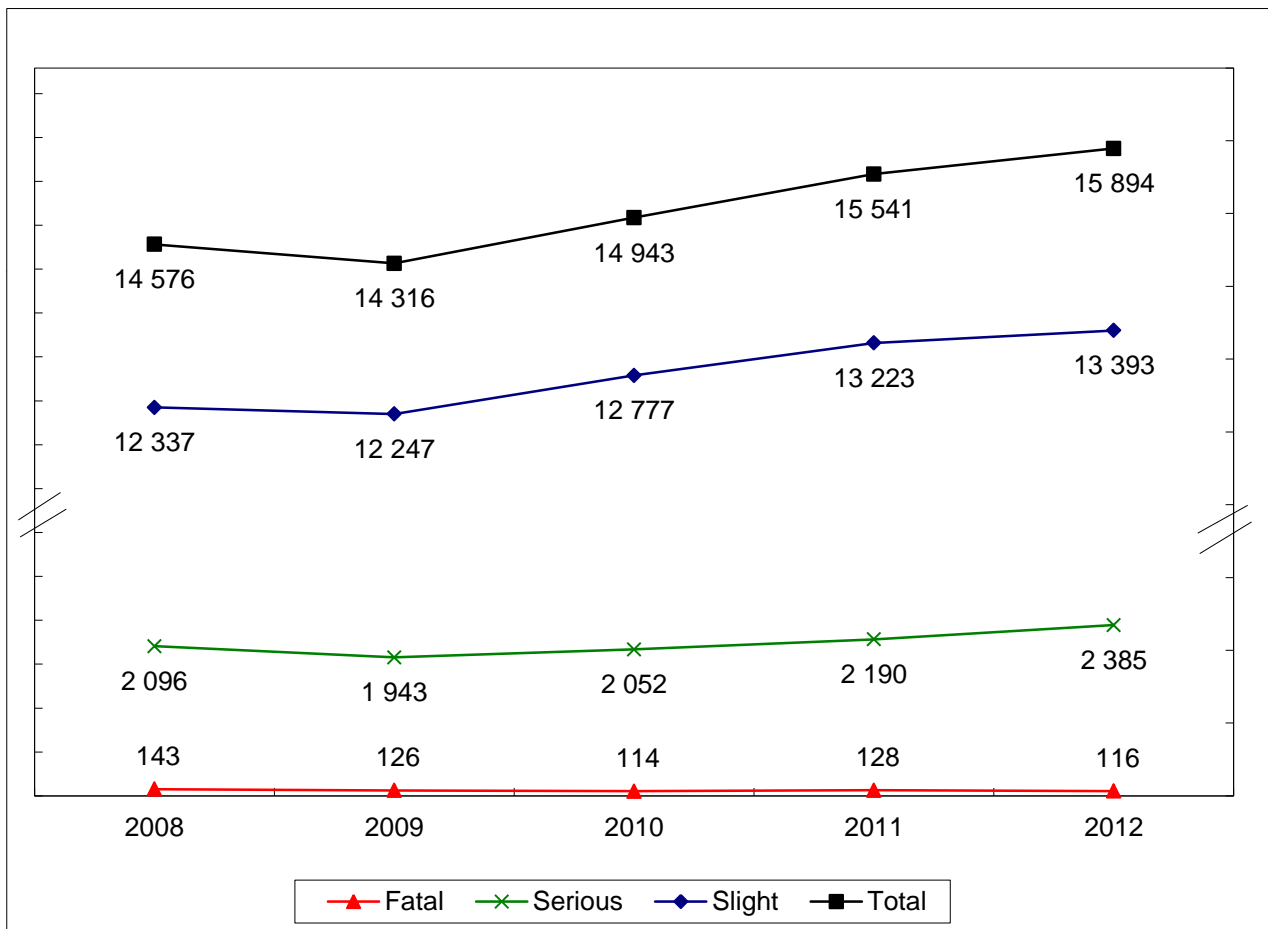


Table 3 - Monthly Figures for Traffic Accidents

Year Month \ Severity	2010				2011				2012				±% change
	Fatal	Serious	Slight	Total	Fatal	Serious	Slight	Total	Fatal	Serious	Slight	Total	
January	10	175	1 107	1 292	8	186	1 044	1 238	13	170	1 086	1 269	+3%
February	12	135	926	1 073	12	157	927	1 096	10	200	989	1 199	+9%
March	11	183	1 029	1 223	13	176	1 077	1 266	9	216	1 115	1 340	+6%
April	12	153	993	1 158	6	190	1 059	1 255	8	200	1 132	1 340	+7%
May	6	176	1 050	1 232	9	167	1 110	1 286	2	199	1 145	1 346	+5%
June	3	174	1 089	1 266	7	156	1 067	1 230	13	178	1 155	1 346	+9%
July	5	186	1 072	1 263	10	201	1 151	1 362	7	211	1 169	1 387	+2%
August	7	172	1 069	1 248	14	171	1 131	1 316	7	195	1 077	1 279	-3%
September	15	183	1 150	1 348	15	217	1 140	1 372	13	202	1 173	1 388	+1%
October	11	185	1 089	1 285	10	222	1 183	1 415	13	233	1 157	1 403	-0.8%
November	11	176	1 074	1 261	11	187	1 171	1 369	12	187	1 102	1 301	-5%
December	11	154	1 129	1 294	13	160	1 163	1 336	9	194	1 093	1 296	-3%
Total	114	2 052	12 777	14 943	128	2 190	13 223	15 541	116	2 385	13 393	15 894	+2%

Table 4 - Monthly Traffic Accident Trends for the past 13 months

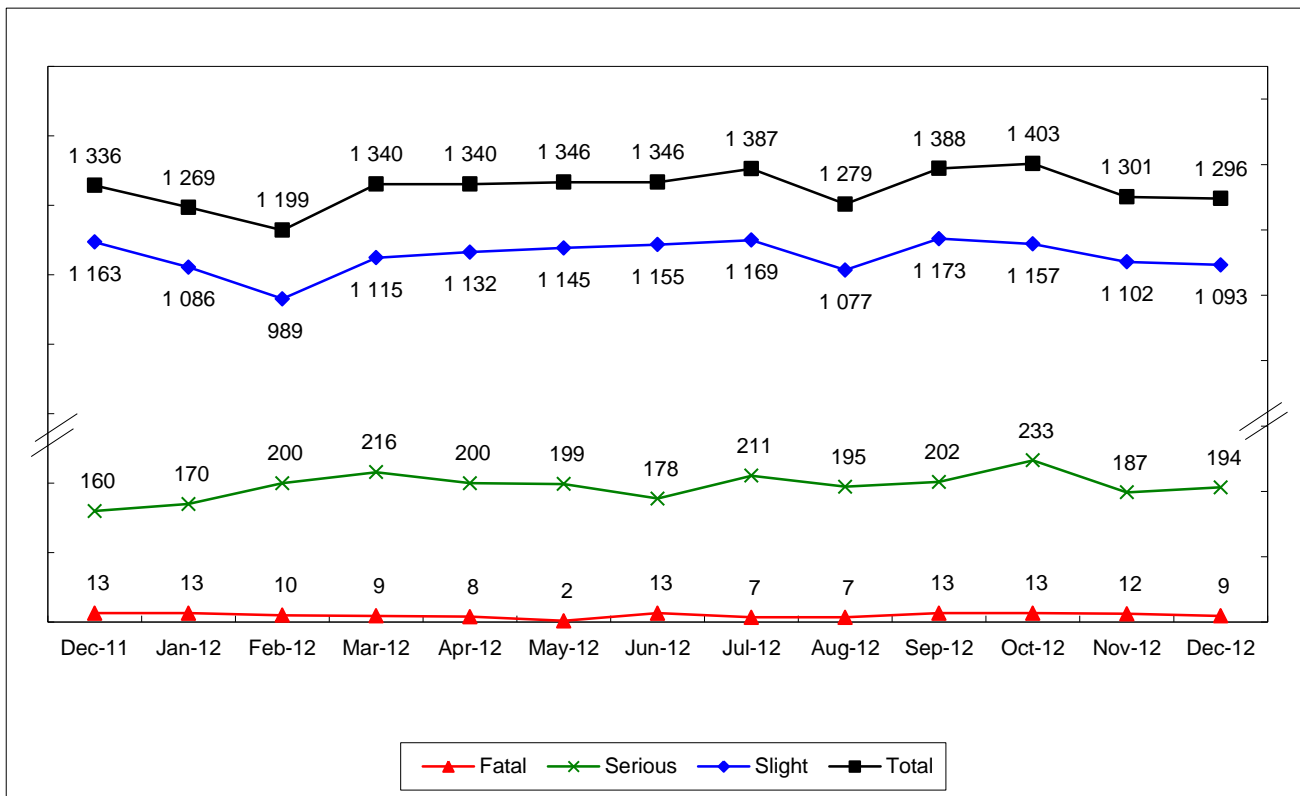


Table 5 - Traffic Accidents by Police Divisions - HKI

Division \ Severity	Year		2011				2012				±% change
	Fatal	Serious	Slight	Total	Fatal	Serious	Slight	Total			
Central	3	51	439	493	0	36	434	470	-5%		
Peak	2	1	24	27	0	3	21	24	-11%		
Western	1	34	278	313	6	49	245	300	-4%		
Aberdeen	2	52	358	412	1	53	361	415	+0.7%		
Stanley	0	8	54	62	0	10	59	69	+11%		
Happy Valley	2	26	178	206	3	25	192	220	+7%		
Wanchai	5	68	605	678	3	74	550	627	-8%		
North Point	2	56	344	402	4	59	327	390	-3%		
Chai Wan	6	97	337	440	4	93	377	474	+8%		
Cheung Chau *	0	6	2	8	0	7	9	16	+100%		
Total	23	399	2 619	3 041	21	409	2 575	3 005	-1%		

* Traffic accidents on Islands less Lantau District are included in Hong Kong Island Police Region.

Table 6 - Traffic Accidents by Police Divisions - KE

Division \ Severity	Year		2011				2012				±% change
	Fatal	Serious	Slight	Total	Fatal	Serious	Slight	Total			
Wong Tai Sin	3	96	485	584	12	77	501	590	+1%		
Sai Kung	0	36	109	145	3	32	128	163	+12%		
Kwun Tong	9	74	418	501	6	77	418	501	0%		
Tseung Kwan O	3	65	303	371	2	92	329	423	+14%		
Ngau Tau Kok	2	40	243	285	2	44	255	301	+6%		
Sau Mau Ping	3	38	198	239	6	34	203	243	+2%		
Total	20	349	1 756	2 125	31	356	1 834	2 221	+5%		

Table 7 - Traffic Accidents by Police Divisions - KW

Year		2011				2012				±% change
Division	Severity	Fatal	Serious	Slight	Total	Fatal	Serious	Slight	Total	
Yau Ma Tei		7	44	484	535	3	42	459	504	-6%
Tsim Sha Tsui		2	12	280	294	0	20	256	276	-6%
Mong Kok		7	72	588	667	4	58	532	594	-11%
Sham Shui Po		1	45	287	333	2	41	299	342	+3%
Cheung Sha Wan		6	66	496	568	2	65	472	539	-5%
Kowloon City		4	52	500	556	5	51	521	577	+4%
Hung Hom		3	42	398	443	2	44	396	442	-0.2%
Total		30	333	3 033	3 396	18	321	2 935	3 274	-4%

Table 8 - Traffic Accidents by Police Divisions - NTS

Year		2011				2012				±% change
Division	Severity	Fatal	Serious	Slight	Total	Fatal	Serious	Slight	Total	
Tsuen Wan		7	165	662	834	2	142	623	767	-8%
Kwai Chung		1	63	305	369	1	49	293	343	-7%
Tsing Yi		1	69	341	411	4	73	388	465	+13%
Shatin		3	72	434	509	4	87	477	568	+12%
Tin Sum		2	45	261	308	4	46	325	375	+22%
Ma On Shan		1	73	428	502	3	67	455	525	+5%
Lantau North		1	33	186	220	5	35	169	209	-5%
Lantau South		0	8	21	29	0	15	26	41	+41%
Airport		0	11	98	109	1	19	105	125	+15%
Total		16	539	2 736	3 291	24	533	2 861	3 418	+4%

Table 9 - Traffic Accidents by Police Divisions - NTN

Division	Year Severity	2011				2012				±% change
		Fatal	Serious	Slight	Total	Fatal	Serious	Slight	Total	
Tuen Mun		5	58	257	320	1	65	298	364	+14%
Castle Peak		5	66	346	417	5	88	327	420	+0.7%
Tin Shui Wai		1	52	247	300	1	64	242	307	+2%
Yuen Long		8	118	564	690	3	141	566	710	+3%
Pat Heung		5	62	169	236	2	70	187	259	+10%
Tai Po		7	127	875	1 009	8	203	936	1 147	+14%
Sheung Shui		7	60	470	537	1	102	473	576	+7%
Lok Ma Chau		1	18	109	128	1	22	104	127	-0.8%
Ta Kwu Ling		0	2	19	21	0	6	20	26	+24%
Sha Tau Kok		0	7	23	30	0	5	35	40	+33%
Total		39	570	3 079	3 688	22	766	3 188	3 976	+8%

Table 10 - Number of Vehicles Involved in Traffic Accidents - 2011

Region	Severity	Motorcycle	Private Car	Private Light Bus	Public Light Bus (N.B. 1)	Goods Vehicle	Private Bus	Franchised Public Bus (N.B. 2)	Other Public Buses (N.B. 3)	Taxi	Tram	Bicycle	Handcart	Other Vehicles (N.B. 4)	Light Rail Transit	Total
Hong Kong Island	Fatal	0	4	0	2	7	0	4	1	5	1	1	0	1	0	26
	Serious	79	121	1	27	68	1	70	16	130	8	19	0	8	0	548
	Slight	416	1 110	22	184	467	0	568	66	979	50	43	6	26	0	3 937
	Total	495	1 235	23	213	542	1	642	83	1 114	59	63	6	35	0	4 511
Kowloon East	Fatal	3	2	0	4	7	0	4	0	1	0	2	0	0	0	23
	Serious	87	135	3	26	94	0	41	3	72	0	26	2	7	0	496
	Slight	392	848	18	218	528	0	257	55	502	0	52	2	22	0	2 894
	Total	482	985	21	248	629	0	302	58	575	0	80	4	29	0	3 413
Kowloon West	Fatal	0	4	0	2	17	1	2	2	5	0	3	0	0	0	36
	Serious	57	102	0	35	63	0	53	10	95	0	10	0	4	0	429
	Slight	460	1 508	17	225	734	8	533	81	1 168	0	93	12	35	0	4 874
	Total	517	1 614	17	262	814	9	588	93	1 268	0	106	12	39	0	5 339
NT South	Fatal	3	3	0	6	5	0	2	1	0	0	2	0	0	0	22
	Serious	95	157	4	43	162	1	48	15	103	0	119	1	20	0	768
	Slight	355	1 021	13	181	767	7	323	102	552	0	753	2	65	0	4 141
	Total	453	1 181	17	230	934	8	373	118	655	0	874	3	85	0	4 931
NT North	Fatal	5	11	0	4	20	0	3	3	8	0	12	0	2	1	69
	Serious	94	206	2	30	150	0	39	18	94	0	180	1	7	3	824
	Slight	282	1 359	11	155	744	4	190	119	545	0	1 185	3	42	7	4 646
	Total	381	1 576	13	189	914	4	232	140	647	0	1 377	4	51	11	5 539
Total	Fatal	11	24	0	18	56	1	15	7	19	1	20	0	3	1	176
	Serious	412	721	10	161	537	2	251	62	494	8	354	4	46	3	3 065
	Slight	1 905	5 846	81	963	3 240	19	1 871	423	3 746	50	2 126	25	190	7	20 492
	Total	2 328	6 591	91	1 142	3 833	22	2 137	492	4 259	59	2 500	29	239	11	23 733
% share		10%	28%	0.4%	5%	16%	0.1%	9%	2%	18%	0.2%	11%	0.1%	1%	0.05%	100%
Accident rate per 1 000 licensed vehicles		61	16	43	263	34	45	372	70	235	← N.A. →					34

N.B.

1. : Including franchised mini bus
2. : Kowloon Motor Bus, Franchised City Bus, New Lantau Bus, New World First Bus, Long Win Bus and unconfirmed franchised bus.
3. : Other Public Buses' include non-franchised Public Bus and MTR Bus.
4. : Other vehicles' include trailer, village vehicle, unknown vehicle and other vehicles.

Table 11 - Number of Vehicles involved in Traffic Accidents - 2012

Region	Severity	Motorcycle	Private Car	Private Light Bus	Public Light Bus (N.B. 1)	Goods Vehicle	Private Bus	Franchised Public Bus (N.B. 2)	Other Public Buses (N.B. 3)	Taxi	Tram	Bicycle	Handcart	Other Vehicles (N.B. 4)	Light Rail Transit	Total
Hong Kong Island	Fatal	2	7	0	1	9	0	3	0	4	2	1	2	0	0	31
	Serious	71	123	4	31	69	0	84	12	94	7	30	0	10	0	535
	Slight	425	1 096	18	169	433	5	525	99	942	35	64	3	45	0	3 859
	Total	498	1 226	22	201	511	5	612	111	1 040	44	95	5	55	0	4 425
Kowloon East	Fatal	5	8	0	5	10	0	1	1	9	0	0	0	0	0	39
	Serious	93	112	3	49	73	1	41	8	75	0	36	2	6	0	499
	Slight	374	874	14	189	498	3	253	58	534	0	84	2	21	0	2 904
	Total	472	994	17	243	581	4	295	67	618	0	120	4	27	0	3 442
Kowloon West	Fatal	2	1	0	3	10	0	2	1	0	0	2	0	0	0	21
	Serious	69	109	2	22	67	2	42	7	104	0	14	3	6	0	447
	Slight	416	1 560	20	164	688	4	542	96	1 112	0	70	12	43	0	4 727
	Total	487	1 670	22	189	765	6	586	104	1 216	0	86	15	49	0	5 195
NT South	Fatal	6	4	0	4	9	0	1	2	6	0	3	0	1	0	36
	Serious	95	160	1	34	159	3	60	15	105	0	123	1	24	0	780
	Slight	319	1 114	16	181	713	11	368	89	590	0	793	2	80	0	4 276
	Total	420	1 278	17	219	881	14	429	106	701	0	919	3	105	0	5 092
NT North	Fatal	1	10	0	4	10	0	2	0	2	0	3	0	1	0	33
	Serious	100	202	1	37	179	1	41	16	112	0	341	1	13	7	1 051
	Slight	267	1 479	9	174	826	5	230	94	551	0	1 193	3	49	6	4 886
	Total	368	1 691	10	215	1 015	6	273	110	665	0	1 537	4	63	13	5 970
Total	Fatal	16	30	0	17	48	0	9	4	21	2	9	2	2	0	160
	Serious	428	706	11	173	547	7	268	58	490	7	544	7	59	7	3 312
	Slight	1 801	6 123	77	877	3 158	28	1 918	436	3 729	35	2 204	22	238	6	20 652
	Total	2 245	6 859	88	1 067	3 753	35	2 195	498	4 240	44	2 757	31	299	13	24 124
% share		9%	28%	0.4%	4%	16%	0.1%	9%	2%	18%	0.2%	11%	0.1%	1%	0.05%	100%
Accident rate per 1 000 licensed vehicles		58	15	39	246	33	65	376	71	234	← N.A. →					34

N.B.

1. : Including franchised mini bus
2. : Kowloon Motor Bus, Franchised City Bus, New Lantau Bus, New World First Bus, Long Win Bus and unconfirmed franchised bus.
3. : Other Public Buses' include non-franchised Public Bus and MTR Bus.
4. : Other vehicles' include trailer, village vehicle, unknown vehicle and other vehicles.

Table 12 - Average Traffic Accidents by Hour of the Day

Hour	Region	2011					2012					±% change		
		HKI	KE	KW	NTS	NTN	Total	HKI	KE	KW	NTS		NTN	Total
0001-0100		0.15	0.11	0.32	0.24	0.24	1.05	0.18	0.19	0.22	0.25	0.26	1.10	+5%
0101-0200		0.09	0.13	0.14	0.15	0.19	0.70	0.08	0.08	0.20	0.17	0.14	0.66	-6%
0201-0300		0.09	0.07	0.13	0.13	0.12	0.54	0.08	0.06	0.14	0.12	0.13	0.52	-4%
0301-0400		0.08	0.04	0.15	0.11	0.13	0.51	0.07	0.07	0.14	0.10	0.11	0.49	-4%
0401-0500		0.06	0.04	0.11	0.08	0.09	0.38	0.06	0.05	0.08	0.07	0.10	0.36	-5%
0501-0600		0.08	0.06	0.16	0.09	0.10	0.49	0.10	0.06	0.12	0.08	0.11	0.48	-2%
0601-0700		0.13	0.10	0.19	0.16	0.14	0.72	0.10	0.10	0.12	0.22	0.14	0.67	-7%
0701-0800		0.34	0.26	0.31	0.39	0.40	1.71	0.32	0.27	0.35	0.40	0.46	1.80	+5%
0801-0900		0.47	0.49	0.47	0.48	0.51	2.43	0.46	0.43	0.49	0.48	0.43	2.30	-5%
0901-1000		0.45	0.37	0.48	0.41	0.44	2.15	0.45	0.40	0.44	0.46	0.49	2.25	+5%
1001-1100		0.47	0.26	0.49	0.48	0.50	2.20	0.43	0.31	0.39	0.41	0.50	2.04	-7%
1101-1200		0.59	0.26	0.50	0.47	0.52	2.33	0.49	0.31	0.42	0.49	0.57	2.28	-2%
1201-1300		0.53	0.27	0.49	0.50	0.57	2.36	0.51	0.33	0.50	0.54	0.60	2.48	+5%
1301-1400		0.60	0.30	0.53	0.52	0.59	2.54	0.49	0.33	0.46	0.56	0.70	2.55	+0.4%
1401-1500		0.50	0.33	0.53	0.62	0.56	2.55	0.47	0.34	0.51	0.64	0.73	2.69	+5%
1501-1600		0.58	0.33	0.55	0.60	0.72	2.78	0.54	0.33	0.64	0.69	0.85	3.05	+10%
1601-1700		0.56	0.31	0.59	0.64	0.77	2.87	0.54	0.37	0.58	0.66	0.91	3.05	+6%
1701-1800		0.44	0.45	0.53	0.61	0.81	2.84	0.55	0.42	0.63	0.63	0.88	3.11	+10%
1801-1900		0.53	0.47	0.62	0.68	0.72	3.02	0.57	0.40	0.61	0.63	0.71	2.92	-3%
1901-2000		0.48	0.32	0.56	0.38	0.52	2.26	0.46	0.37	0.54	0.44	0.52	2.34	+4%
2001-2100		0.35	0.19	0.39	0.35	0.33	1.61	0.35	0.22	0.38	0.36	0.37	1.68	+4%
2101-2200		0.32	0.21	0.33	0.35	0.43	1.65	0.34	0.19	0.36	0.33	0.39	1.60	-3%
2201-2300		0.25	0.26	0.39	0.33	0.40	1.63	0.32	0.27	0.33	0.34	0.35	1.60	-2%
2301-2400		0.18	0.20	0.35	0.26	0.29	1.27	0.27	0.18	0.30	0.27	0.40	1.42	+12%

Table 13 - Average Traffic Accidents by Day of the Week

Year		2011					2012					±% change		
Day	Region	HKI	KE	KW	NTS	NTN	Total	HKI	KE	KW	NTS		NTN	Total
	Sun	7.06	4.83	8.44	10.42	11.98	42.73	7.66	5.40	8.32	9.98	13.87	45.23	+6%
	Mon	8.31	5.40	8.81	8.71	9.62	40.85	8.00	6.34	9.15	8.72	9.58	41.79	+2%
	Tue	8.40	6.75	8.52	8.27	8.81	40.75	8.08	6.06	8.27	9.31	10.25	41.96	+3%
	Wed	7.94	5.87	9.17	8.17	9.13	40.29	7.88	5.81	8.67	8.87	10.06	41.29	+2%
	Thu	8.81	5.83	9.52	8.54	8.63	41.33	8.79	5.69	8.40	9.04	9.52	41.44	+0.3%
	Fri	9.27	5.83	10.12	8.92	10.15	44.29	8.94	6.56	9.00	8.81	9.75	43.06	-3%
	Sat	8.53	6.25	10.53	10.06	12.36	47.72	8.13	6.63	10.81	10.65	12.98	49.21	+3%

Table 14 - Major Driver Contributory Factors of Accidents

Factors	2011	2012	±% change
1. Driving inattentively	3 487 (3 369)	3 125 (3 050)	-10% -9%
2. Losing control of vehicle	1 329 (1 320)	1 625 (1 615)	+22% +22%
3. Driving too close to vehicle in front	1 567 (1 350)	1 372 (1 301)	-12% -4%
4. Careless lane changing	995 (978)	1 087 (1 071)	+9% +10%
5. Careless cycling	900 (891)	800 (786)	-11% -12%
6. Improper or illegal turn	619 (615)	689 (678)	+11% +10%
7. Reversing negligently	304 (304)	362 (361)	+19% +19%
8. Failing to ensure the safety of passenger	246 (246)	220 (220)	-11% -11%
9. Disobeying traffic signal	192 (185)	210 (201)	+9% +9%
10. Starting negligently	203 (203)	203 (203)	0% 0%

Figures on top are the number of drivers and figures in brackets denote the number of traffic accidents involved.

Table 15 - Comparison of Major Driver Contributory Factors of Accidents

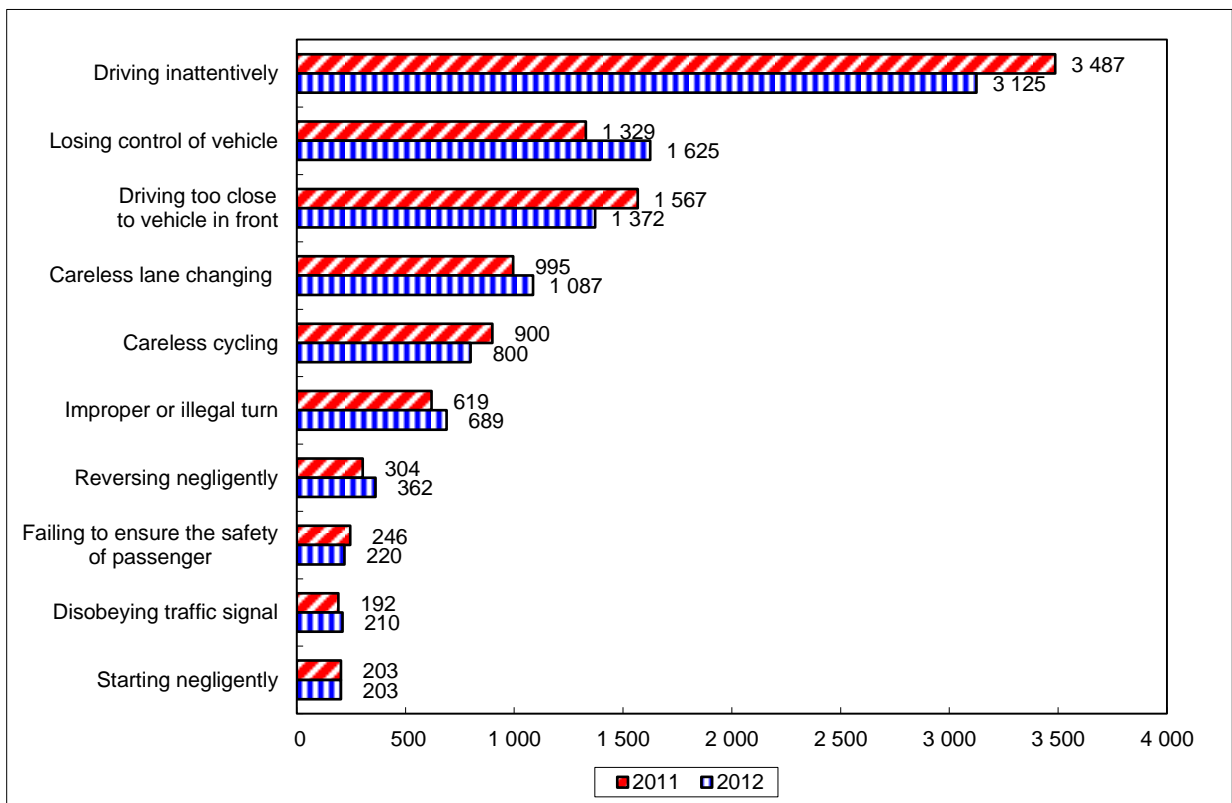


Table 16 - Bicycle Accidents by Police Regions

Year	2011									2012									±% change
	On Cycle track				On Road				Grand Total	On Cycle track				On Road				Grand Total	
	Fatal	Serious	Slight	Total	Fatal	Serious	Slight	Total		Fatal	Serious	Slight	Total	Fatal	Serious	Slight	Total		
HKI	0	0	0	0	1	16	43	60	60	0	1	2	3	1	24	58	83	86	+43%
KE	0	3	7	10	2	20	40	62	72	0	4	16	20	0	29	61	90	110	+53%
KW	0	0	1	1	3	10	87	100	101	0	1	7	8	2	12	63	77	85	-16%
NTS	0	32	270	302	2	78	439	519	821	1	53	425	479	2	62	324	388	867	+6%
NTN	0	34	298	332	12	133	817	962	1 294	1	116	439	556	2	206	670	878	1 434	+11%
Total	0	69	576	645	20	257	1 426	1 703	2 348	2	175	889	1 066	7	333	1 176	1 516	2 582	+10%

Table 17 - Comparison of Bicycle Accidents by Police Districts

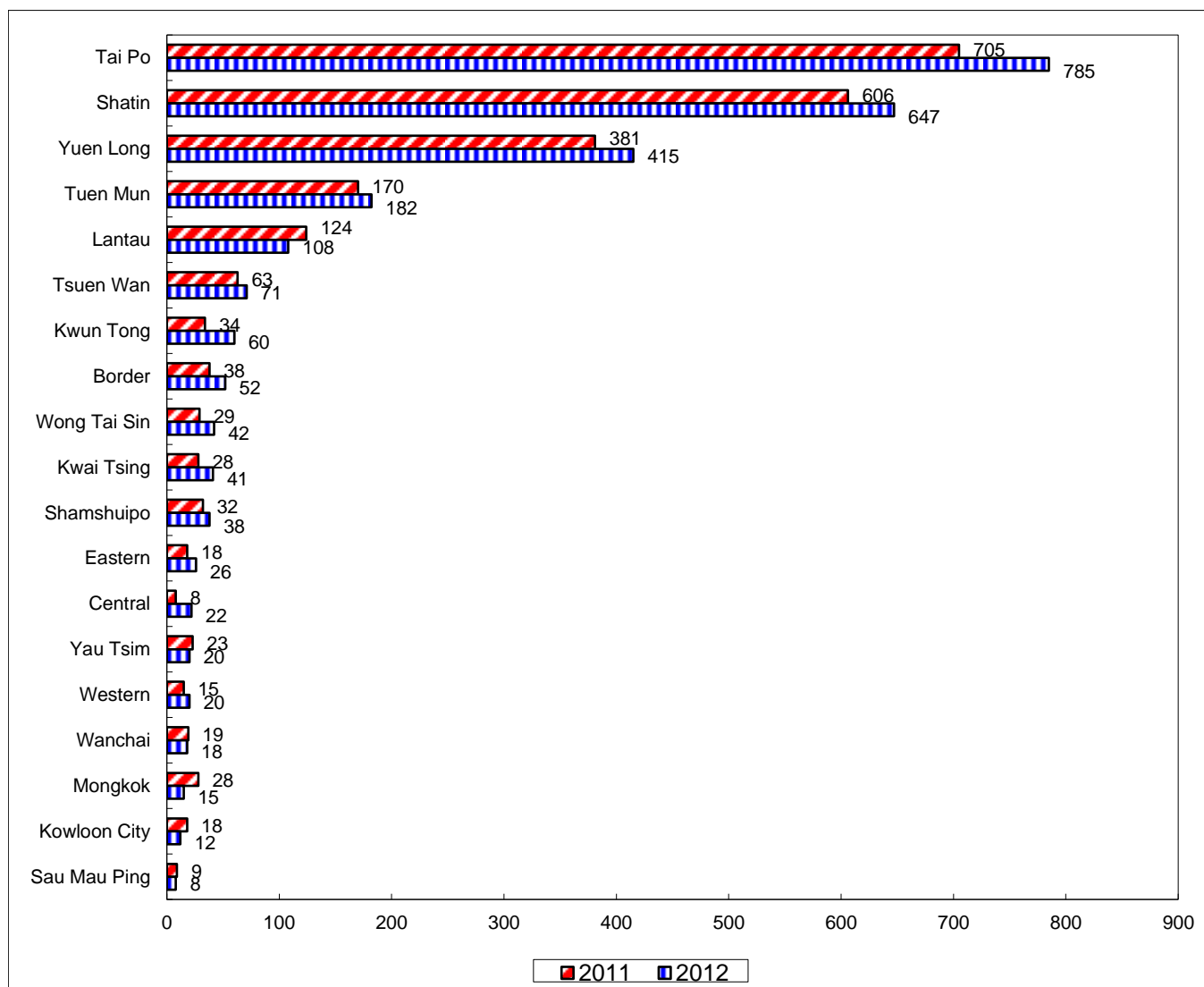


Table 18 - Traffic Accidents on Expressways

Expressway	2011				2012				±% change
	Fatal	Serious	Slight	Total	Fatal	Serious	Slight	Total	
Sha Tin Road	0	1	5	6	0	4	10	14	+133%
Tolo Highway	2	23	118	143	2	19	115	136	-5%
Fanling Highway	0	10	70	80	2	15	66	83	+4%
San Tin Highway	0	5	23	28	2	3	22	27	-4%
Yuen Long Highway	3	9	34	46	1	7	55	63	+37%
Tuen Mun Road	1	38	206	245	2	44	185	231	-6%
Tsuen Wan Road	0	8	41	49	1	8	52	61	+24%
Tai Po Road - Sha Tin *	0	4	12	16	0	1	12	13	-19%
Tate's Cairn Highway	1	1	13	15	0	7	30	37	+147%
Kwun Tong Bypass	0	14	43	57	1	5	49	55	-4%
Island Eastern Corridor	0	13	80	93	0	14	103	117	+26%
North Lantau Highway	0	11	39	50	1	16	56	73	+46%
Tsing Kwai Highway	0	2	24	26	1	4	25	30	+15%
West Kowloon Expressway	1	2	22	25	0	3	18	21	-16%
Cheung Tsing Highway	0	1	11	12	0	4	13	17	+42%
Tsing Long Highway	0	8	27	35	0	8	39	47	+34%
Total	8	150	768	926	13	162	850	1 025	+11%

* Section between Sha Tin Racecourse and HK Institute of Vocational Ed. (VTC) - Sha Tin.

Table 19 - Major Driver Contributory Factors of Expressway Accidents

Factors	2011	2012	±% change
1. Driving too close to vehicle in front	241 (210)	256 (216)	+6% +3%
2. Driving inattentively	269 (243)	255 (232)	-5% -5%
3. Careless lane changing	130 (126)	153 (150)	+18% +19%
4. Losing control of vehicle	82 (82)	66 (65)	-20% -21%
5. Driving too close to vehicle alongside	5 (4)	9 (9)	+80% +125%
6. Speeding	3 (3)	8 (7)	+167% +133%
7. Consumption of alcohol	9 (9)	7 (7)	-22% -22%
8. Asleep or drowsy	14 (14)	7 (7)	-50% -50%
9. Driving too close to kerb	6 (6)	6 (5)	0% -17%
10. Emerging from side road negligently	7 (7)	5 (5)	-29% -29%

Figures on top are the number of drivers and figures in brackets denote the number of traffic accidents involved.

Table 20 - Comparison of Major Driver Contributory Factors of Expressway Accidents

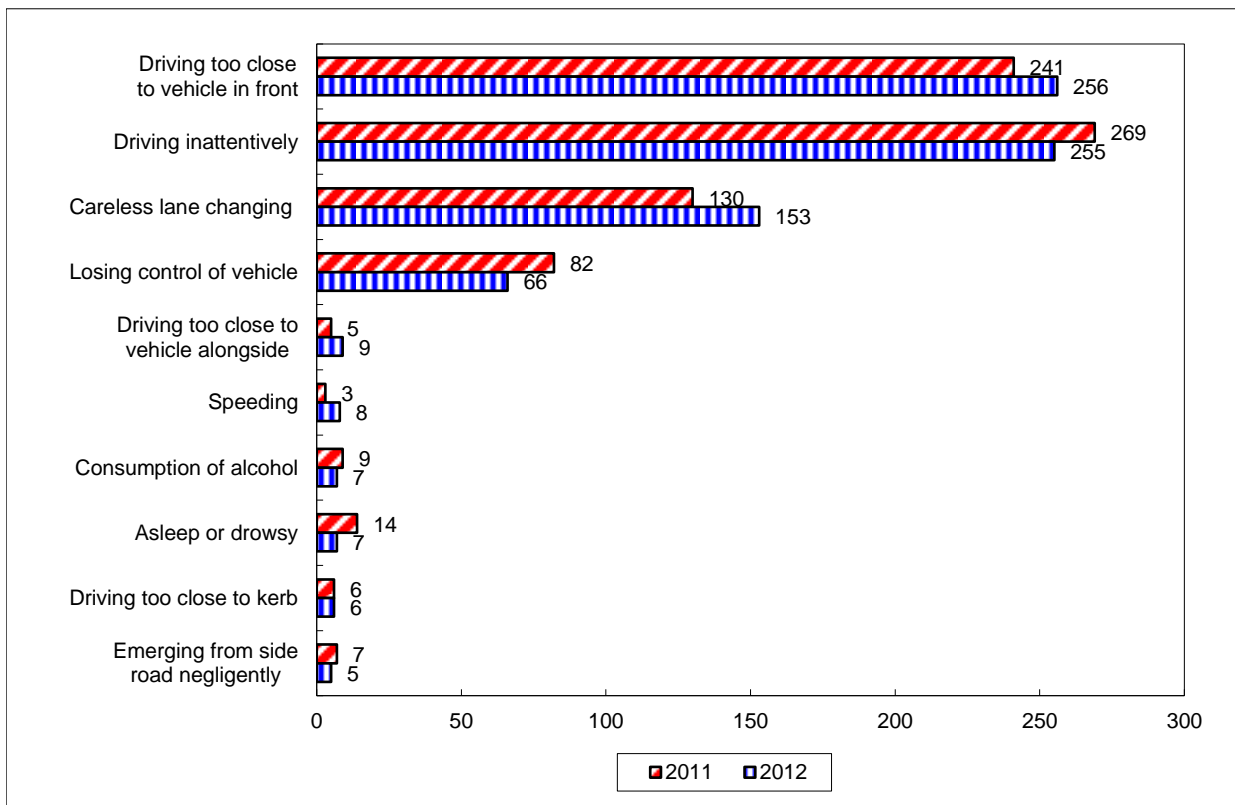


Table 21 - Top 20 Traffic Accident Blacksites in 2012*

No.	Location	Number of Traffic Accidents	Police Region
1	Tsuen Tsing Interchange / Tsuen Wan Road	23	New Territories South
2	Ma Tau Chung Road / Sung Wong Toi Road / Fu Ning Street	19	Kowloon West
3	Nathan Road / Mong Kok Road	18	Kowloon West
4	Nathan Road / Argyle Street	17	Kowloon West
5	Nathan Road / Dundas Street	16	Kowloon West
6	King's Road / Tong Shui Road	15	Hong Kong Island
7	Cheung Sha Wan Road / Yen Chow Street	14	Kowloon West
8	Argyle Street / Sai Yee Street	14	Kowloon West
9	Gascoigne Road / Chatham Road South	14	Kowloon West
10	Nathan Road / Waterloo Road	14	Kowloon West
11	Chatham Road South / Austin Road / Cheong Wan Road	13	Kowloon West
12	Nathan Road / Jordan Road	12	Kowloon West
13	Leighton Road / Wong Nai Chung Road / Matheson Street	12	Hong Kong Island
14	Lei Yue Mun Road / Cha Kwo Ling Road	12	Kowloon East
15	Nathan Road / Gascoigne Road / Kansu Street	12	Kowloon West
16	Pei Ho Street / Ki Lung Street	12	Kowloon West
17	Nathan Road / Austin Road	12	Kowloon West
18	Waterloo Road / Argyle Steet / Princess Margaret Road	12	Kowloon West
19	Argyles Street / Tong Mi Road / Cherry Street	11	Kowloon West
20	Ma Tau Wai Road / Chi Kiang Street	11	Kowloon West

* Source: Transport Department

Table 22 - Traffic Casualties by Police Regions

Region \ Severity	2011				2012				±% change
	Fatal	Serious	Slight	Total	Fatal	Serious	Slight	Total	
Hong Kong Island	23	413	3 275	3 711	23	443	3 282	3 748	+1%
Kowloon East	20	375	2 422	2 817	31	381	2 497	2 909	+3%
Kowloon West	30	347	3 835	4 212	19	330	3 670	4 019	-5%
New Territories South	16	579	3 749	4 344	24	566	3 862	4 452	+2%
New Territories North	41	612	4 066	4 719	23	801	4 258	5 082	+8%
Total	130	2 326	17 347	19 803	120 (-8%)	2 521 (+8%)	17 569 (+1%)	20 210 (+2%)	+2%

Figures in brackets denote the % change compared with last year.

Table 23 - Traffic Casualties Trends from 2008-2012

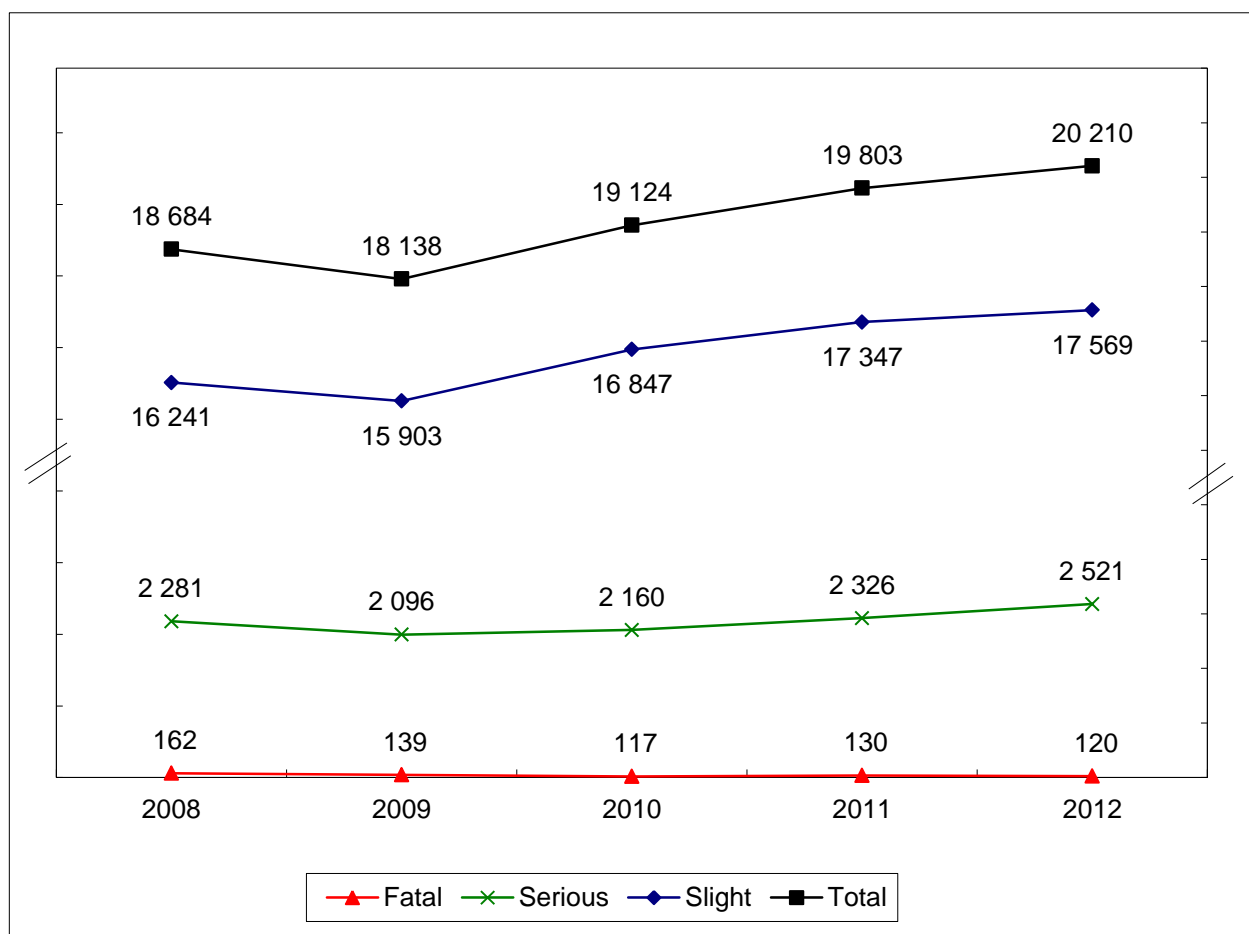


Table 24 - Monthly Figures for Traffic Casualties

Year \ Month	2010				2011				2012				±% change
	Fatal	Serious	Slight	Total	Fatal	Serious	Slight	Total	Fatal	Serious	Slight	Total	
January	10	185	1 421	1 616	8	193	1 341	1 542	13	177	1 449	1 639	+6%
February	13	146	1 245	1 404	12	161	1 214	1 387	10	213	1 282	1 505	+9%
March	11	191	1 385	1 587	13	194	1 387	1 594	9	236	1 529	1 774	+11%
April	12	157	1 306	1 475	6	200	1 392	1 598	9	217	1 547	1 773	+11%
May	6	185	1 452	1 643	9	180	1 438	1 627	2	209	1 469	1 680	+3%
June	4	181	1 442	1 627	7	165	1 473	1 645	13	191	1 557	1 761	+7%
July	5	198	1 381	1 584	10	221	1 494	1 725	7	218	1 569	1 794	+4%
August	7	184	1 471	1 662	14	174	1 458	1 646	7	203	1 335	1 545	-6%
September	15	194	1 508	1 717	15	232	1 554	1 801	13	216	1 502	1 731	-4%
October	12	196	1 383	1 591	10	234	1 591	1 835	13	238	1 457	1 708	-7%
November	11	182	1 369	1 562	11	194	1 520	1 725	14	204	1 446	1 664	-4%
December	11	161	1 484	1 656	15	178	1 485	1 678	10	199	1 427	1 636	-3%
Total	117	2 160	16 847	19 124	130	2 326	17 347	19 803	120	2 521	17 569	20 210	+2%

Table 25 - Monthly Traffic Casualties Trends for the past 13 months

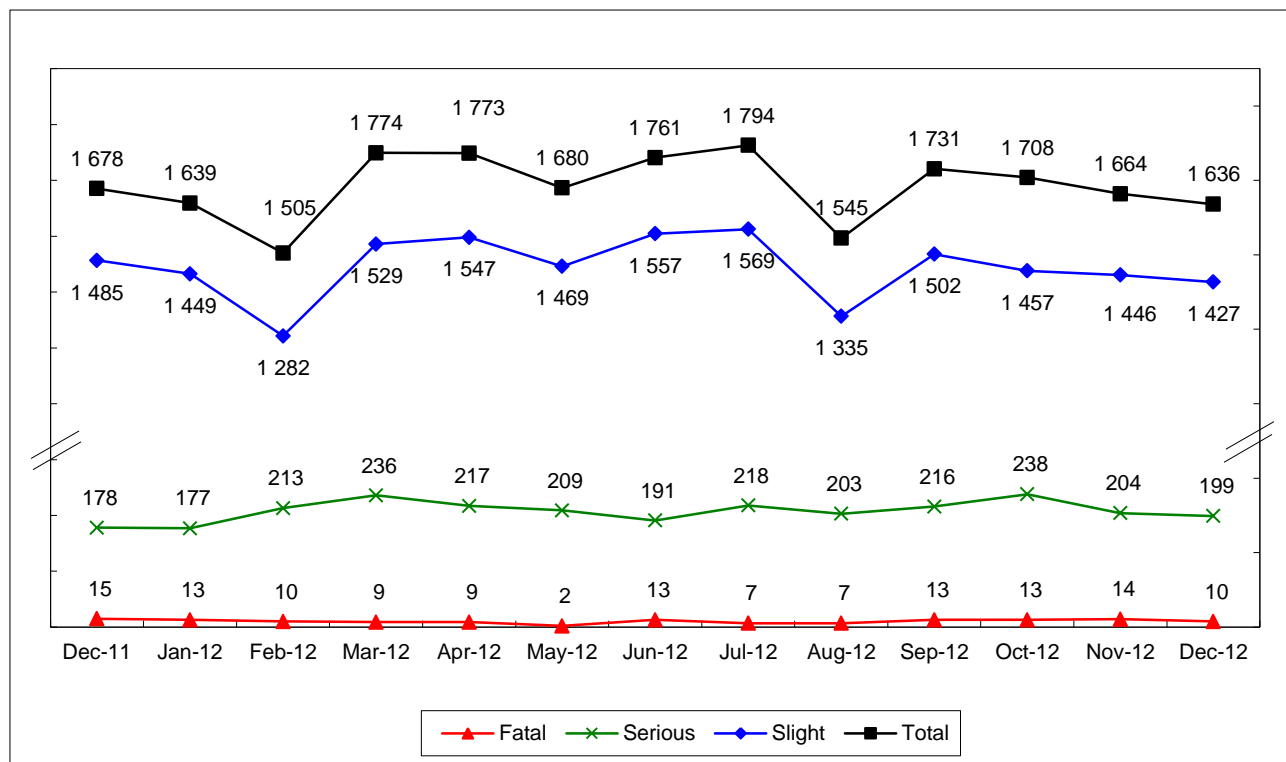


Table 26 - Traffic Casualties by Class of Road User

Year Severity Class	2011						2012						±% change
	Fatal	% share	Serious	Slight	Total	% share	Fatal	% share	Serious	Slight	Total	% share	
Driver	17	13%	417	4 577	5 011	25%	15	13%	423	4 634	5 072	25%	+1%
Motor-cyclist	11	8%	353	1 782	2 146	11%	11	9%	385	1 676	2 072	10%	-3%
Cyclist	19	15%	303	1 872	2 194	11%	9	8%	485	1 948	2 442	12%	+11%
Pedestrian	72	55%	791	2 977	3 840	19%	71	59%	771	2 980	3 822	19%	-0.5%
Passenger	11	8%	462	6 139	6 612	33%	14	12%	457	6 331	6 802	34%	+3%
Total	130		2 326	17 347	19 803		120		2 521	17 569	20 210		+2%

Table 27 - Comparison of Traffic Casualties by Class of Road User

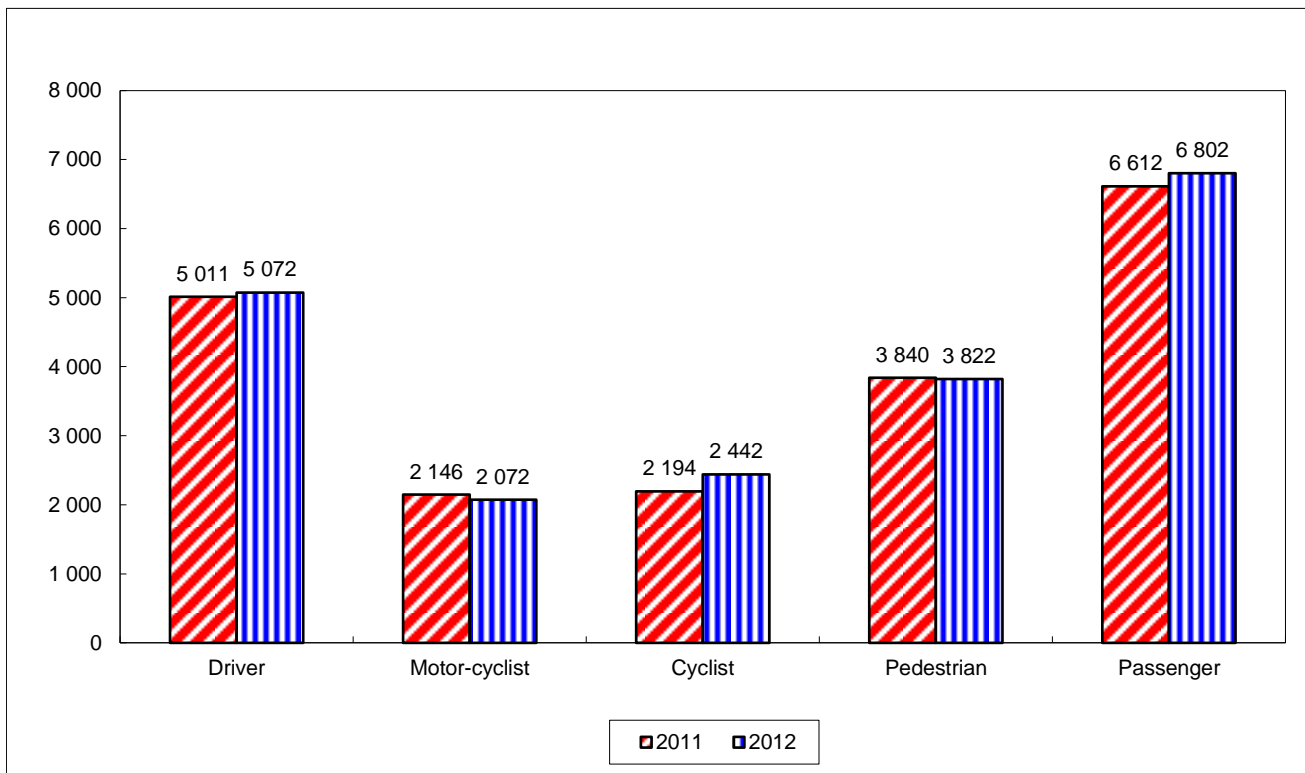
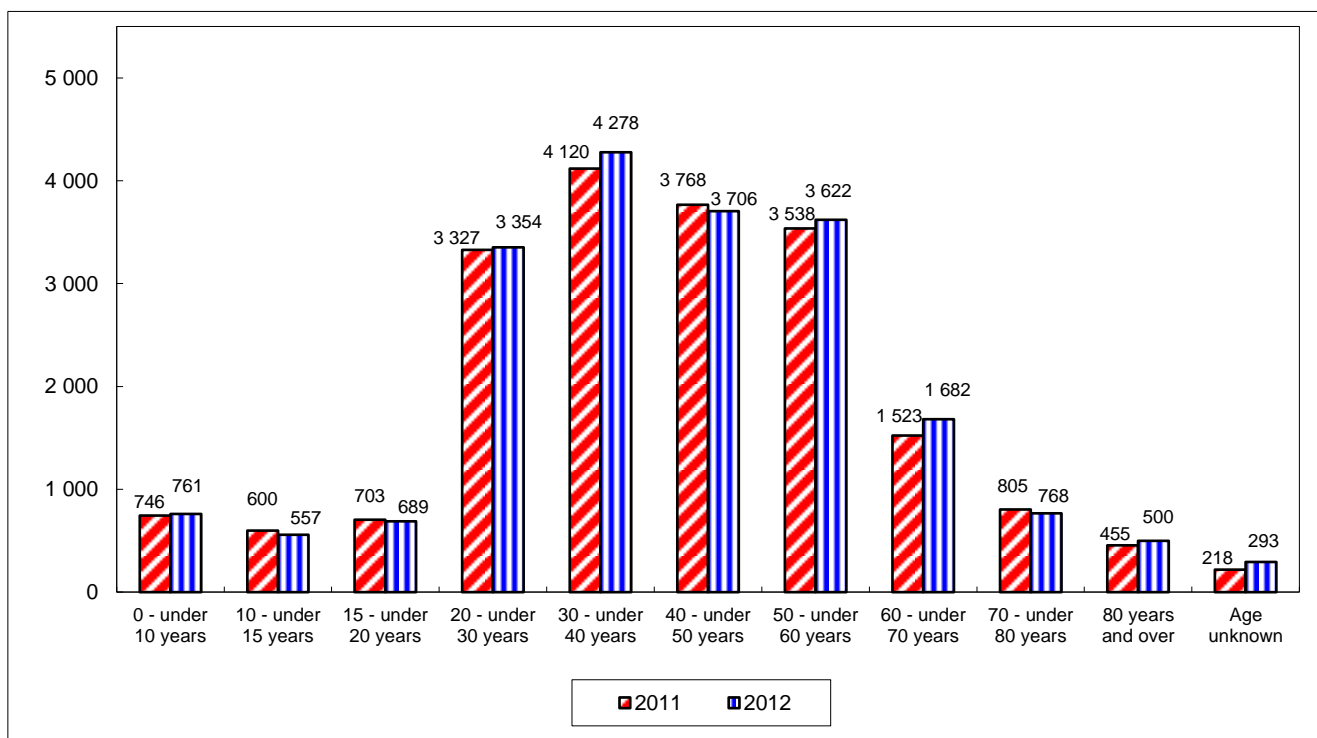


Table 28 - Traffic Casualties by Age Group

Year Age \ Severity	2011						2012						±% change
	Fatal	% share	Serious	Slight	Total	% share	Fatal	% share	Serious	Slight	Total	% share	
0 - under 10 years	0	0%	41	705	746	4%	1	0.8%	34	726	761	4%	+2%
10 - under 15 years	1	0.8%	72	527	600	3%	1	0.8%	59	497	557	3%	-7%
15 - under 20 years	0	0%	81	622	703	4%	3	3%	90	596	689	3%	-2%
20 - under 30 years	12	9%	354	2 961	3 327	17%	12	10%	382	2 960	3 354	17%	+0.8%
30 - under 40 years	9	7%	389	3 722	4 120	21%	18	15%	482	3 778	4 278	21%	+4%
40 - under 50 years	16	12%	407	3 345	3 768	19%	9	8%	398	3 299	3 706	18%	-2%
50 - under 60 years	24	18%	427	3 087	3 538	18%	21	18%	488	3 113	3 622	18%	+2%
60 - under 70 years	19	15%	210	1 294	1 523	8%	15	13%	253	1 414	1 682	8%	+10%
70 - under 80 years	25	19%	175	605	805	4%	16	13%	163	589	768	4%	-5%
80 years and over	24	18%	145	286	455	2%	24	20%	152	324	500	2%	+10%
Age unknown	0	0%	25	193	218	1%	0	0%	20	273	293	1%	+34%
Total	130		2 326	17 347	19 803		120		2 521	17 569	20 210		+2%

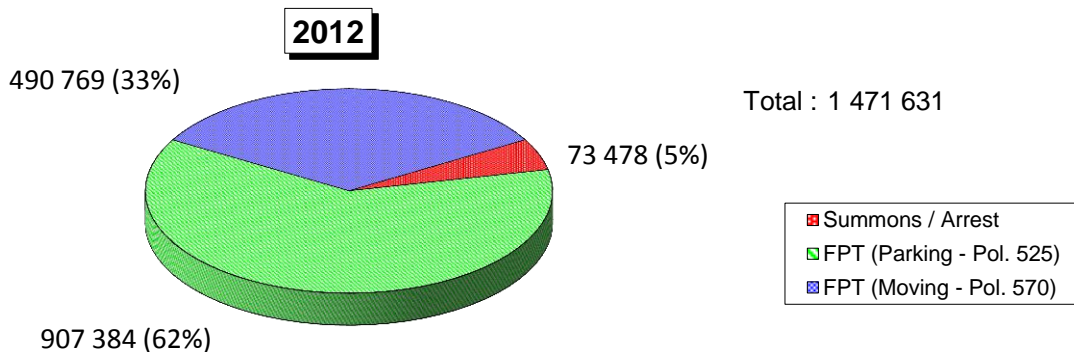
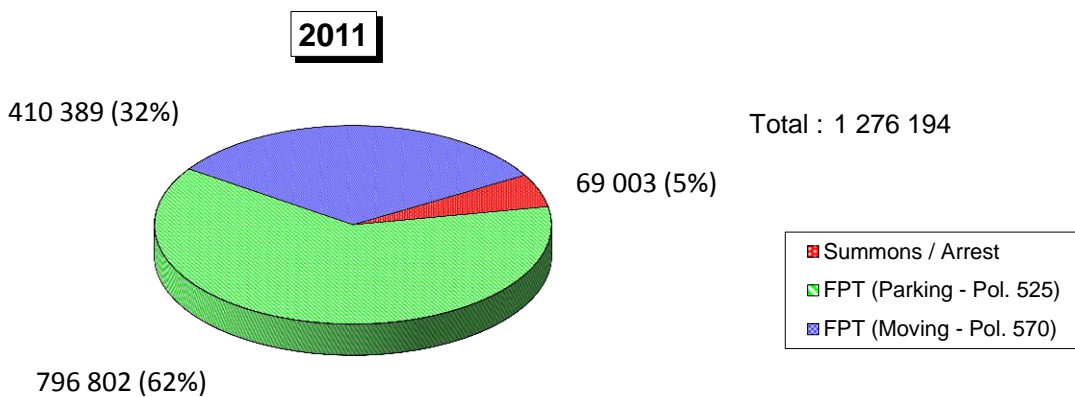
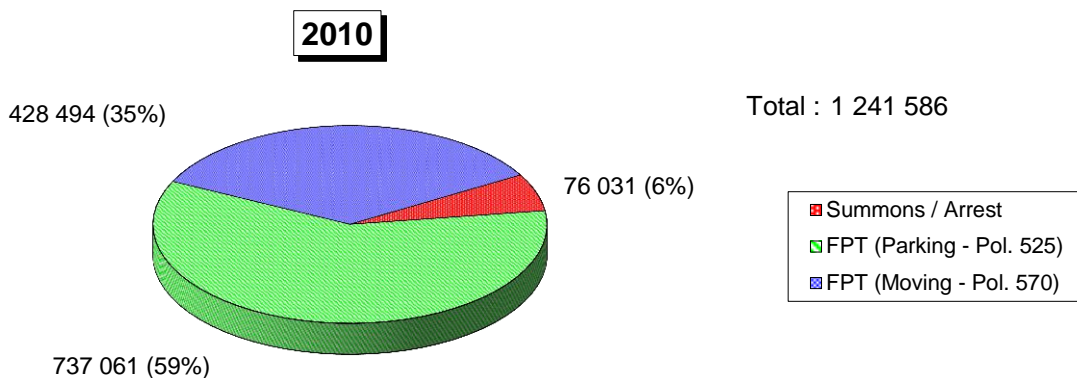
Table 29 - Comparison of Traffic Casualties by Age Group



Part B

Traffic Enforcement Statistics for 2012

Table 30 - Comparison of Traffic Enforcement



Fixed Penalty Tickets (FPT) / Summons / Arrest

Road traffic enforcement statistics for 2012 compared with 2011 are as follows :

	<u>2011</u>	<u>2012</u>	<u>+ % Change</u>	
FPT (Parking - Pol. 525)	796 802	907 384	+110 582	(+14%)
FPT (Moving - Pol. 570)	410 389	490 769	+80 380	(+20%)
Summons / Arrest	69 003	73 478	+4 475	(+6%)
Total	1 276 194	1 471 631	+195 437	(+15%)

Table 31 - Comparison of Selective Traffic Enforcement Policy (STEP) Statistics

	Offences	2010		2011		2012	
		S/Arr	FPT	S/Arr	FPT	S/Arr	FPT
*	Drink driving	1 147		1 026		955	
*	Drug driving	84		51		55	
* 1	Dangerous driving (included causing death)	651		609		379	
* 1.1	Dangerous driving causing grievous bodily harm	0		9		14	
* 2	Careless driving	16 585		16 286		16 305	
* 3	Speeding by 15+ km/h to 30 km/h	1 974	123 266	1 689	95 032	1 742	120 176
* 3.1	Speeding by 30+ km/h to 45 km/h	181	6 394	155	5 250	188	7 655
* 3.2	Speeding by more than 45 km/h	399	2	378	2	645	0
3.3	Speeding by 15 km/h or less	606	83 690	823	84 663	1 081	134 762
* 4	Double white line offences	181	16 603	223	16 119	246	17 502
* 5	Traffic signal offences	591	32 256	933	49 942	987	54 828
6	U turn causing obstruction	0	24	0	38	0	39
7	Overloading	1 178	6 784	1 090	6 621	660	4 361
8	Insecure load	18	1 034	25	1 011	20	1 086
9	Traffic sign offences	553	37 805	1 023	37 637	1 077	39 358
10	Expressway offside lane restriction	233	6 050	275	7 379	289	6 959
10.1	Overtaking on the nearside	5	830	3	1 274	0	1 021
10.2	Failing to drive on nearside lane	9		10		2	
11	Box junction offence	2	1 411	3	1 013	5	1 147
11.1	Yellow stripe crossing		2 333		1 737		1 464
12	Seatbelt offences	1 947	14 220	1 664	12 777	2 188	11 057
13	Using handheld mobile phone/telecommunications equipment while vehicle is in motion	61	33 870	43	32 890	37	28 725
* 14	Driving in a motor race or speed trial	46		19		15	
* 15	Failing to give precedence to pedestrian on zebra crossing	3	135	9	209	7	187
16	Construction and maintenance offences	6 419	111	4 720	148	4 904	197
17	Road work signage and lighting offences	412		361		352	
A1	STEP offences by Drivers	33 285	366 818	31 427	353 742	32 153	430 524
	Sub-total	400 103		385 169		462 677	
A2	Other moving offences by Drivers	9 797	61 676	8 615	56 647	9 221	60 245
A3	Total traffic offences by Drivers	471 576		450 431		532 143	
16	Reckless cycling	5		12		11	
17	Careless cycling	206		218		239	
18	Cycling under the influence of drink or drug	0		0		0	
19	Negligent riding	0		0		0	
B1	STEP offences by Cyclists	211		230		250	
B2	Other moving offences by Cyclists	9 016		8 424		11 622	
B3	Total traffic offences by Cyclists	9 227		8 654		11 872	
C1	STEP offences by Drivers and Cyclists	33 496	366 818	31 657	353 742	32 403	430 524
C2	Other moving offences by Drivers and Cyclists	18 813	61 676	17 039	56 647	20 843	60 245
C3	Total traffic offences by Drivers and Cyclists	52 309	428 494	48 696	410 389	53 246	490 769
		480 803		459 085		544 015	
D1	STEP offences by Pedestrians	23 599		20 178		20 141	
D2	Other offences by Pedestrians	123		129		91	
D3	Total Pedestrian offences	23 722		20 307		20 232	
E1	Total STEP offences	423 913		405 577		483 068	
E2	Total other offences	80 612		73 815		81 179	
E3	Grand total	504 525		479 392		564 247	
F1	Total Pol. 525	737 061		796 802		907 384	
G1	Verbal warnings - Drivers	212 074		203 200		167 237	
G2	Verbal warnings - Cyclists	12 120		12 188		13 382	
G3	Verbal warnings - Pedestrians	32 179		26 844		20 564	
G4	Total Warnings	256 373		242 232		201 183	

* Driving Offence Points Incurred

S/Arr stands for Summons/Arrests

FPT stands for Fixed Penalty Tickets (Moving Offences - Pol. 570)

Table 32 - Enforcement Statistics by Police Regions in 2012

Offences	HKI		KE		KW		NTS		NTN		M		THQ		Total	
	S/Arr	FPT	S/Arr	FPT	S/Arr	FPT	S/Arr	FPT	S/Arr	FPT	S/Arr	FPT	S/Arr	FPT**	S/Arr	FPT
* Drink Driving	81		262		137		205		270						955	
* Drug Driving	9		4		8		4		30						55	
*1 Dangerous driving (included causing death)	87		48		43		85		115				1		379	
*1.1 Dangerous driving causing grievous bodily harm			7		1		6								14	
*2 Careless driving	3 585		2 232		4 047		3 431		3 008				2		16 305	
*3 Speeding by 15+ km/h to 30 km/h	70	6 406	166	14 374	53	7 144	951	63 442	492	28 810			10		1 742	120 176
*3.1 Speeding by 30+ km/h to 45 km/h	13	449	26	896	3	374	90	3 833	56	2 103					188	7 655
*3.2 Speeding by more than 45 km/h	30		22		54		272		267						645	
3.3 Speeding by 15 km/h or less	235	28 618	148	22 239	79	14 554	246	40 835	372	28 516			1		1 081	134 762
*4 Double white line offences	134	5 136	15	3 530	30	3 832	28	2 499	33	2 505			6		246	17 502
*5 Traffic signal offences	140	9 045	86	5 386	357	21 236	95	7 827	302	11 334			7		987	54 828
6 U turn causing obstruction		9		5		7		3		15						39
7 Overloading	22	144	16	494	14	638	167	1 629	335	1 456			106		660	4 361
8 Insecure load	5	66	1	324	2	19	3	523	9	154					20	1 086
9 Traffic sign offences	139	16 798	13	3 914	35	8 676	872	6 689	10	3 281	3		5		1 077	39 358
10 Expressway offside lane restriction	2	518	2	451	1	170	147	3 893	135	1 927			2		289	6 959
10.1 Overtaking on the nearside		9		16		4		476		516						1 021
10.2 Failing to drive on nearside lane							1		1						2	
11 Box junction offence		341		30	5	536		210		30					5	1 147
11.1 Yellow stripe crossing		331		15		1 084		23		11						1 464
12 Seat belt offences	946	2 744	429	913	199	2 559	209	2 628	403	2 213			2		2 188	11 057
13 Using handheld mobile phone/telecommunications equipment while vehicle is in motion	8	5 665	3	2 770	5	4 094	12	8 557	7	7 639			2		37	28 725
*14 Driving in a motor race or speed trial							1		14						15	
*15 Failing to give precedence to pedestrian on zebra crossing	5	26		53	1	19		22		67			1		7	187
16 Construction and maintenance offences	1 848	43	288	32	807	12	766	53	1 195	57					4 904	197
17 Road work signage and lighting offences	78		93		18		117		46						352	
A1 STEP offences by Drivers	7 437	76 348	3 861	55 442	5 899	64 958	7 708	143 142	7 100	90 634	3		145		32 153	430 524
Sub-total	83 785		59 303		70 857		150 850		97 734		3		145		462 677	
A2 Other moving offences by Drivers	1 554	19 839	1 165	5 706	2 480	14 896	2 009	10 259	1 939	9 545	58		16		9 221	60 245
A3 Total traffic offences by Drivers	105 178		66 174		88 233		163 118		109 218		61		161		532 143	
18 Reckless cycling	2						2		7						11	
19 Careless cycling	22		31		24		44		117		1				239	
20 Cycling under the influence of drink or drug																
21 Negligent riding																
B1 STEP offences by Cyclists	24		31		24		46		124		1				250	
B2 Other moving offences by Cyclists	225		841		983		2 258		7 143		166		6		11 622	
B3 Total Traffic offences by Cyclists	249		872		1 007		2 304		7 267		167		6		11 872	
C1 STEP offences by Drivers and Cyclists	7 461	76 348	3 892	55 442	5 923	64 958	7 754	143 142	7 224	90 634	4		145		32 403	430 524
C2 Other moving offences by Drivers and Cyclists	1 779	19 839	2 006	5 706	3 463	14 896	4 267	10 259	9 082	9 545	224		22		20 843	60 245
C3 Total traffic offences by Drivers and Cyclists	9 240		5 898		9 386		12 021		16 306		228		167		53 246	
Sub-total	105 427		67 046		89 240		165 422		116 485		228		167		544 015	
D1 STEP offences by Pedestrians	1 747		2 760		6 366		3 759		5 509						20 141	
D2 Other offences by Pedestrians	1		82		5				3						91	
D3 Total Pedestrian offences	1 748		2 842		6 371		3 759		5 512		0		0		20 232	
E1 Total STEP offences	85 556		62 094		77 247		154 655		103 367		4		145		483 068	
E2 Total other offences	21 619		7 794		18 364		14 526		18 630		224		22		81 179	
E3 Grand total	107 175		69 888		95 611		169 181		121 997		228		167		564 247	
F1 Total Pol. 525	234 548		101 895		309 877		117 006		144 058		0		0		907 384	
G1 Verbal warnings - Drivers	6 069		47 403		61 851		50 491		1 423						167 237	
G2 Verbal warnings - Cyclists	37		214		2 159		6 098		4 874						13 382	
G3 Verbal warnings - Pedestrians	1 366		565		3 819		10 641		4 173						20 564	
G4 Total Warnings	7 472		48 182		67 829		67 230		10 470		0		0		201 183	

* Driving Offence Points Incurred
 ** FPT (Moving Offences - Pol. 570) of CTPD included in respective Regions.
 S/Arr stands for Summons/Arrests
 FPT stands for Fixed Penalty Tickets (Moving Offences - Pol. 570)

Table 33 - Complaints against Taxi Related Offences in 2012

Complaints received for	Complaints reported to Police (including TCU referrals)						Complaints reported to TCU	Referral from TCU to Police
	HKI	KE	KW	NTS	NTN	Total		
Soliciting Passengers	371	9	5	4	4	393	24	0
Refusing hire	658	100	334	129	70	1 291	2 063	443
Refusing to drive to destination	126	37	73	27	43	306	486	73
Failing to drive to destination by direct route	232	147	349	109	47	884	1 590	244
Overcharging	149	63	176	169	88	645	1 525	202
Taximeter offences	17	27	17	15	30	106	378	81
Behaving other than in a civil and orderly manner	330	73	217	100	63	783	1 510	193
Others	213	201	169	594	24	1 201	1 264	268
Total	2 096	657	1 340	1 147	369	5 609	8 840	1 504

Table 34 - Prosecutions against Taxi Related Offences in 2012

Action	Offence	HKI	KE	KW	NTS	NTN	Total
Pol. 570 (FPT)	Taxi driver not moving forward at taxi stand	0	0	0	0	10	10
	Taxi driver of first or second taxi at taxi stand not sitting in or standing beside his taxi	9	2	11	3	4	29
	Taxi driver at stand accepting hire out of turn	6	0	0	0	6	12
	Not setting taximeter to recording position	0	0	0	0	38	38
	Seatbelt offences	360	89	283	346	80	1 158
	<i>Sub-total</i>		<i>375</i>	<i>91</i>	<i>294</i>	<i>349</i>	<i>138</i>
Summons or Arrest	Soliciting passenger	30	0	17	0	4	51
	Refusing hire	46	9	21	2	3	81
	Refusing to drive to destination	13	2	9	2	3	29
	Failing to drive to destination by the most direct and practicable route	8	4	20	2	0	34
	Overcharging	2	2	18	7	0	29
	Taximeter offences	7	1	57	2	0	67
	Stopping elsewhere than at taxi stand	2	0	0	0	29	31
	Behaving other than in a civil and orderly manner	21	8	21	9	7	66
	Seatbelt offences	366	29	19	0	2	416
	Taxi stand offences	97	8	498	247	18	868
	Taxi driver identity plate offences	10	1	226	75	5	317
	Other offences	18	14	76	69	12	189
	<i>Sub-total</i>		<i>620</i>	<i>78</i>	<i>982</i>	<i>415</i>	<i>83</i>
Grand Total		995	169	1 276	764	221	3 425

Table 35 - Prosecutions Arising from Traffic Accidents

Offence	2011	2012	±% change
Dangerous Driving Causing Death	39	40	+3%
Dangerous Driving	211	248	+18%
Careless Driving	12 310	12 662	+3%
Speeding	2	1	-50%
Drink Driving	192	202	+5%
Defective Vehicles	657	636	-3%
Others	1 853	2 043	+10%
Total (Summons/Arrest)	15 264	15 832	+4%

Table 36 - Enforcement Statistics by Police Formations in 2012 - HKI

Offences	T HKI		EU HKI		Central		Wanchai		Western		Eastern		Total	
	S/Arr	FPT	S/Arr	FPT	S/Arr	FPT	S/Arr	FPT	S/Arr	FPT	S/Arr	FPT		FPT #
* Drink Driving	81												81	
* Drug Driving	9												9	
*1 Dangerous driving (included causing death)	87												87	
*1.1 Dangerous driving causing grievous bodily harm														
*2 Careless driving	3 562				1		8		12		2		3 585	
*3 Speeding by 15+ km/h to 30 km/h	70	6 406											70	6 406
*3.1 Speeding by 30+ km/h to 45 km/h	13	449											13	449
*3.2 Speeding by more than 45 km/h	30												30	
3.3 Speeding by 15 km/h or less	235	28 618											235	28 618
*4 Double white line offences	127	4 678	1	8	1	75	1	232	4	109		34	134	5 136
*5 Traffic signal offences	137	8 965	1	10		13		12	1	32	1	13	140	9 045
6 U turn causing obstruction		4				2				3				9
7 Overloading	22	144											22	144
8 Insecure load	5	49		1		3		2		8		3	5	66
9 Traffic sign offences	54	9 818		28	8	2 335	71	2 782	3	938	3	897	139	16 798
10 Expressway offside lane restriction	2	517										1	2	518
10.1 Overtaking on the nearside		9												9
10.2 Failing to drive on nearside lane														
11 Box junction offence		229		1		23		67		19		2		341
11.1 Yellow stripe crossing		168				66		86		10		1		331
12 Seat belt offences	892	2 097		1		70	50	186	3	279	1	111	946	2 744
13 Using handheld mobile phone/telecommunications equipment	7	4 869		2		162	1	237		292		103	8	5 665
*14 Driving in a motor race or speed trial														
*15 Failing to give precedence to pedestrian on zebra crossing	5	21								1		4	5	26
16 Construction and maintenance offences	1 844	43			3						1		1 848	43
17 Road work signage and lighting offences	78												78	
A1 STEP offences by Drivers	7 260	67 084	2	51	13	2 749	131	3 604	23	1 691	8	1 169	7 437	76 348
Sub-total	74 344		53		2 762		3 735		1 714		1 177		83 785	
A2 Other moving offences by Drivers	1 217	8 942	6	44	90	5 083	99	3 090	48	1 760	94	863	1 554	19 839
A3 Total traffic offences by Drivers	84 503		103		7 935		6 924		3 522		2 134		105 178	
18 Reckless cycling	2												2	
19 Careless cycling	20						2						22	
20 Cycling under the influence of drink or drug														
21 Negligent riding														
B1 STEP offences by Cyclists	22						2						24	
B2 Other moving offences by Cyclists	157				1		54		3		10		225	
B3 Total Traffic offences by Cyclists	179		0		1		56		3		10		249	
C1 STEP offences by Drivers and Cyclists	7 282	67 084	2	51	13	2 749	133	3 604	23	1 691	8	1 169	7 461	76 348
C2 Other moving offences by Drivers and Cyclists	1 374	8 942	6	44	91	5 083	153	3 090	51	1 760	104	863	1 779	19 839
C3 Total traffic offences by Drivers and Cyclists	8 656	76 026	8	95	104	7 832	286	6 694	74	3 451	112	2 032	9 240	96 187
Sub-total	84 682		103		7 936		6 980		3 525		2 144		105 427	
D1 STEP offences by Pedestrians	137		1		258		301		698		352		1 747	
D2 Other offences by Pedestrians	1												1	
D3 Total Pedestrian offences	138		1		258		301		698		352		1 748	
E1 Total STEP offences	74 503		54		3 020		4 038		2 412		1 529		85 556	
E2 Total other offences	10 317		50		5 174		3 243		1 811		967		21 619	
E3 Grand total	84 820		104		8 194		7 281		4 223		2 496		107 175	
F1 Total Pol. 525	5 548		150		72 102		58 258		45 229		53 261		234 548	
G1 Verbal warnings - Drivers	76		16		19		1 361		4 545		52		6 069	
G2 Verbal warnings - Cylists	8						18				11		37	
G3 Verbal warnings - Pedestrians	127		3		87		78		591		480		1 366	
G4 Total Warnings	211		19		106		1 457		5 136		543		7 472	

Including 57 FPT (Moving Offences - Pol. 570) from CTPD.
 * Driving Offence Points Incurred
 S/Arr stands for Summons/Arrests
 FPT stands for Fixed Penalty Tickets (Moving Offences - Pol. 570)

Table 37 - Enforcement Statistics by Police Formations in 2012 - KE

Offences	T KE		EU KE		Wong Tai Sin		Sau Mau Ping		Kwun Tong		Total	
	S/Arr	FPT	S/Arr	FPT	S/Arr	FPT	S/Arr	FPT	S/Arr	FPT	S/Arr	FPT #
* Drink Driving	262										262	
* Drug Driving	4										4	
*1 Dangerous driving (included causing death)	48										48	
*1.1 Dangerous driving causing grievous bodily harm	7										7	
*2 Careless driving	2 215		2		4		3		8		2 232	
*3 Speeding by 15+ km/h to 30 km/h	165	14 374			1						166	14 374
*3.1 Speeding by 30+ km/h to 45 km/h	26	896									26	896
*3.2 Speeding by more than 45 km/h	22										22	
3.3 Speeding by 15 km/h or less	148	22 239									148	22 239
*4 Double white line offences	11	3 220		9	3	199		75	1	27	15	3 530
*5 Traffic signal offences	86	5 343				20		13		10	86	5 386
6 U turn causing obstruction		2								3		5
7 Overloading	16	494									16	494
8 Insecure load	1	311				2		4		7	1	324
9 Traffic sign offences	7	1 786		4	2	429		985	4	710	13	3 914
10 Expressway offside lane restriction	2	442						7		2	2	451
10.1 Overtaking on the nearside		16										16
10.2 Failing to drive on nearside lane												
11 Box junction offence		16				4		8		2		30
11.1 Yellow stripe crossing		6						7		2		15
12 Seatbelt offences	201	800		1	30	36	6	19	192	57	429	913
13 Using handheld mobile phone/telecommunications equipment	2	2 372		3		81		187	1	127	3	2 770
*14 Driving in a motor race or speed trial												
*15 Failing to give precedence to pedestrian on zebra crossing		28				20		2		3		53
16 Construction and maintenance offences	284	31		1					4		288	32
17 Road work signage and lighting offences	93										93	
A1 STEP offences by Drivers	3 600	52 376	2	18	40	791	9	1 307	210	950	3 861	55 442
Sub-total	55 976		20		831		1 316		1 160		59 303	
A2 Other moving offences by Drivers	890	2 507	7	32	45	923	116	1 065	107	1 105	1 165	5 706
A3 Total traffic offences by Drivers	59 373		59		1 799		2 497		2 372		66 174	
18 Reckless cycling												
19 Careless cycling	31										31	
20 Cycling under the influence of drink or drug												
21 Negligent riding												
B1 STEP offences by Cyclists	31										31	
B2 Other moving offences by Cyclists	148				98		56		539		841	
B3 Total Traffic offences by Cyclists	179				98		56		539		872	
C1 STEP offences by Drivers and Cyclists	3 631	52 376	2	18	40	791	9	1 307	210	950	3 892	55 442
C2 Other moving offences by Drivers and Cyclists	1 038	2 507	7	32	143	923	172	1 065	646	1 105	2 006	5 706
C3 Total traffic offences by Drivers and Cyclists	4 669	54 883	9	50	183	1 714	181	2 372	856	2 055	5 898	61 148
Sub-total	59 552		59		1 897		2 553		2 911		67 046	
D1 STEP offences by Pedestrians	626				776		465		893		2 760	
D2 Other offences by Pedestrians	37				10				35		82	
D3 Total Pedestrian offences	663		0		786		465		928		2 842	
E1 Total STEP offences	56 633		20		1 607		1 781		2 053		62 094	
E2 Total other offences	3 582		39		1 076		1 237		1 786		7 794	
E3 Grand total	60 215		59		2 683		3 018		3 839		69 888	
F1 Total Pol. 525	253		11		36 903		18 903		45 825		101 895	
G1 Verbal warnings - Drivers	174				27 610		8 230		11 389		47 403	
G2 Verbal warnings - Cyclists	68		23		12		22		89		214	
G3 Verbal warnings - Pedestrians	157		50		26		137		195		565	
G4 Total Warnings	399		73		27 648		8 389		11 673		48 182	

Including 74 FPT (Moving Offences - Pol. 570) from CTPD.
 * Driving Offence Points Incurred
 S/Arr stands for Summons/Arrests
 FPT stands for Fixed Penalty Tickets (Moving Offences - Pol. 570)

Table 38 - Enforcement Statistics by Police Formations in 2012 - KW

Offences	T KW		EU KW		Yau Tsim		Shamshuipo		Mongkok		Kowloon City		Total	
	S/Arr	FPT	S/Arr	FPT	S/Arr	FPT	S/Arr	FPT	S/Arr	FPT	S/Arr	FPT	S/Arr	FPT #
* Drink Driving	137												137	
* Drug Driving	8												8	
*1 Dangerous driving (included causing death)	42		1										43	
*1.1 Dangerous driving causing grievous bodily harm	1												1	
*2 Careless driving	3 996		5		10		6		2		28		4 047	
*3 Speeding by 15+ km/h to 30 km/h	53	7 144											53	7 144
*3.1 Speeding by 30+ km/h to 45 km/h	3	374											3	374
*3.2 Speeding by more than 45 km/h	54												54	
3.3 Speeding by 15 km/h or less	79	14 554											79	14 554
*4 Double white line offences	22	3 434		5	2	141	1	59	1	90	4	103	30	3 832
*5 Traffic signal offences	353	21 129		6	1	28	2	19	1	21		33	357	21 236
6 U turn causing obstruction		7												7
7 Overloading	14	636									2		14	638
8 Insecure load	2	16						2		1			2	19
9 Traffic sign offences	25	2 434		16	2	2 560	3	1 866	2	380	3	1 420	35	8 676
10 Expressway offside lane restriction	1	170											1	170
10.1 Overtaking on the nearside		3				1								4
10.2 Failing to drive on nearside lane														
11 Box junction offence	4	372		3	1	125		5		22		9	5	536
11.1 Yellow stripe crossing		881				161		5		17		20		1 084
12 Seatbelt offences	67	2 161		5	5	93		117	110	92	17	91	199	2 559
13 Using handheld mobile phone/telecommunications equipment	3	3 399		4		213		149		172	2	157	5	4 094
*14 Driving in a motor race or speed trial														
*15 Failing to give precedence to pedestrian on zebra crossing	1	19											1	19
16 Construction and maintenance offences	618	10				1	121		21	1	47		807	12
17 Road work signage and lighting offences	18												18	
A1 STEP offences by Drivers	5 501	56 743	6	39	21	3 323	133	2 222	137	796	101	1 835	5 899	64 958
Sub-total	62 244		45		3 344		2 355		933		1 936		70 857	
A2 Other moving offences by Drivers	1 087	3 007	2	36	520	5 926	238	2 154	252	1 257	381	2 475	2 480	14 896
A3 Total traffic offences by Drivers	66 338		83		9 790		4 747		2 442		4 792		88 233	
18 Reckless cycling														
19 Careless cycling	12		1		5		5				1		24	
20 Cycling under the influence of drink or drug														
21 Negligent riding														
B1 STEP offences by Cyclists	12		1		5		5				1		24	
B2 Other moving offences by Cyclists	366		2		138		341		88		48		983	
B3 Total Traffic offences by Cyclists	378		3		143		346		88		49		1 007	
C1 STEP offences by Drivers and Cyclists	5 513	56 743	7	39	26	3 323	138	2 222	137	796	102	1 835	5 923	64 958
C2 Other moving offences by Drivers and Cyclists	1 453	3 007	4	36	658	5 926	579	2 154	340	1 257	429	2 475	3 463	14 896
C3 Total traffic offences by Drivers and Cyclists	6 966	59 750	11	75	684	9 249	717	4 376	477	2 053	531	4 310	9 386	79 854
	66 716		86		9 933		5 093		2 530		4 841		89 240	
D1 STEP offences by Pedestrians	1 043		1		1 247		2 210		1 132		733		6 366	
D2 Other offences by Pedestrians					4				1				5	
D3 Total Pedestrian offences	1 043		1		1 251		2 210		1 133		733		6 371	
E1 Total STEP offences	63 299		47		4 596		4 570		2 065		2 670		77 247	
E2 Total other offences	4 460		40		6 588		2 733		1 598		2 904		18 364	
E3 Grand total	67 759		87		11 184		7 303		3 663		5 574		95 611	
F1 Total Pol. 525	332		42		82 515		78 522		75 217		73 249		309 877	
G1 Verbal warnings - Drivers	16				7 460		7 395		33 230		13 750		61 851	
G2 Verbal warnings - Cyclists	1 659				345		41		111		3		2 159	
G3 Verbal warnings - Pedestrians	1 948				711		355		320		485		3 819	
G4 Total Warnings	3 623		0		8 516		7 791		33 661		14 238		67 829	

Including 41 FPT (Moving Offences - Pol. 570) from CTPD.
 * Driving Offence Points Incurred
 S/Arr stands for Summons/Arrests
 FPT stands for Fixed Penalty Tickets (Moving Offences - Pol. 570)

Table 39 - Enforcement Statistics by Police Formations in 2012 - NTS

Offences	T NTS		EU NTS		Tsuen Wan		Shatin		Kwai Tsing		Lantau		Airport		Total	
	S/Arr	FPT	S/Arr	FPT	S/Arr	FPT	S/Arr	FPT	S/Arr	FPT	S/Arr	FPT	S/Arr	FPT	S/Arr	FPT #
* Drink Driving	205														205	
* Drug Driving	4														4	
*1 Dangerous driving (included causing death)	83								1		1				85	
*1.1 Dangerous driving causing grievous bodily harm	6														6	
*2 Careless driving	3 374				8		8		5		28		8		3 431	
*3 Speeding by 15+ km/h to 30 km/h	950	63 388									1	54			951	63 442
*3.1 Speeding by 30+ km/h to 45 km/h	90	3 831										2		90	3 833	
*3.2 Speeding by more than 45 km/h	272													272		
3.3 Speeding by 15 km/h or less	246	40 801										34		246	40 835	
*4 Double white line offences	20	2 216				83	3	37	3	148		14	2	1	28	2 499
*5 Traffic signal offences	93	7 757		1		15	1	25		24		5	1		95	7 827
6 U turn causing obstruction						1		1		1						3
7 Overloading	167	1 629													167	1 629
8 Insecure load	3	464						3		54		1		1	3	523
9 Traffic sign offences	29	4 177		2	3	589		601		1 233		87	840		872	6 689
10 Expressway offside lane restriction	147	3 890				1				1		1			147	3 893
10.1 Overtaking on the nearside		475				1										476
10.2 Failing to drive on nearside lane	1														1	
11 Box junction offence		164				28		2		16						210
11.1 Yellow stripe crossing		19				4										23
12 Seatbelt offences	86	2 452			45	31	25	39	48	69	1	10	4	27	209	2 628
13 Using handheld mobile phone/telecommunications	11	8 323			1	41		49		115		7		22	12	8 557
*14 Driving in a motor race or speed trial	1														1	
*15 Failing to give precedence to pedestrian on zebra crossing		20						2								22
16 Construction and maintenance offences	724	53						28		13		1			766	53
17 Road work signage and lighting offences	117														117	
A1 STEP offences by Drivers	6 629	139 659		3	57	794	65	759	70	1 661	32	215	855	51	7 708	143 142
Sub-total	146 288		3		851		824		1 731		247		906		150 850	
A2 Other moving offences by Drivers	1 409	6 309	1	28	125	896	79	1 076	234	1 115	15	760	146	22	2 009	10 259
A3 Total traffic offences by Drivers	154 006		32		1 872		1 979		3 080		1 022		1 074		163 118	
18 Reckless cycling	2														2	
19 Careless cycling	29				4		5		4		2				44	
20 Cycling under the influence of drink or drug																
21 Negligent riding																
B1 STEP offences by Cyclists	31				4		5		4		2				46	
B2 Other moving offences by Cyclists	478				250		1 193		109		218		10		2 258	
B3 Total Traffic offences by Cyclists	509		0		254		1 198		113		220		10		2 304	
C1 STEP offences by Drivers and Cyclists	6 660	139 659		3	61	794	70	759	74	1 661	34	215	855	51	7 754	143 142
C2 Other moving offences by Drivers and Cyclists	1 887	6 309	1	28	375	896	1 272	1 076	343	1 115	233	760	156	22	4 267	10 259
C3 Total traffic offences by Drivers and Cyclists	8 547	145 968	1	31	436	1 690	1 342	1 835	417	2 776	267	975	1 011	73	12 021	153 401
Sub-total	154 515		32		2 126		3 177		3 193		1 242		1 084		165 422	
D1 STEP offences by Pedestrians	909				842		633		1 084		137		154		3 759	
D2 Other offences by Pedestrians																
D3 Total Pedestrian offences	909		0		842		633		1 084		137		154		3 759	
E1 Total STEP offences	147 228		3		1 697		1 462		2 819		386		1 060		154 655	
E2 Total other offences	8 196		29		1 271		2 348		1 458		993		178		14 526	
E3 Grand total	155 424		32		2 968		3 810		4 277		1 379		1 238		169 181	
F1 Total Pol. 525	468		0		36 352		44 779		30 771		4 406		230		117 006	
G1 Verbal warnings - Drivers	578				1 878		10 405		37 570		27		33		50 491	
G2 Verbal warnings - Cyclists	191				2 200		3 494		144		69				6 098	
G3 Verbal warnings - Pedestrians	246				6 083		3 093		1 154		57		8		10 641	
G4 Total Warnings	1 015		0		10 161		16 992		38 868		153		41		67 230	

Including 53 FPT (Moving Offences - Pol. 570) from CTPD.
 * Driving Offence Points Incurred
 S/Arr stands for Summons/Arrests
 FPT stands for Fixed Penalty Tickets (Moving Offences - Pol. 570)

Table 40 - Enforcement Statistics by Police Formations in 2012 - NTN

Offences	T NTN		EU NTN		Border		Yuen Long		Tuen Mun		Tai Po		Total	
	S/Arr	FPT	S/Arr	FPT	S/Arr	FPT	S/Arr	FPT	S/Arr	FPT	S/Arr	FPT	S/Arr	FPT #
* Drink Driving	270												270	
* Drug Driving	30												30	
*1 Dangerous driving (included causing death)	114						1						115	
*1.1 Dangerous driving causing grievous bodily harm														
*2 Careless driving	2 974				5		12		6		11		3 008	
*3 Speeding by 15+ km/h to 30 km/h	492	28 809									1		492	28 810
*3.1 Speeding by 30+ km/h to 45 km/h	56	2 103											56	2 103
*3.2 Speeding by more than 45 km/h	267												267	
3.3 Speeding by 15 km/h or less	372	28 515										1	372	28 516
*4 Double white line offences	27	1 767		3	1	173	4	383		78	1	101	33	2 505
*5 Traffic signal offences	298	11 201		4		4	2	68	1	24	1	33	302	11 334
6 U turn causing obstruction		12								1		2		15
7 Overloading	335	1 456											335	1 456
8 Insecure load	9	141		1		4		2		1		5	9	154
9 Traffic sign offences	4	612		5	1	209		820	1	973	4	662	10	3 281
10 Expressway offside lane restriction	135	1 911				1		2				13	135	1 927
10.1 Overtaking on the nearside		507										9		516
10.2 Failing to drive on nearside lane	1												1	
11 Box junction offence		10					2	13		2		3		30
11.1 Yellow stripe crossing		3					1	1		4		2		11
12 Seatbelt offences	364	1 664			1	238	1	186		37	37	88	403	2 213
13 Using handheld mobile phone/telecommunications equipment	7	6 988		1		288		185		43		134	7	7 639
*14 Driving in a motor race or speed trial	14												14	
*15 Failing to give precedence to pedestrian on zebra crossing		33						30		4				67
16 Construction and maintenance offences	1 164	53			4	2	4				23	2	1 195	57
17 Road work signage and lighting offences	46												46	
A1 STEP offences by Drivers	6 979	85 785		14	12	922	24	1 690	8	1 167	77	1 056	7 100	90 634
Sub-total	92 764		14		934		1 714		1 175		1 133		97 734	
A2 Other moving offences by Drivers	1 645	3 440		43	17	954	171	2 871	47	913	59	1 288	1 939	9 545
A3 Total traffic offences by Drivers	97 849		57		1 905		4 756		2 135		2 480		109 218	
18 Reckless cycling	7												7	
19 Careless cycling	103						10		1		3		117	
20 Cycling under the influence of drink or drug														
21 Negligent riding														
B1 STEP offences by Cyclists	110						10		1		3		124	
B2 Other moving offences by Cyclists	2 270				47		1 823		899		2 104		7 143	
B3 Total Traffic offences by Cyclists	2 380		0		47		1 833		900		2 107		7 267	
C1 STEP offences by Drivers and Cyclists	7 089	85 785		14	12	922	34	1 690	9	1 167	80	1 056	7 224	90 634
C2 Other moving offences by Drivers and Cyclists	3 915	3 440		43	64	954	1 994	2 871	946	913	2 163	1 288	9 082	9 545
C3 Total traffic offences by Drivers and Cyclists	11 004	89 225	0	57	76	1 876	2 028	4 561	955	2 080	2 243	2 344	16 306	100 179
Sub-total	100 229		57		1 952		6 589		3 035		4 587		116 485	
D1 STEP offences by Pedestrians	1 551				46		1 750		1 306		856		5 509	
D2 Other offences by Pedestrians	3												3	
D3 Total Pedestrian offences	1 554		0		46		1 750		1 306		856		5 512	
E1 Total STEP offences	94 425		14		980		3 474		2 482		1 992		103 367	
E2 Total other offences	7 358		43		1 018		4 865		1 859		3 451		18 630	
E3 Grand total	101 783		57		1 998		8 339		4 341		5 443		121 997	
F1 Total Pol. 525	327		12		1 566		55 075		36 136		50 942		144 058	
G1 Verbal warnings - Drivers	241				270		192		66		654		1 423	
G2 Verbal warnings - Cyclists	1 726				212		1 030		411		1 495		4 874	
G3 Verbal warnings - Pedestrians	931				88		1 457		332		1 365		4 173	
G4 Total Warnings	2 898		0		570		2 679		809		3 514		10 470	

Including 36 FPT (Moving Offences - Pol. 570) from CTPD.
 * Driving Offence Points Incurred
 S/Arr stands for Summons/Arrests
 FPT stands for Fixed Penalty Tickets (Moving Offences - Pol. 570)