



# TRAFFIC REPORT 2011

TRAFFIC BRANCH HEADQUARTERS  
HONG KONG POLICE FORCE

## **Distribution (BY CD ROM)**

### **Internal**

DCP OPS  
D OPS  
ACP SUP  
RC HKI  
RC KE  
RC KW  
RC NTS  
RC NTN  
RC MAR  
CSP PPRB  
STSO, TPT, Transport Division  
Force Librarian

### **External**

#### **Government Secretariat and Government Departments**

Secretary for Education  
Secretary for the Environment  
Secretary for Transport and Housing  
Secretary for Home Affairs  
Commissioner for Transport  
Commissioner for Census and Statistics  
Commissioner for Insurance  
Director of Government Logistics  
Director of Highways  
Director of Information Services  
Director of Lands  
Director of Social Welfare  
Executive Manager (Professional Services)<sup>3</sup>, Hospital Authority  
The Consumer Council Library

#### **Judiciary**

Chief Magistrate  
Principal Magistrate (7 copies)

#### **Public Transport Operators**

City Bus Ltd.  
New World First Bus  
New Lantao Bus Co., (1973) Ltd.  
The Kowloon Motor Bus Co., (1933) Ltd.  
Mass Transit Railway Corporation

#### **Advisory Bodies**

Chairman and Members of Transport Advisory Committee (17 copies)  
Members of the Road Safety Council (14 copies)  
Executive Secretary, Transport Complaints Unit  
Secretary of the Traffic Accident Victims Assistance Advisory Committee

Tertiary Institutes

Librarian, Chinese University of Hong Kong  
Librarian, City University of Hong Kong  
Librarian, Hong Kong Baptist University  
Librarian, Hong Kong Polytechnic University  
Librarian, Hong Kong Shue Yan University  
Librarian, University of Hong Kong  
Librarian, Lingnan University  
Librarian, The Hong Kong Institute of Education  
Librarian, The Hong Kong University of Science and Technology  
Librarian, The Open University of Hong Kong

District Councils

New Territories North

The Chairman, North District Council  
The Chairman, Yuen Long District Council  
The Chairman, Tuen Mun District Council  
The Chairman, Tai Po District Council

New Territories South

The Chairman, Shatin District Council  
The Chairman, Kwai Tsing District Council  
The Chairman, Tsuen Wan District Council  
The Chairman, Islands District Council

Kowloon West

The Chairman, Yau Tsim Mong District Council  
The Chairman, Sham Shui Po District Council  
The Chairman, Kowloon City District Council

Kowloon East

The Chairman, Wong Tai Sin District Council  
The Chairman, Kwun Tong District Council  
The Chairman, Sai Kung District Council

Hong Kong Island

The Chairman, Eastern District Council  
The Chairman, Wanchai District Council  
The Chairman, Central & Western District Council  
The Chairman, Southern District Council

Others

Hong Kong School of Motoring, Road Safety Department, Operations Controller  
Quality Driver Training Centre Ltd

## List of Contents

	<u>Pages</u>
Introduction and Overall Situation	1-3
Explanatory Notes	4
 <b><u>Part A - Traffic Accidents and Casualties Report</u></b>	
Table 1 - Traffic Accidents by Police Regions	5
Table 2 - Traffic Accident Trends from 2007 – 2011	5
Table 3 - Monthly Figures for Traffic Accidents	6
Table 4 - Monthly Traffic Accident Trends for the past 13 months	6
Table 5 - Traffic Accidents by Police Divisions - HKI	7
Table 6 - Traffic Accidents by Police Divisions – KE	7
Table 7 - Traffic Accidents by Police Divisions – KW	8
Table 8 - Traffic Accidents by Police Divisions - NTS	8
Table 9 - Traffic Accidents by Police Divisions - NTN	9
Table 10 - Number of Vehicles involved in Traffic Accidents – 2010	10
Table 11 - Number of Vehicles involved in Traffic Accidents – 2011	11
Table 12 - Average Traffic Accidents by Hour of the Day	12
Table 13 - Average Traffic Accidents by Day of the Week	13
Table 14 - Major Driver Contributory Factors of Traffic Accidents	14
Table 15 - Comparison of Major Driver Contributory Factors of Traffic Accidents	14
Table 16 - Bicycle Accidents by Police Regions	15
Table 17 - Comparison of Bicycle Accidents by Police Districts	15
Table 18 - Traffic Accidents on Expressways	16
Table 19 - Major Driver Contributory Factors of Expressway Accidents	17

	<b><u>Pages</u></b>
Table 20 - Comparison of Major Driver Contributory Factors of Expressway Accidents	17
Table 21 - Top 20 Traffic Accident Blacksites in 2011 *	18
Table 22 - Traffic Casualties by Police Regions	19
Table 23 - Traffic Casualties Trends from 2007 – 2011	19
Table 24 - Monthly Figures for Traffic Casualties	20
Table 25 - Monthly Traffic Casualties Trends for the past 13 months	20
Table 26 - Traffic Casualties by Class of Road User	21
Table 27 - Comparison of Traffic Casualties by Class of Road User	21
Table 28 - Traffic Casualties by Age Group	22
Table 29 - Comparison of Traffic Casualties by Age Group	22

**Part B - Traffic Enforcement Report**

Table 30 - Comparison of Traffic Enforcement	23
Table 31 - Comparison of Selective Traffic Enforcement Policy (STEP) Statistics	24
Table 32 - Enforcement Statistics by Police Regions in 2011	25
Table 33 - Complaints against Taxi Related Offences in 2011	26
Table 34 - Prosecutions against Taxi Related Offences in 2011	27
Table 35 - Prosecutions Arising from Traffic Accidents	28
Table 36 - Enforcement Statistics by Police Formations in 2011 - HKI	29
Table 37 - Enforcement Statistics by Police Formations in 2011 - KE	30
Table 38 - Enforcement Statistics by Police Formations in 2011 - KW	31
Table 39 - Enforcement Statistics by Police Formations in 2011 - NTS	32
Table 40 - Enforcement Statistics by Police Formations in 2011 - NTN	33

\* Source : Transport Department

# **Traffic Report 2011**

## **Introduction**

This report comprises two parts. The first part provides a review on the traffic accidents and casualties in 2011 and the second part details police enforcement action taken in the same period.

2. The objectives of this report are threefold. Firstly, it provides a statistical illustration of the traffic accident and casualty figures and the overall enforcement action during the period under review. Secondly, it enables Regional and District Police management teams to evaluate the effectiveness of their own enforcement action in promoting road safety. Lastly, it avails data for research and analysis of traffic accidents by interested bodies.

## **Overall Situation**

### ***Traffic Accidents***

3. When compared with 2010, the total number of traffic accidents involving casualties increased by 598 cases (+4%) from 14 943 cases to 15 541 cases. Fatal accidents registered an increase of 14 cases (+12%) from 114 to 128. [ Table 1 ]

4. Road junctions and pedestrian crossings remained to be locations where traffic accidents were most likely to occur. Of the 15 541 accidents, 4 056 cases (26%) occurred at, or in the vicinity of, road junctions while 7 308 cases (47%) occurred at, or near, pedestrian crossings. Drivers' fault accounted for 76% (11 735 cases) of all traffic accidents.

5. In respect of the type of vehicles involved in traffic accidents, private cars formed the largest group at 6 591 (28%), followed by taxis at 4 259 (18%), goods vehicles at 3 833 (16%), bicycles at 2 500 (11%) and motorcycles at 2 328 (10%). However, working on the accident rate per 1 000 licensed vehicles, the most accident prone vehicle type was franchised public bus (372), followed by public light bus (263), taxi (235), other public bus (70) and motorcycle (61). The accident rate for private cars was only 16, the lowest among all vehicle classes. [ Table 11 ]

### ***Traffic Casualties***

6. When compared with 2010, the total number of traffic casualties increased by 679 persons (+4%) from 19 124 persons to 19 803 persons. Of the 19 803 casualties, 130 persons were killed, representing an increase of 13 persons (+11%). [ Table 22 ]

7. As regards traffic accident casualties, drivers (including motor-cyclists and cyclists) formed the largest group. There were 9 351 drivers (47%) injured, followed by 6 612 passengers (33%) and 3 840 pedestrians (19%). Pedestrian casualties recorded a higher rate of fatalities and serious injuries than that of any other category of casualties. Elderly pedestrians aged 60 or over remained the most vulnerable group in fatal traffic accidents. There were 19 cyclists killed in 2011, representing an increase of 90% when compared with 10 cyclists killed in 2010. The increase in cycling related accidents in recent years might be attributed to the increase in cycling activities in general. [ Table 26 & Table 28 ]

### ***Traffic Enforcement***

8. Police enforcement action in 2011 continued to concentrate on reducing traffic accidents and improving traffic flow. When compared with 2010, the overall enforcement figures increased by 3% to 1 276 194. [ Table 30 ]

9. On Drink Driving enforcement, a total of 163 639 drivers were breathalysed, an increase of 21% when compared with 2010. 1 026 drivers were found to have exceeded the prescribed limits whilst 492 drivers were below the limit, but had consumed some alcohol, a decrease of 121 drivers (-11%) and 110 drivers (-18%) respectively. The 'hit-rate' for drivers over the legal limit dropped pleasingly from 0.8% in 2010 to 0.6% in 2011 and it was evident that random breath testing operations have produced an obvious and positive impact on the attitude of motorists. [ Table 31 ]

10. In 2011, 738 drivers were convicted of various Drink Driving offences. Fines imposed ranged from \$400 to \$20,000 with disqualification periods varied from 3 to 60 months. 32 drivers were sentenced to imprisonment, ranging from 4 days to 4 months.

11. Operation Outranger targeting seatbelt offences has been coordinated by Traffic Branch Headquarters (TBHQ) since November 2005. Each operation lasts for 24 hours and focuses on education, publicity and enforcement. Three such operations were performed respectively in June, September and December 2011 with a total of 2 PLB drivers and 536 PLB passengers summonsed.

12. In 2011, Police received 3 484 taxi related complaints from members of the public and 1 789 referrals from the Transport Complaints Unit, making a total of 5 273 reports that required Police investigation, an increase of 25% (1 054 cases) when compared with 2010. A total of 2 784 prosecutions were instituted against taxi related offences, a decrease of 7% (221 cases) when compared with 2010. [ Table 33 & Table 34 ]

13. To address concerns over cycling safety, Operation Goldensun targeting cycling offences has been coordinated by TBHQ since 2003. Four such operations were conducted respectively in April, July, September and November 2011 with a total of 2 391 summonses and 866 verbal warnings issued to cyclists.

14. In 2011, a total of 2 141 persons were disqualified from driving, representing a decrease of 38% when compared with 2010. The risk of disqualification through accumulating 15 or more demerit points within 24 months remains an effective deterrent to drivers with a bad driving attitude.

Traffic Branch Headquarters  
Hong Kong Police Force  
June 2012



## **Explanatory Notes**

### Accidents

Each accident figure represents one incident although it may involve more than one vehicle and more than one casualty.

### Accident Analysis

The primary or contributory cause of any traffic accident referred to in this report represents the assessment by the police officer investigating the traffic accident.

### Accident Blacksite

If nine or more injury accidents, or six or more pedestrian injury accidents occur at a location in the previous 12 month period, the location will be classified as a *Traffic Accident Blacksite\**. Since 2010 Q1, locations where 2 or more fatal traffic accidents occurred in the previous 5 years, will also be classified as a *Traffic Accident Blacksite\**.

### Fatal Accidents

A traffic accident in which one or more persons dies within 30 days of the accident.

### Serious Accidents

A traffic accident in which one or more persons injured and detained in hospital for more than twelve hours.

### Slight Accidents

A traffic accident in which all persons involved are either not detained in hospitals or detained for not more than twelve hours.

\* Transport Department criteria

## **Part A**

### **Traffic Accidents and Casualties for 2011**

Table 1 - Traffic Accidents by Police Regions

Region \ Severity	2010				2011				±% change
	Fatal	Serious	Slight	Total	Fatal	Serious	Slight	Total	
Hong Kong Island	19	437	2 546	3 002	23	399	2 619	3 041	+1%
Kowloon East	15	378	1 614	2 007	20	349	1 756	2 125	+6%
Kowloon West	27	235	3 114	3 376	30	333	3 033	3 396	+0.6%
New Territories South	24	543	2 607	3 174	16	539	2 736	3 291	+4%
New Territories North	29	459	2 896	3 384	39	570	3 079	3 688	+9%
<b>Total</b>	<b>114</b>	<b>2 052</b>	<b>12 777</b>	<b>14 943</b>	<b>128 (+12%)</b>	<b>2 190 (+7%)</b>	<b>13 223 (+3%)</b>	<b>15 541 (+4%)</b>	<b>+4%</b>

Figures in brackets denote the % change compared with last year.

Table 2 - Traffic Accidents Trends from 2007 - 2011

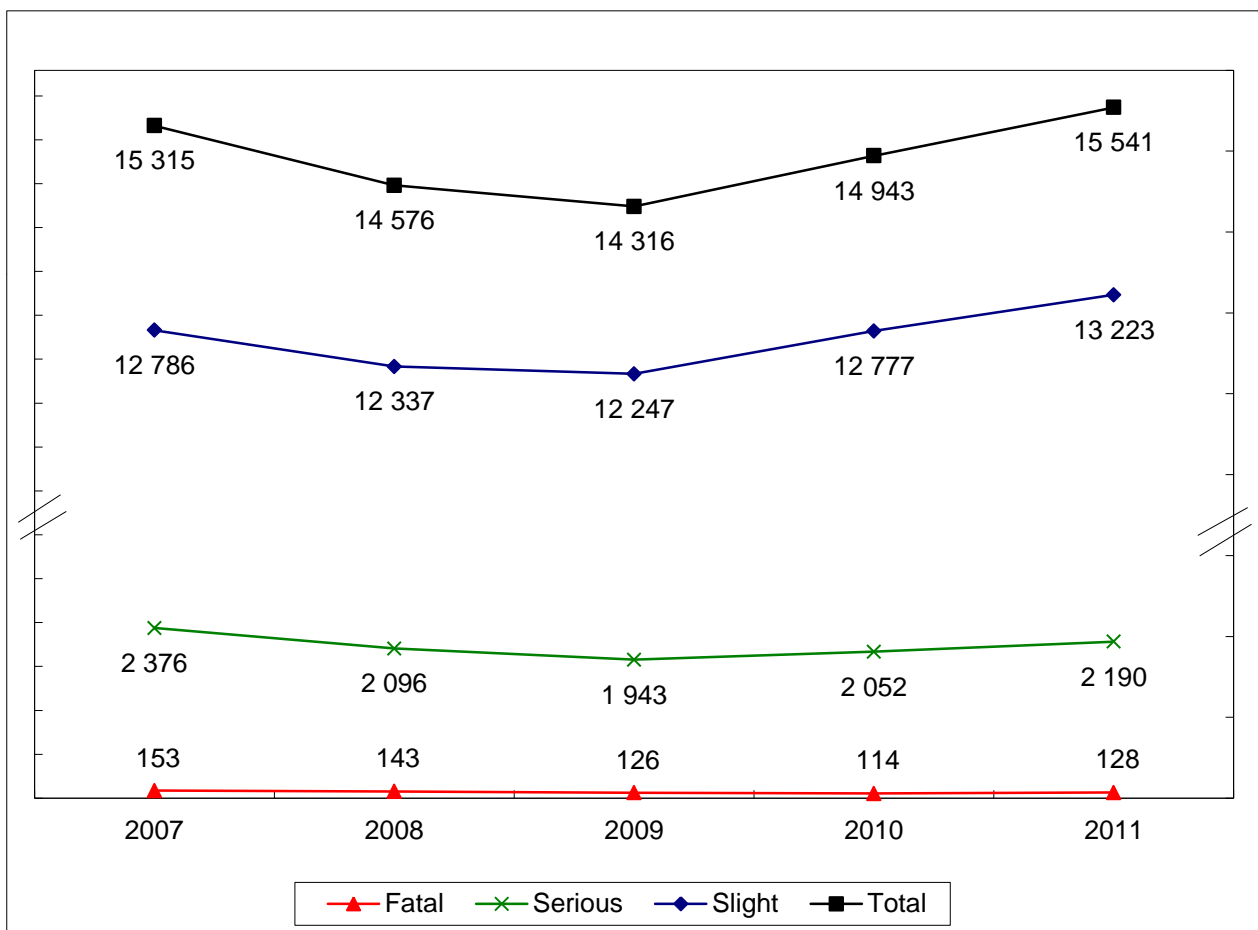


Table 3 - Monthly Figures for Traffic Accidents

Year Month \ Severity	2009				2010				2011				±% change
	Fatal	Serious	Slight	Total	Fatal	Serious	Slight	Total	Fatal	Serious	Slight	Total	
January	16	144	1 019	1 179	10	175	1 107	1 292	8	186	1 044	1 238	-4%
February	9	141	843	993	12	135	926	1 073	12	157	927	1 096	+2%
March	15	134	988	1 137	11	183	1 029	1 223	13	176	1 077	1 266	+4%
April	10	170	1 029	1 209	12	153	993	1 158	6	190	1 059	1 255	+8%
May	7	160	1 073	1 240	6	176	1 050	1 232	9	167	1 110	1 286	+4%
June	13	159	1 040	1 212	3	174	1 089	1 266	7	156	1 067	1 230	-3%
July	12	182	1 009	1 203	5	186	1 072	1 263	10	201	1 151	1 362	+8%
August	12	186	1 052	1 250	7	172	1 069	1 248	14	171	1 131	1 316	+5%
September	8	168	1 079	1 255	15	183	1 150	1 348	15	217	1 140	1 372	+2%
October	5	179	1 018	1 202	11	185	1 089	1 285	10	222	1 183	1 415	+10%
November	9	174	1 023	1 206	11	176	1 074	1 261	11	187	1 171	1 369	+9%
December	10	146	1 074	1 230	11	154	1 129	1 294	13	160	1 163	1 336	+3%
<b>Total</b>	<b>126</b>	<b>1 943</b>	<b>12 247</b>	<b>14 316</b>	<b>114</b>	<b>2 052</b>	<b>12 777</b>	<b>14 943</b>	<b>128</b>	<b>2 190</b>	<b>13 223</b>	<b>15 541</b>	<b>+4%</b>

Table 4 - Monthly Traffic Accident Trends for the past 13 months

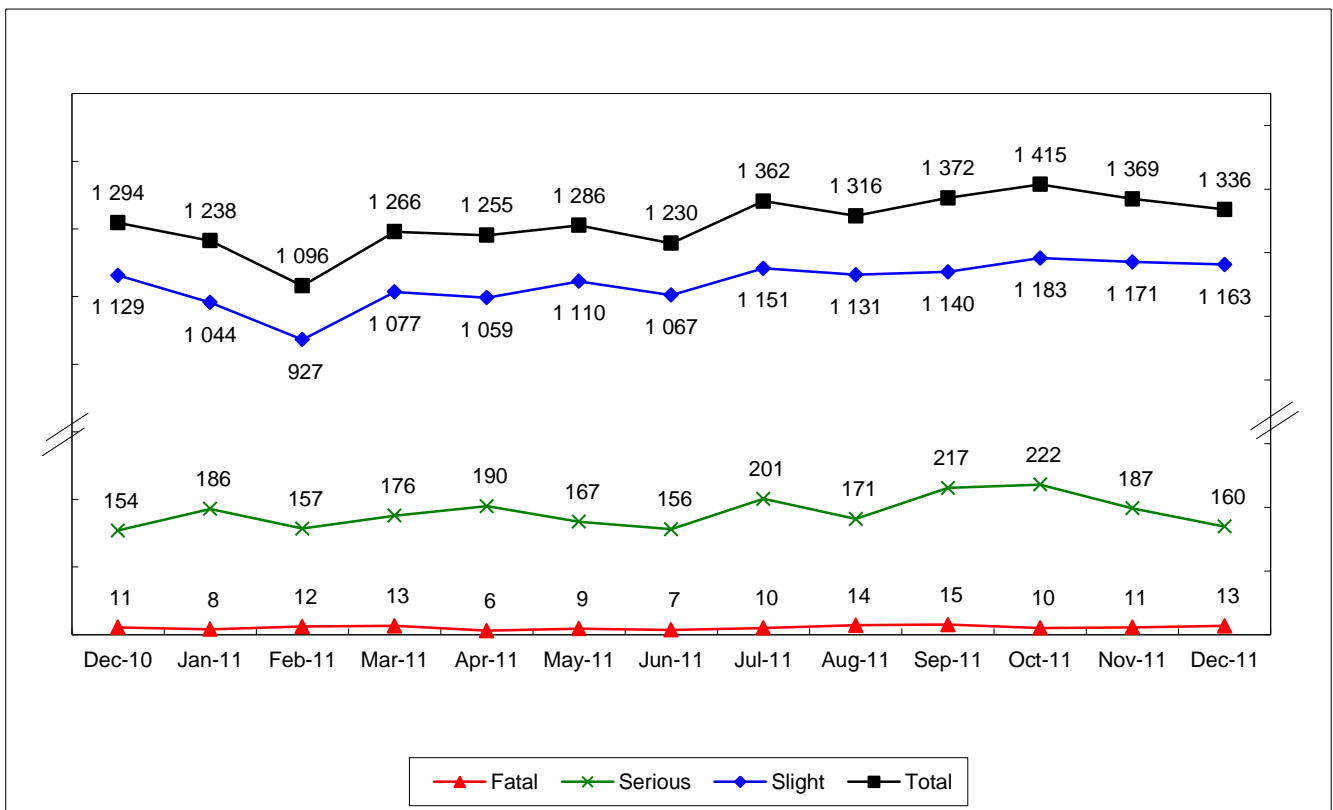


Table 5 - Traffic Accidents by Police Divisions - HKI

Division \ Severity	Year		2010				2011				±% change
	Fatal	Serious	Slight	Total	Fatal	Serious	Slight	Total			
Central #	3	58	435	496	3	51	439	493	-0.6%		
Peak	0	3	23	26	2	1	24	27	+4%		
Western	3	50	297	350	1	34	278	313	-11%		
Aberdeen	2	48	302	352	2	52	358	412	+17%		
Stanley	1	16	41	58	0	8	54	62	+7%		
Happy Valley	1	23	172	196	2	26	178	206	+5%		
Wanchai	2	56	587	645	5	68	605	678	+5%		
North Point	3	75	349	427	2	56	344	402	-6%		
Chai Wan	4	101	339	444	6	97	337	440	-0.9%		
Cheung Chau *	0	7	1	8	0	6	2	8	0%		
<b>Total</b>	<b>19</b>	<b>437</b>	<b>2 546</b>	<b>3 002</b>	<b>23</b>	<b>399</b>	<b>2 619</b>	<b>3 041</b>	<b>+1%</b>		

\* Traffic accidents on Islands less Lantau District are included in Hong Kong Island Police Region.

# Waterfront Division was amalgamated to Central Division since 2010-07-18.

Table 6 - Traffic Accidents by Police Divisions - KE

Division \ Severity	Year		2010				2011				±% change
	Fatal	Serious	Slight	Total	Fatal	Serious	Slight	Total			
Wong Tai Sin	6	91	452	549	3	96	485	584	+6%		
Sai Kung	1	22	101	124	0	36	109	145	+17%		
Kwun Tong	5	79	395	479	9	74	418	501	+5%		
Tseung Kwan O	1	84	273	358	3	65	303	371	+4%		
Ngau Tau Kok	1	41	221	263	2	40	243	285	+8%		
Sau Mau Ping	1	61	172	234	3	38	198	239	+2%		
<b>Total</b>	<b>15</b>	<b>378</b>	<b>1 614</b>	<b>2 007</b>	<b>20</b>	<b>349</b>	<b>1 756</b>	<b>2 125</b>	<b>+6%</b>		

Table 7 - Traffic Accidents by Police Divisions - KW

Division \ Severity	2010				2011				±% change
	Fatal	Serious	Slight	Total	Fatal	Serious	Slight	Total	
Yau Ma Tei	8	28	479	515	7	44	484	535	+4%
Tsim Sha Tsui	1	20	265	286	2	12	280	294	+3%
Mong Kok	6	55	628	689	7	72	588	667	-3%
Sham Shui Po	7	30	320	357	1	45	287	333	-7%
Cheung Sha Wan	2	43	493	538	6	66	496	568	+6%
Kowloon City	1	30	541	572	4	52	500	556	-3%
Hung Hom	2	29	388	419	3	42	398	443	+6%
<b>Total</b>	<b>27</b>	<b>235</b>	<b>3 114</b>	<b>3 376</b>	<b>30</b>	<b>333</b>	<b>3 033</b>	<b>3 396</b>	<b>+0.6%</b>

Table 8 - Traffic Accidents by Police Divisions - NTS

Division \ Severity	2010				2011				±% change
	Fatal	Serious	Slight	Total	Fatal	Serious	Slight	Total	
Tsuen Wan	9	157	666	832	7	165	662	834	+0.2%
Kwai Chung	3	71	309	383	1	63	305	369	-4%
Tsing Yi	3	82	304	389	1	69	341	411	+6%
Shatin	2	67	408	477	3	72	434	509	+7%
Tin Sum	2	48	257	307	2	45	261	308	+0.3%
Ma On Shan	2	60	379	441	1	73	428	502	+14%
Lantau North	2	31	148	181	1	33	186	220	+22%
Lantau South	0	6	37	43	0	8	21	29	-33%
Airport	1	21	99	121	0	11	98	109	-10%
<b>Total</b>	<b>24</b>	<b>543</b>	<b>2 607</b>	<b>3 174</b>	<b>16</b>	<b>539</b>	<b>2 736</b>	<b>3 291</b>	<b>+4%</b>

Table 9 - Traffic Accidents by Police Divisions - NTN

Division	Year Severity	2010				2011				±% change
		Fatal	Serious	Slight	Total	Fatal	Serious	Slight	Total	
Tuen Mun		5	45	279	329	5	58	257	320	-3%
Castle Peak		5	44	300	349	5	66	346	417	+19%
Tin Shui Wai		1	43	227	271	1	52	247	300	+11%
Yuen Long		1	94	466	561	8	118	564	690	+23%
Pat Heung		2	57	200	259	5	62	169	236	-9%
Tai Po		5	98	839	942	7	127	875	1 009	+7%
Sheung Shui		6	61	435	502	7	60	470	537	+7%
Lok Ma Chau		4	14	115	133	1	18	109	128	-4%
Ta Kwu Ling		0	1	19	20	0	2	19	21	+5%
Sha Tau Kok		0	2	16	18	0	7	23	30	+67%
<b>Total</b>		29	459	2 896	3 384	39	570	3 079	3 688	+9%

Table 10 - Number of Vehicles Involved in Traffic Accidents - 2010

Region	Severity	Motorcycle	Private Car	Private Light Bus	Public Light Bus (N.B. 1)	Goods Vehicle	Private Bus	Franchised Public Bus (N.B. 2)	Other Public Buses (N.B. 3)	Taxi	Tram	Bicycle	Handcart	Other Vehicles (N.B. 4)	Light Rail Transit	Total
Hong Kong Island	Fatal	3	2	0	3	6	0	2	1	3	1	1	0	0	0	22
	Serious	93	141	2	31	79	2	94	7	87	8	17	0	8	0	569
	Slight	427	1 027	21	154	461	1	485	79	975	66	42	11	30	0	3 779
	<b>Total</b>	<b>523</b>	<b>1 170</b>	<b>23</b>	<b>188</b>	<b>546</b>	<b>3</b>	<b>581</b>	<b>87</b>	<b>1 065</b>	<b>75</b>	<b>60</b>	<b>11</b>	<b>38</b>	<b>0</b>	<b>4 370</b>
Kowloon East	Fatal	1	3	0	4	8	0	1	1	2	0	0	0	3	0	23
	Serious	102	117	7	48	107	0	43	9	86	0	18	1	5	0	543
	Slight	391	730	16	225	444	1	221	42	443	0	39	1	13	0	2 566
	<b>Total</b>	<b>494</b>	<b>850</b>	<b>23</b>	<b>277</b>	<b>559</b>	<b>1</b>	<b>265</b>	<b>52</b>	<b>531</b>	<b>0</b>	<b>57</b>	<b>2</b>	<b>21</b>	<b>0</b>	<b>3 132</b>
Kowloon West	Fatal	2	8	0	6	7	0	4	2	4	0	1	0	0	0	34
	Serious	47	77	2	13	74	0	23	7	67	0	8	1	3	0	322
	Slight	484	1 512	8	257	721	3	549	96	1 106	0	79	11	36	0	4 862
	<b>Total</b>	<b>533</b>	<b>1 597</b>	<b>10</b>	<b>276</b>	<b>802</b>	<b>3</b>	<b>576</b>	<b>105</b>	<b>1 177</b>	<b>0</b>	<b>88</b>	<b>12</b>	<b>39</b>	<b>0</b>	<b>5 218</b>
NT South	Fatal	3	7	0	3	13	0	0	7	8	0	2	0	1	0	44
	Serious	110	171	4	29	173	0	50	18	110	0	110	1	13	0	789
	Slight	372	992	11	185	774	4	294	88	477	0	621	1	81	1	3 901
	<b>Total</b>	<b>485</b>	<b>1 170</b>	<b>15</b>	<b>217</b>	<b>960</b>	<b>4</b>	<b>344</b>	<b>113</b>	<b>595</b>	<b>0</b>	<b>733</b>	<b>2</b>	<b>95</b>	<b>1</b>	<b>4 734</b>
NT North	Fatal	4	5	0	7	11	0	1	0	5	0	8	0	0	1	42
	Serious	101	156	5	24	131	0	33	16	93	0	113	0	11	7	690
	Slight	288	1 307	13	157	753	2	173	96	587	0	968	2	64	6	4 416
	<b>Total</b>	<b>393</b>	<b>1 468</b>	<b>18</b>	<b>188</b>	<b>895</b>	<b>2</b>	<b>207</b>	<b>112</b>	<b>685</b>	<b>0</b>	<b>1 089</b>	<b>2</b>	<b>75</b>	<b>14</b>	<b>5 148</b>
Total	Fatal	13	25	0	23	45	0	8	11	22	1	12	0	4	1	165
	Serious	453	662	20	145	564	2	243	57	443	8	266	3	40	7	2 913
	Slight	1 962	5 568	69	978	3 153	11	1 722	401	3 588	66	1 749	26	224	7	19 524
	<b>Total</b>	<b>2 428</b>	<b>6 255</b>	<b>89</b>	<b>1 146</b>	<b>3 762</b>	<b>13</b>	<b>1 973</b>	<b>469</b>	<b>4 053</b>	<b>75</b>	<b>2 027</b>	<b>29</b>	<b>268</b>	<b>15</b>	<b>22 602</b>
<b>% share</b>		11%	28%	0.4%	5%	17%	0.1%	9%	2%	18%	0.3%	9%	0.1%	1%	0.1%	100%
<b>Accident rate per 1 000 licensed vehicles</b>		64	16	44	264	34	26	342	67	224	← N.A. →					34

N.B.

1. : Including franchised mini bus
2. : Kowloon Motor Bus, Franchised City Bus, New Lantau Bus, New World First Bus, Long Win Bus and unconfirmed franchised bus.
3. : Other Public Buses' include non-franchised Public Bus and MTR Bus.
4. : Other vehicles' include trailer, village vehicle, unknown vehicle and other vehicles.



Table 11 - Number of Vehicles Involved in Traffic Accidents - 2011

Region	Severity	Motorcycle	Private Car	Private Light Bus	Public Light Bus (N.B. 1)	Goods Vehicle	Private Bus	Franchised Public Bus (N.B. 2)	Other Public Buses (N.B. 3)	Taxi	Tram	Bicycle	Handcart	Other Vehicles (N.B. 4)	Light Rail Transit	Total
Hong Kong Island	Fatal	0	4	0	2	7	0	4	1	5	1	1	0	1	0	26
	Serious	79	121	1	27	68	1	70	16	130	8	19	0	8	0	548
	Slight	416	1 110	22	184	467	0	568	66	979	50	43	6	26	0	3 937
	<b>Total</b>	495	1 235	23	213	542	1	642	83	1 114	59	63	6	35	0	4 511
Kowloon East	Fatal	3	2	0	4	7	0	4	0	1	0	2	0	0	0	23
	Serious	87	135	3	26	94	0	41	3	72	0	26	2	7	0	496
	Slight	392	848	18	218	528	0	257	55	502	0	52	2	22	0	2 894
	<b>Total</b>	482	985	21	248	629	0	302	58	575	0	80	4	29	0	3 413
Kowloon West	Fatal	0	4	0	2	17	1	2	2	5	0	3	0	0	0	36
	Serious	57	102	0	35	63	0	53	10	95	0	10	0	4	0	429
	Slight	460	1 508	17	225	734	8	533	81	1 168	0	93	12	35	0	4 874
	<b>Total</b>	517	1 614	17	262	814	9	588	93	1 268	0	106	12	39	0	5 339
NT South	Fatal	3	3	0	6	5	0	2	1	0	0	2	0	0	0	22
	Serious	95	157	4	43	162	1	48	15	103	0	119	1	20	0	768
	Slight	355	1 021	13	181	767	7	323	102	552	0	753	2	65	0	4 141
	<b>Total</b>	453	1 181	17	230	934	8	373	118	655	0	874	3	85	0	4 931
NT North	Fatal	5	11	0	4	20	0	3	3	8	0	12	0	2	1	69
	Serious	94	206	2	30	150	0	39	18	94	0	180	1	7	3	824
	Slight	282	1 359	11	155	744	4	190	119	545	0	1 185	3	42	7	4 646
	<b>Total</b>	381	1 576	13	189	914	4	232	140	647	0	1 377	4	51	11	5 539
Total	Fatal	11	24	0	18	56	1	15	7	19	1	20	0	3	1	176
	Serious	412	721	10	161	537	2	251	62	494	8	354	4	46	3	3 065
	Slight	1 905	5 846	81	963	3 240	19	1 871	423	3 746	50	2 126	25	190	7	20 492
	<b>Total</b>	2 328	6 591	91	1 142	3 833	22	2 137	492	4 259	59	2 500	29	239	11	23 733
<b>% share</b>		10%	28%	0.4%	5%	16%	0.1%	9%	2%	18%	0.2%	11%	0.1%	1%	0.05%	100%
<b>Accident rate per 1 000 licensed vehicles</b>		61	16	43	263	34	45	372	70	235	← N.A. →					34

N.B.

1. : Including franchised mini bus
2. : Kowloon Motor Bus, Franchised City Bus, New Lantau Bus, New World First Bus, Long Win Bus and unconfirmed franchised bus.
3. : Other Public Buses' include non-franchised Public Bus and MTR Bus.
4. : Other vehicles' include trailer, village vehicle, unknown vehicle and other vehicles.

**Table 12 - Average Traffic Accidents by Hour of the Day**

Hour	Region	2010					2011					±% change		
		HKI	KE	KW	NTS	NTN	Total	HKI	KE	KW	NTS		NTN	Total
0001-0100		0.15	0.13	0.22	0.22	0.24	0.97	0.15	0.11	0.32	0.24	0.24	1.05	+8%
0101-0200		0.14	0.10	0.16	0.19	0.17	0.77	0.09	0.13	0.14	0.15	0.19	0.70	-9%
0201-0300		0.09	0.06	0.15	0.10	0.12	0.52	0.09	0.07	0.13	0.13	0.12	0.54	+4%
0301-0400		0.05	0.07	0.08	0.07	0.09	0.37	0.08	0.04	0.15	0.11	0.13	0.51	+38%
0401-0500		0.05	0.05	0.13	0.07	0.09	0.39	0.06	0.04	0.11	0.08	0.09	0.38	-3%
0501-0600		0.08	0.06	0.14	0.09	0.09	0.45	0.08	0.06	0.16	0.09	0.10	0.49	+9%
0601-0700		0.16	0.12	0.19	0.16	0.12	0.75	0.13	0.10	0.19	0.16	0.14	0.72	-4%
0701-0800		0.33	0.27	0.37	0.33	0.47	1.77	0.34	0.26	0.31	0.39	0.40	1.71	-3%
0801-0900		0.46	0.39	0.48	0.59	0.49	2.41	0.47	0.49	0.47	0.48	0.51	2.43	+0.8%
0901-1000		0.47	0.40	0.52	0.45	0.41	2.26	0.45	0.37	0.48	0.41	0.44	2.15	-5%
1001-1100		0.43	0.30	0.47	0.47	0.45	2.13	0.47	0.26	0.49	0.48	0.50	2.20	+3%
1101-1200		0.45	0.28	0.44	0.47	0.42	2.05	0.59	0.26	0.50	0.47	0.52	2.33	+14%
1201-1300		0.50	0.28	0.51	0.50	0.57	2.36	0.53	0.27	0.49	0.50	0.57	2.36	0%
1301-1400		0.48	0.29	0.55	0.52	0.58	2.43	0.60	0.30	0.53	0.52	0.59	2.54	+5%
1401-1500		0.47	0.30	0.59	0.57	0.56	2.49	0.50	0.33	0.53	0.62	0.56	2.55	+2%
1501-1600		0.57	0.35	0.61	0.63	0.67	2.82	0.58	0.33	0.55	0.60	0.72	2.78	-1%
1601-1700		0.58	0.30	0.52	0.56	0.73	2.69	0.56	0.31	0.59	0.64	0.77	2.87	+7%
1701-1800		0.60	0.31	0.55	0.55	0.64	2.65	0.44	0.45	0.53	0.61	0.81	2.84	+7%
1801-1900		0.53	0.35	0.62	0.60	0.63	2.73	0.53	0.47	0.62	0.68	0.72	3.02	+11%
1901-2000		0.44	0.28	0.56	0.40	0.48	2.16	0.48	0.32	0.56	0.38	0.52	2.26	+5%
2001-2100		0.35	0.22	0.38	0.30	0.33	1.58	0.35	0.19	0.39	0.35	0.33	1.61	+2%
2101-2200		0.27	0.23	0.36	0.33	0.29	1.48	0.32	0.21	0.33	0.35	0.43	1.65	+11%
2201-2300		0.30	0.18	0.35	0.26	0.32	1.41	0.25	0.26	0.39	0.33	0.40	1.63	+16%
2301-2400		0.27	0.16	0.30	0.27	0.29	1.29	0.18	0.20	0.35	0.26	0.29	1.27	-2%

**Table 13 - Average Traffic Accidents by Day of the Week**

Year		2010					2011					±% change		
Day	Region	HKI	KE	KW	NTS	NTN	Total	HKI	KE	KW	NTS		NTN	Total
	<b>Sun</b>	6.73	4.96	8.23	8.88	10.87	39.67	7.06	4.83	8.44	10.42	11.98	42.73	+8%
	<b>Mon</b>	8.54	5.77	9.50	7.77	8.63	40.21	8.31	5.40	8.81	8.71	9.62	40.85	+2%
	<b>Tue</b>	8.06	5.60	8.71	8.48	8.54	39.38	8.40	6.75	8.52	8.27	8.81	40.75	+3%
	<b>Wed</b>	8.31	5.67	9.33	8.04	8.67	40.02	7.94	5.87	9.17	8.17	9.13	40.29	+0.7%
	<b>Thu</b>	8.73	5.42	9.48	9.00	8.40	41.04	8.81	5.83	9.52	8.54	8.63	41.33	+0.7%
	<b>Fri</b>	8.70	5.58	10.06	8.45	9.21	42.00	9.27	5.83	10.12	8.92	10.15	44.29	+5%
	<b>Sat</b>	8.50	5.48	9.42	10.25	10.58	44.23	8.53	6.25	10.53	10.06	12.36	47.72	+8%

**Table 14 - Major Driver Contributory Factors of Accidents**

Factors	2010	2011	±% change
1. Driving inattentively	3 077 ( 2 974 )	3 487 ( 3 369 )	+13% +13%
2. Driving too close to vehicle in front	1 802 ( 1 522 )	1 567 ( 1 350 )	-13% -11%
3. Losing control of vehicle	1 114 ( 1 109 )	1 330 ( 1 321 )	+19% +19%
4. Careless lane changing	1 013 ( 992 )	995 ( 978 )	-2% -1%
5. Careless cycling	819 ( 814 )	900 ( 891 )	+10% +9%
6. Improper or illegal turn	604 ( 598 )	619 ( 615 )	+2% +3%
7. Reversing negligently	295 ( 295 )	304 ( 304 )	+3% +3%
8. Failing to ensure the safety of passenger	226 ( 225 )	246 ( 246 )	+9% +9%
9. Starting negligently	271 ( 268 )	203 ( 203 )	-25% -24%
10. Disobeying traffic signal	219 ( 206 )	192 ( 185 )	-12% -10%

Figures on top are the number of drivers and figures in brackets denote the number of traffic accidents involved.

**Table 15 - Comparison of Major Driver Contributory Factors of Accidents**

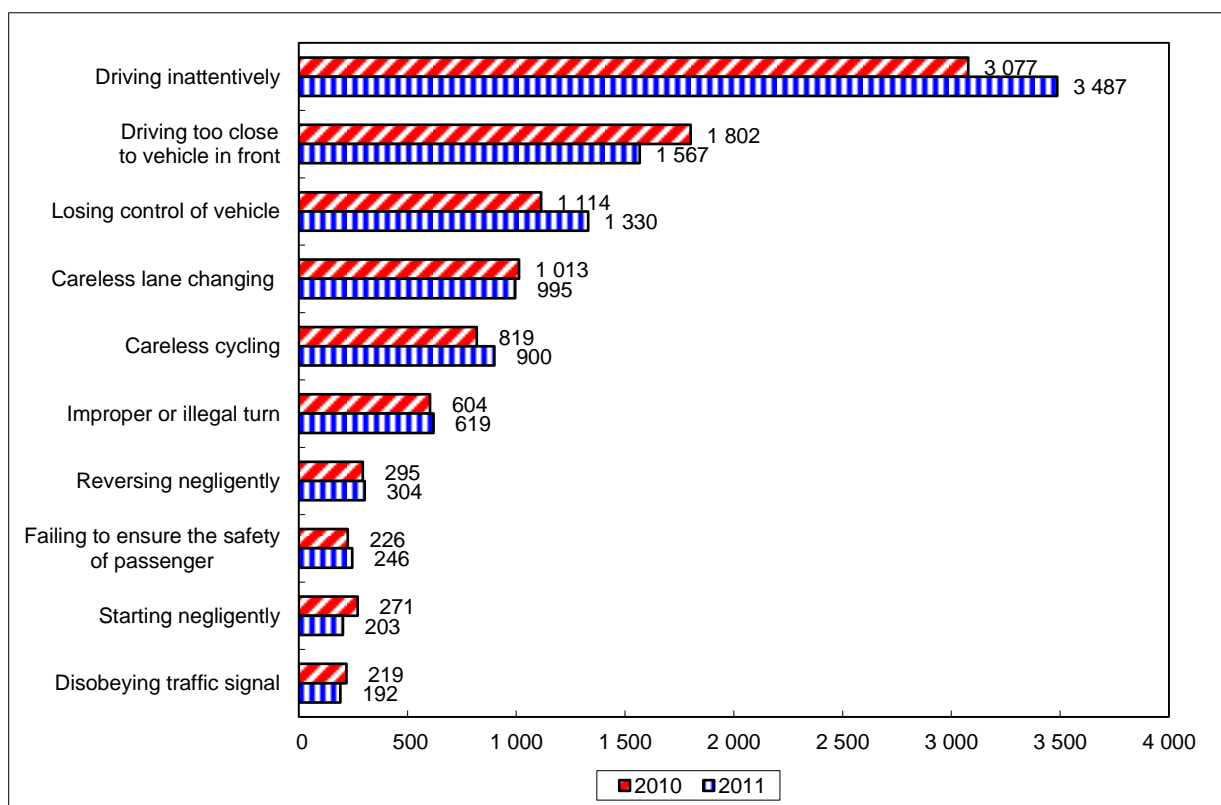


Table 16 - Bicycle Accidents by Police Regions

Year	2010									2011									±% change
Region	On Cycle track				On Road				Grand Total	On Cycle track				On Road				Grand Total	
	Fatal	Serious	Slight	Total	Fatal	Serious	Slight	Total		Fatal	Serious	Slight	Total	Fatal	Serious	Slight	Total		
HKI	0	0	0	0	1	17	41	59	59	0	0	0	0	1	16	43	60	60	+2%
KE	0	1	3	4	0	16	33	49	53	0	3	7	10	2	20	40	62	72	+36%
KW	0	0	0	0	1	8	79	88	88	0	0	1	1	3	10	87	100	101	+15%
NTS	0	22	168	190	1	76	414	491	681	0	32	270	302	2	78	439	519	821	+21%
NTN	0	21	194	215	8	86	724	818	1 033	0	34	298	332	12	133	817	962	1 294	+25%
<b>Total</b>	<b>0</b>	<b>44</b>	<b>365</b>	<b>409</b>	<b>11</b>	<b>203</b>	<b>1 291</b>	<b>1 505</b>	<b>1 914</b>	<b>0</b>	<b>69</b>	<b>576</b>	<b>645</b>	<b>20</b>	<b>257</b>	<b>1 426</b>	<b>1 703</b>	<b>2 348</b>	<b>+23%</b>

Table 17 - Comparison of Bicycle Accidents by Police Districts

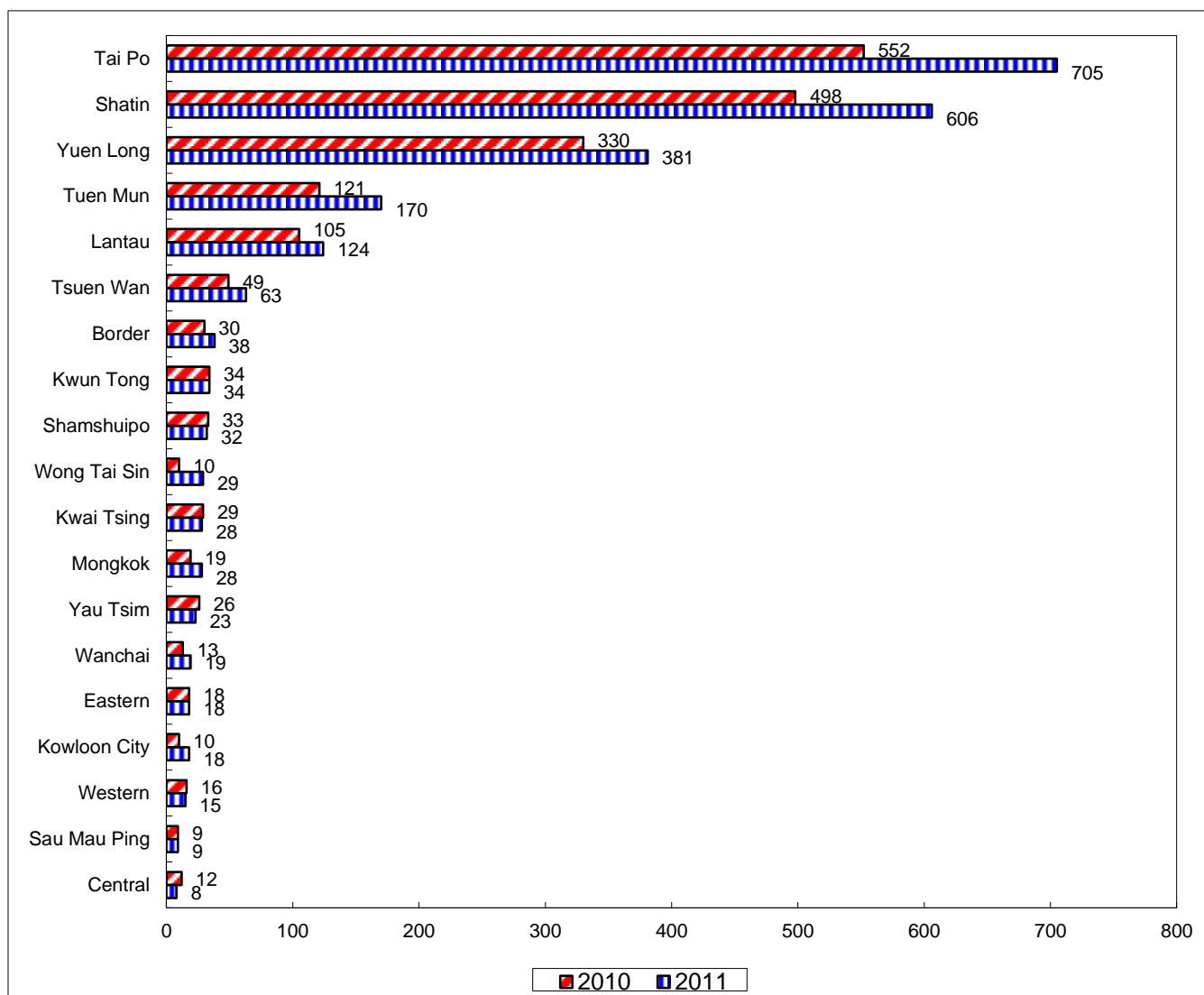


Table 18 - Traffic Accidents on Expressways

Expressway	2010				2011				±% change
	Fatal	Serious	Slight	Total	Fatal	Serious	Slight	Total	
Sha Tin Road	0	1	8	9	0	1	5	6	-33%
Tolo Highway	2	14	116	132	2	23	118	143	+8%
Fanling Highway	1	8	66	75	0	10	70	80	+7%
San Tin Highway	0	10	30	40	0	5	23	28	-30%
Yuen Long Highway	0	14	37	51	3	9	34	46	-10%
Tuen Mun Road	1	38	174	213	1	38	206	245	+15%
Tsuen Wan Road	0	5	45	50	0	8	41	49	-2%
Tai Po Road - Sha Tin *	0	3	15	18	0	4	12	16	-11%
Tate's Cairn Highway	0	4	21	25	1	1	13	15	-40%
Kwun Tong Bypass	1	13	54	68	0	14	43	57	-16%
Island Eastern Corridor	0	16	101	117	0	13	80	93	-21%
North Lantau Highway	1	12	38	51	0	11	39	50	-2%
Tsing Kwai Highway	0	5	21	26	0	2	24	26	0%
West Kowloon Expressway	1	4	29	34	1	2	22	25	-26%
Cheung Tsing Highway	0	6	15	21	0	1	11	12	-43%
Tsing Long Highway	2	8	29	39	0	8	27	35	-10%
<b>Total</b>	<b>9</b>	<b>161</b>	<b>799</b>	<b>969</b>	<b>8</b>	<b>150</b>	<b>768</b>	<b>926</b>	<b>-4%</b>

\* Section between Sha Tin Racecourse and HK Institute of Vocational Ed. (VTC) - Sha Tin.

**Table 19 - Major Driver Contributory Factors of Expressway Accidents**

Factors	2010	2011	±% change
1. Driving inattentively	213 ( 200 )	269 ( 243 )	+26% +22%
2. Driving too close to vehicle in front	282 ( 239 )	241 ( 210 )	-15% -12%
3. Careless lane changing	117 ( 116 )	130 ( 126 )	+11% +9%
4. Losing control of vehicle	80 ( 80 )	82 ( 82 )	+3% +3%
5. Asleep or drowsy	17 ( 17 )	14 ( 14 )	-18% -18%
6. Consumption of alcohol	9 ( 8 )	9 ( 9 )	0% +13%
7. Emerging from side road negligently	0 ( 0 )	7 ( 7 )	N.A. N.A.
8. Driving too close to kerb	8 ( 7 )	6 ( 6 )	-25% -14%
9. Driving too close to vehicle alongside	11 ( 11 )	5 ( 4 )	-55% -64%
10. Speeding	9 ( 8 )	3 ( 3 )	-67% -63%

Figures on top are the number of drivers and figures in brackets denote the number of traffic accidents involved.

**Table 20 - Comparison of Major Driver Contributory Factors of Expressway Accidents**

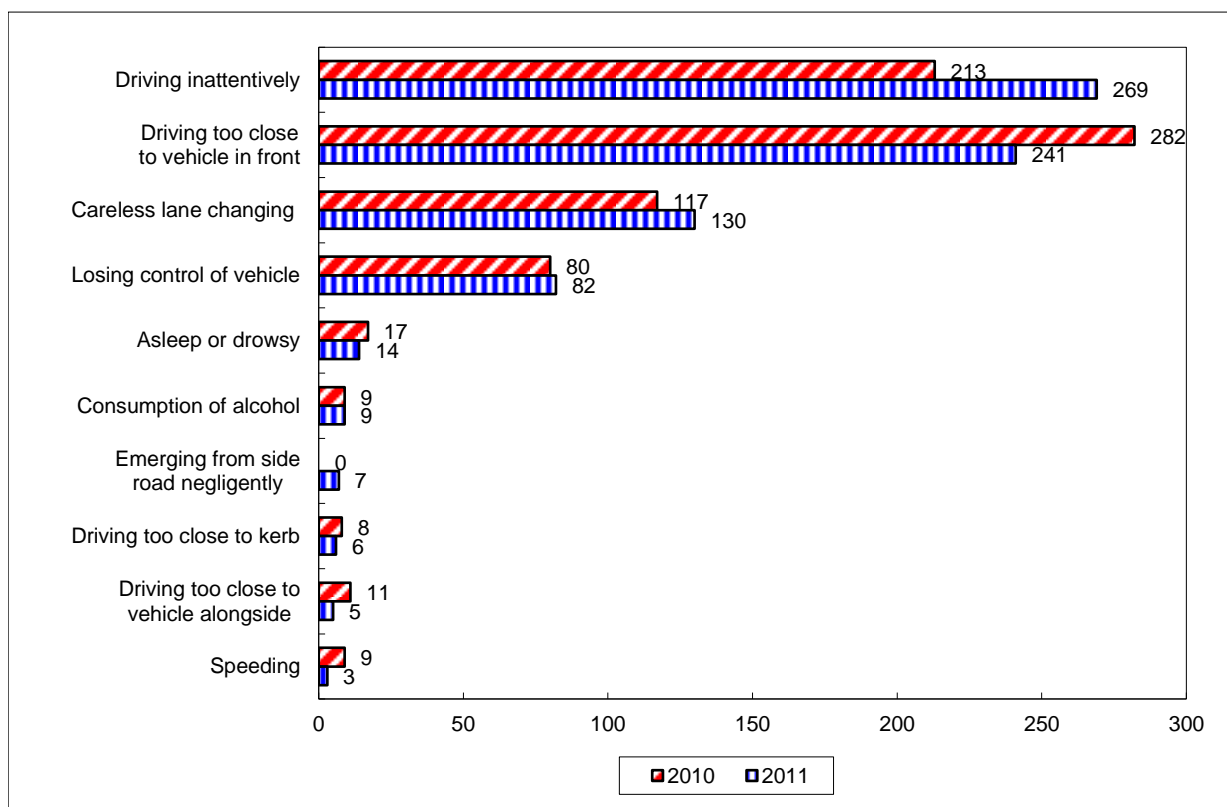


Table 21 - Top 20 Traffic Accident Blacksites in 2011\*

No.	Location	Number of Traffic Accidents	Police Region
1	Ma Tau Chung Road / Sung Wong Toi Road / Fu Ning Street	20	Kowloon West
2	Mong Kok Road / Nathan Road	19	Kowloon West
3	Argyle Street / Nathan Road	18	Kowloon West
4	Chatham Road South / Austin Road / Cheong Wan Road	18	Kowloon West
5	Cheung Sha Wan Road / Tonkin Street	16	Kowloon West
6	Kwun Tong Road / Hong Ning Road	16	Kowloon East
7	Argyle Street / Sai Yee Street	16	Kowloon East
8	Waterloo Road / Nathan Road	16	Kowloon West
9	Tsuen Tsing Interchange / Tsuen Wan Road	15	New Territories South
10	Argyle Street / Lomond Road	14	Kowloon West
11	Yen Chow Street / Cheung Sha Wan Road	14	Kowloon West
12	Canton Road / Jordan Road / Ferry Street	14	Kowloon East
13	Connaught Road Central / Pedder Street / Connaught Place	14	Hong Kong Island
14	Argyles Street / Tong Mi Road / Cherry Street	13	Kowloon East
15	Nathan Road / Dundas Street	13	Kowloon West
16	Nathan Road / Jordan Road	13	Kowloon West
17	Ma Tau Kok Road / Ma Tau Chung Road	12	Kowloon West
18	Connaught Road Central / Hillier Street	12	Hong Kong Island
19	Nathan Road / Gascoigne Road / Kansu Street	12	Kowloon East
20	Yim Po Fong Street / Waterloo Road / Wylie Road	12	Kowloon West

\* Source: Transport Department



Table 22 - Traffic Casualties by Police Regions

Region \ Severity	2010				2011				±% change
	Fatal	Serious	Slight	Total	Fatal	Serious	Slight	Total	
Hong Kong Island	19	444	3 289	3 752	23	413	3 275	3 711	-1%
Kowloon East	15	397	2 268	2 680	20	375	2 422	2 817	+5%
Kowloon West	28	243	3 880	4 151	30	347	3 835	4 212	+1%
New Territories South	26	595	3 542	4 163	16	579	3 749	4 344	+4%
New Territories North	29	481	3 868	4 378	41	612	4 066	4 719	+8%
<b>Total</b>	<b>117</b>	<b>2 160</b>	<b>16 847</b>	<b>19 124</b>	<b>130</b> (+11%)	<b>2 326</b> (+8%)	<b>17 347</b> (+3%)	<b>19 803</b> (+4%)	<b>+4%</b>

Figures in brackets denote the % change compared with last year.

Table 23 - Traffic Casualties Trends from 2007-2011

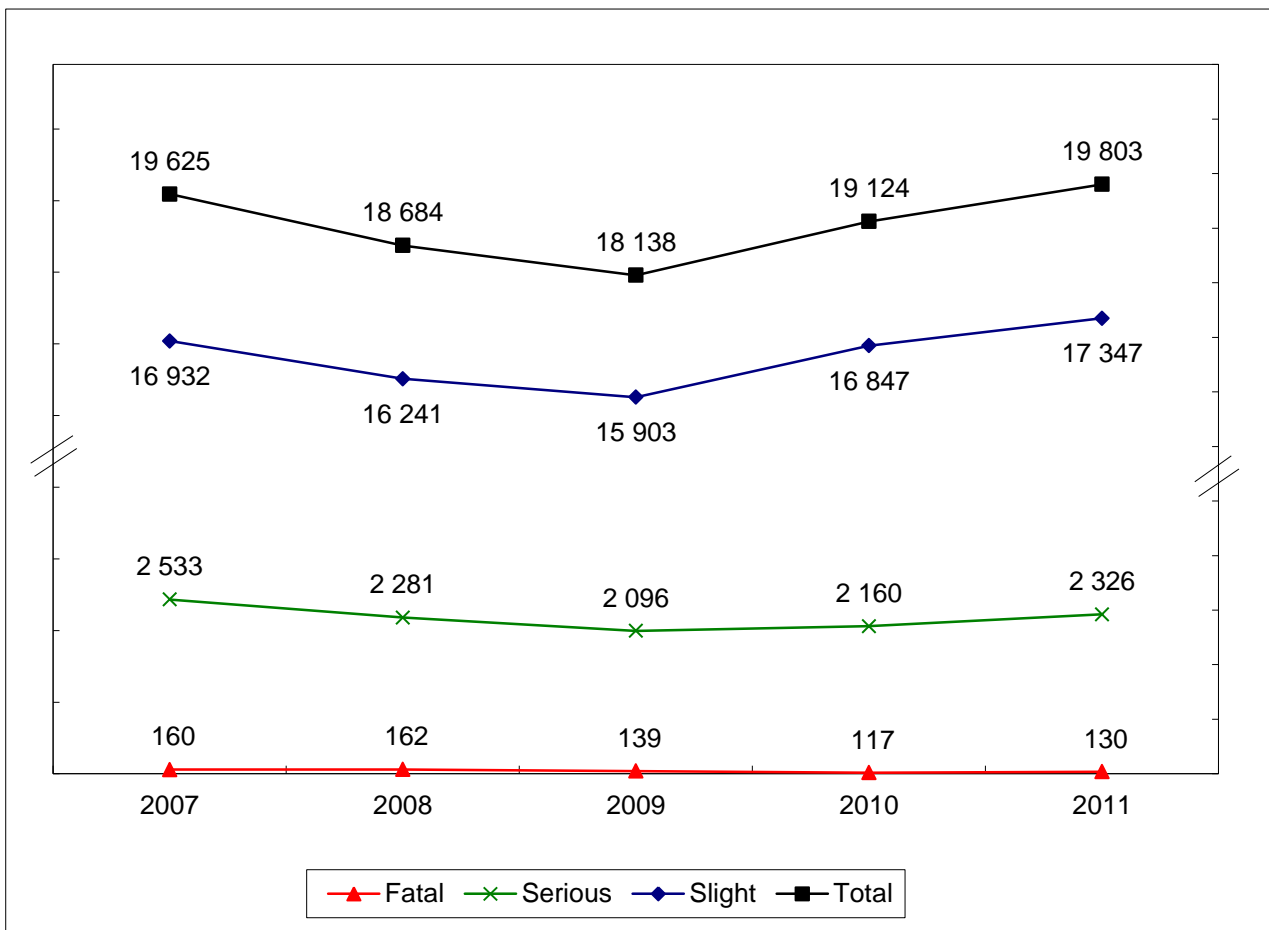


Table 24 - Monthly Figures for Traffic Casualties

Year \ Month	2009				2010				2011				±% change
	Fatal	Serious	Slight	Total	Fatal	Serious	Slight	Total	Fatal	Serious	Slight	Total	
January	22	158	1 305	1 485	10	185	1 421	1 616	8	193	1 341	1 542	-5%
February	9	145	1 101	1 255	13	146	1 245	1 404	12	161	1 214	1 387	-1%
March	15	143	1 240	1 398	11	191	1 385	1 587	13	194	1 387	1 594	+0.4%
April	10	178	1 345	1 533	12	157	1 306	1 475	6	200	1 392	1 598	+8%
May	7	174	1 399	1 580	6	185	1 452	1 643	9	180	1 438	1 627	-1%
June	14	171	1 361	1 546	4	181	1 442	1 627	7	165	1 473	1 645	+1%
July	15	203	1 348	1 566	5	198	1 381	1 584	10	221	1 494	1 725	+9%
August	14	196	1 372	1 582	7	184	1 471	1 662	14	174	1 458	1 646	-1%
September	8	179	1 418	1 605	15	194	1 508	1 717	15	232	1 554	1 801	+5%
October	5	188	1 279	1 472	12	196	1 383	1 591	10	234	1 591	1 835	+15%
November	10	202	1 332	1 544	11	182	1 369	1 562	11	194	1 520	1 725	+10%
December	10	159	1 403	1 572	11	161	1 484	1 656	15	178	1 485	1 678	+1%
<b>Total</b>	<b>139</b>	<b>2 096</b>	<b>15 903</b>	<b>18 138</b>	<b>117</b>	<b>2 160</b>	<b>16 847</b>	<b>19 124</b>	<b>130</b>	<b>2 326</b>	<b>17 347</b>	<b>19 803</b>	<b>+4%</b>

Table 25 - Monthly Traffic Casualties Trends for the past 13 months

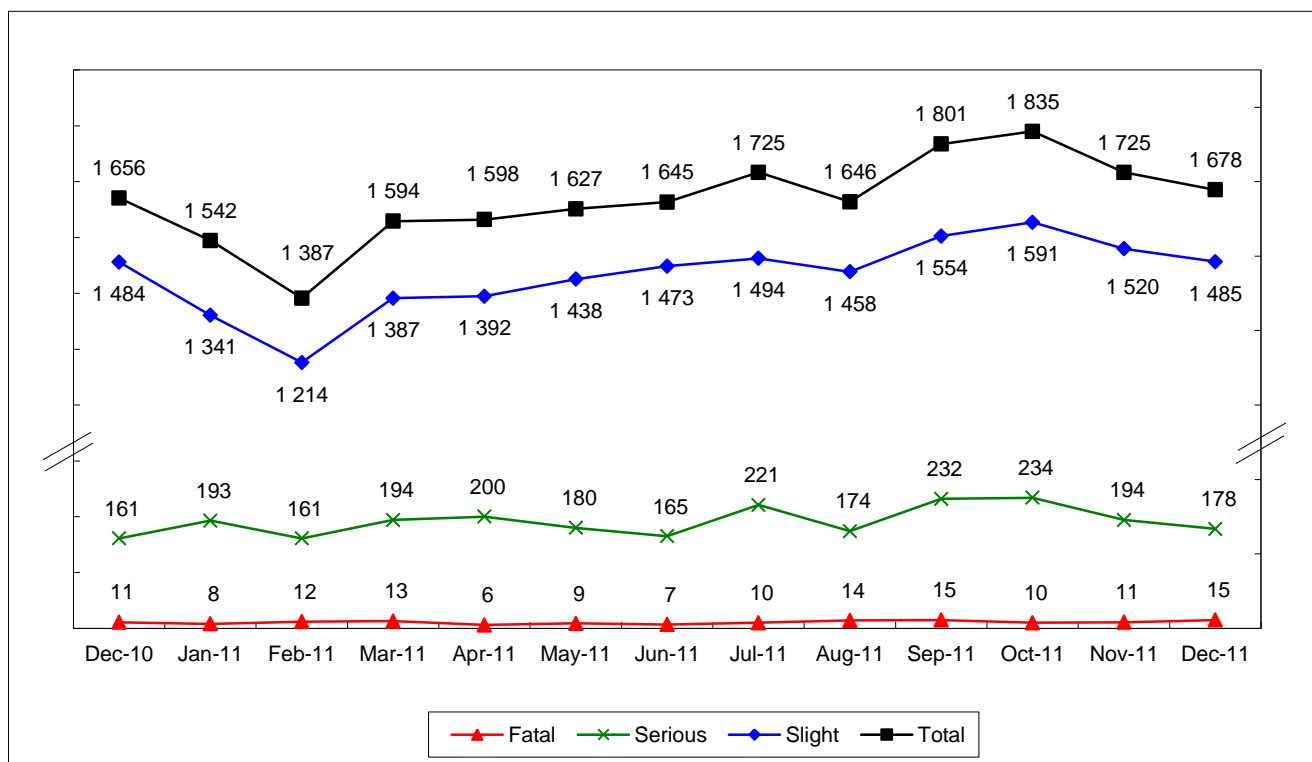


Table 26 - Traffic Casualties by Class of Road User

Class \ Severity	2010						2011						±% change
	Fatal	% share	Serious	Slight	Total	% share	Fatal	% share	Serious	Slight	Total	% share	
Driver	16	14%	362	4 360	4 738	25%	17	13%	417	4 577	5 011	25%	+6%
Motor-cyclist	11	9%	394	1 819	2 224	12%	11	8%	353	1 782	2 146	11%	-4%
Cyclist	10	9%	229	1 529	1 768	9%	19	15%	303	1 872	2 194	11%	+24%
Pedestrian	69	59%	744	3 085	3 898	20%	72	55%	791	2 977	3 840	19%	-1%
Passenger	11	9%	431	6 054	6 496	34%	11	8%	462	6 139	6 612	33%	+2%
<b>Total</b>	<b>117</b>		<b>2 160</b>	<b>16 847</b>	<b>19 124</b>		<b>130</b>		<b>2 326</b>	<b>17 347</b>	<b>19 803</b>		<b>+4%</b>

Table 27 - Comparison of Traffic Casualties by Class of Road User

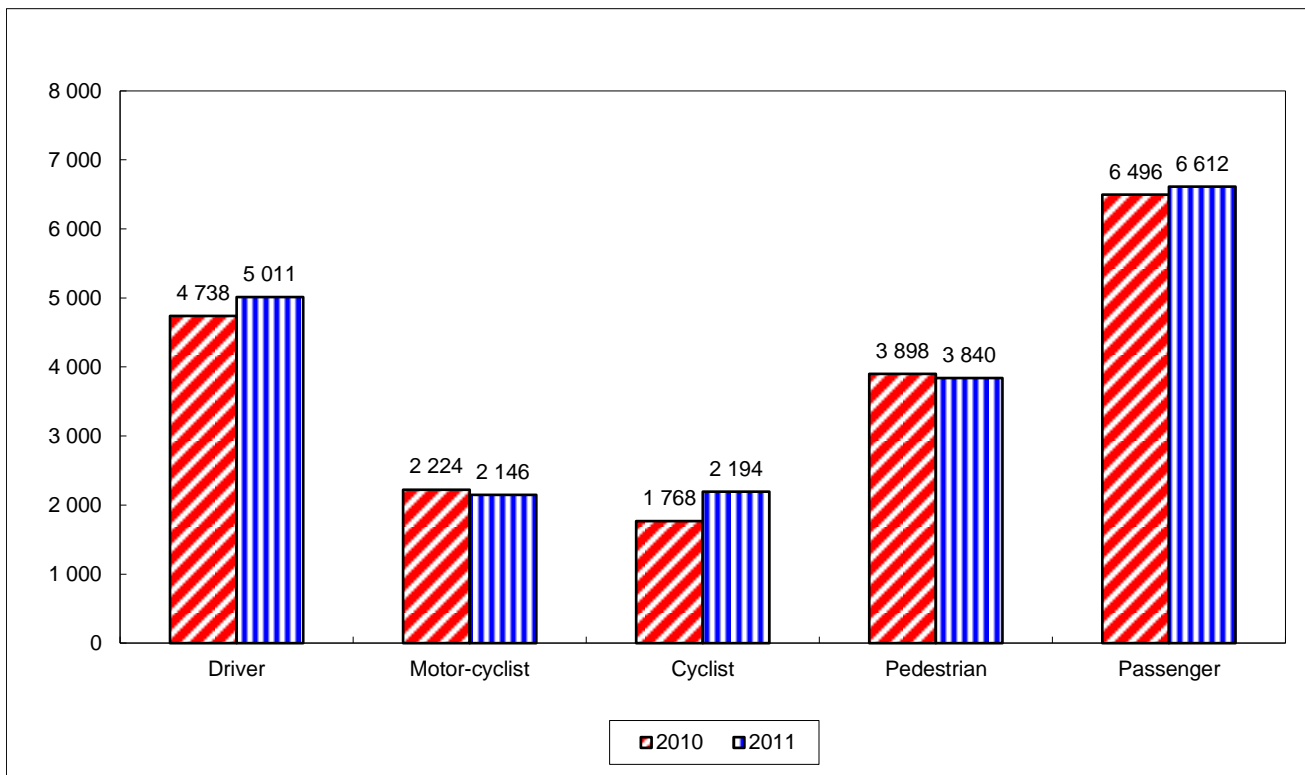
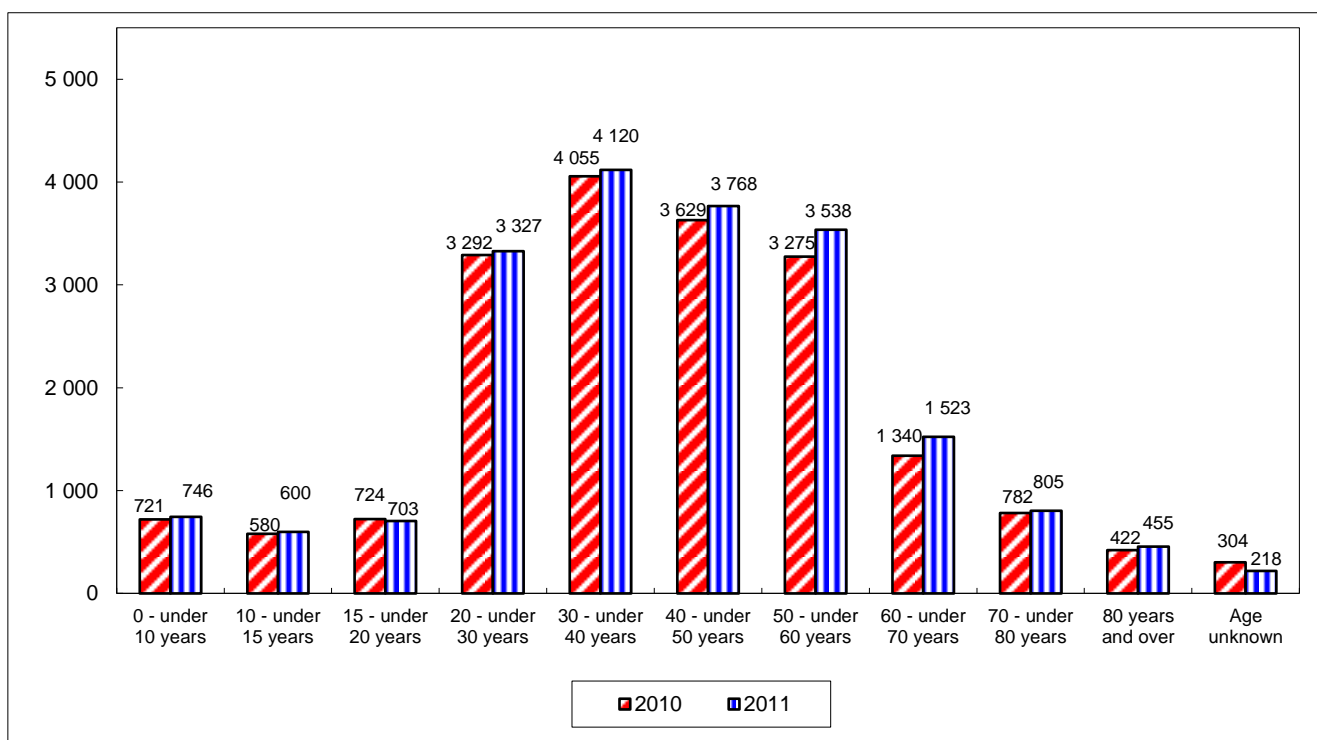


Table 28 - Traffic Casualties by Age Group

Year \ Age \ Severity	2010						2011						±% change
	Fatal	% share	Serious	Slight	Total	% share	Fatal	% share	Serious	Slight	Total	% share	
0 - under 10 years	3	3%	38	680	721	4%	0	0%	41	705	746	4%	+3%
10 - under 15 years	1	0.9%	63	516	580	3%	1	0.8%	72	527	600	3%	+3%
15 - under 20 years	0	0%	73	651	724	4%	0	0%	81	622	703	4%	-3%
20 - under 30 years	11	9%	334	2 947	3 292	17%	12	9%	354	2 961	3 327	17%	+1%
30 - under 40 years	12	10%	385	3 658	4 055	21%	9	7%	389	3 722	4 120	21%	+2%
40 - under 50 years	14	12%	391	3 224	3 629	19%	16	12%	407	3 345	3 768	19%	+4%
50 - under 60 years	19	16%	372	2 884	3 275	17%	24	18%	427	3 087	3 538	18%	+8%
60 - under 70 years	13	11%	198	1 129	1 340	7%	19	15%	210	1 294	1 523	8%	+14%
70 - under 80 years	22	19%	158	602	782	4%	25	19%	175	605	805	4%	+3%
80 years and over	22	19%	115	285	422	2%	24	18%	145	286	455	2%	+8%
Age unknown	0	0%	33	271	304	2%	0	0%	25	193	218	1%	-28%
<b>Total</b>	<b>117</b>		<b>2 160</b>	<b>16 847</b>	<b>19 124</b>		<b>130</b>		<b>2 326</b>	<b>17 347</b>	<b>19 803</b>		<b>+4%</b>

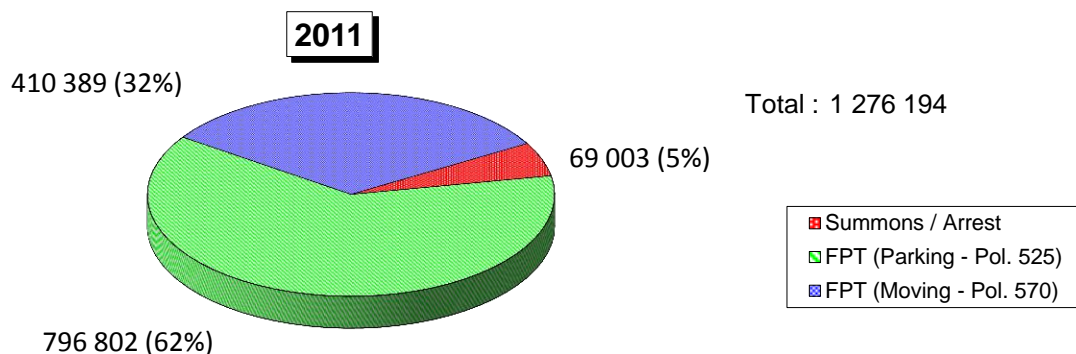
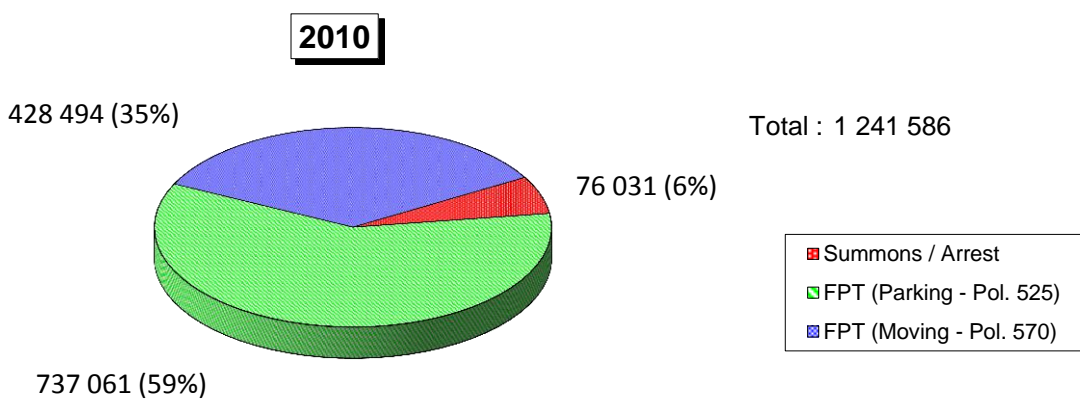
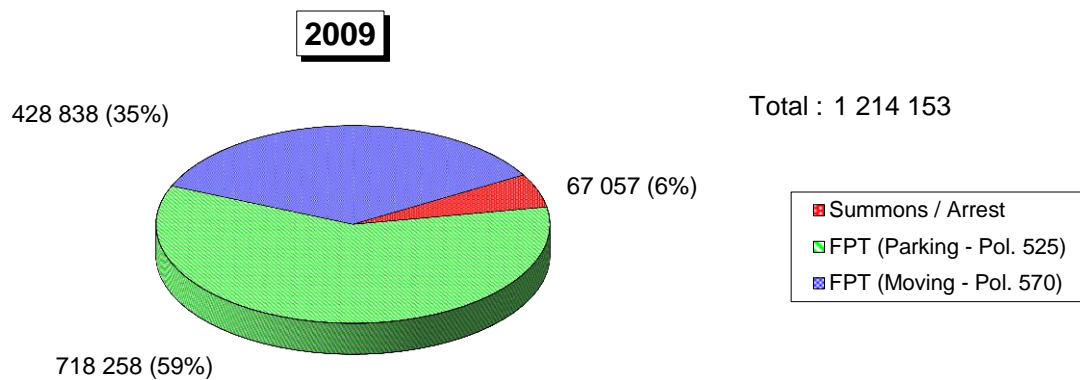
Table 29 - Comparison of Traffic Casualties by Age Group



**Part B**

**Traffic Enforcement Statistics for 2011**

Table 30 - Comparison of Traffic Enforcement



Fixed Penalty Tickets (FPT) / Summons / Arrest

Road traffic enforcement statistics for 2011 compared with 2010 are as follows :

	<u>2010</u>	<u>2011</u>	<u>+ % Change</u>	
FPT (Parking - Pol. 525)	737 061	796 802	+59 741	(+8%)
FPT (Moving - Pol. 570)	428 494	410 389	-18 105	(-4%)
Summons / Arrest	76 031	69 003	-7 028	(-9%)
<b>Total</b>	<b>1 241 586</b>	<b>1 276 194</b>	<b>+34 608</b>	<b>(+3%)</b>

Table 31 - Comparison of Selective Traffic Enforcement Policy (STEP) Statistics

	Offences	2009		2010		2011	
		S/Arr	FPT	S/Arr	FPT	S/Arr	FPT
*	Drink driving	1 024		1 147		1 026	
*	Drug driving	11		84		51	
* 1	Dangerous driving (included causing death)	359		651		609	
* 1.1	Dangerous driving causing grievous bodily harm	0		0		9	
* 2	Careless driving	15 760		16 585		16 286	
* 3	Speeding by 15+ km/h to 30 km/h	1 539	115 195	1 974	123 266	1 689	95 032
* 3.1	Speeding by 30+ km/h to 45 km/h	144	7 068	181	6 394	155	5 250
* 3.2	Speeding by more than 45 km/h	534	3	399	2	378	2
3.3	Speeding by 15 km/h or less	475	67 310	606	83 690	823	84 663
* 4	Double white line offences	177	17 712	181	16 603	223	16 119
* 5	Traffic signal offences	552	43 109	591	32 256	933	49 942
6	U turn causing obstruction	0	25	0	24	0	38
7	Overloading	1 066	5 677	1 178	6 784	1 090	6 621
8	Insecure load	27	1 170	18	1 034	25	1 011
9	Traffic sign offences	617	43 916	553	37 805	1 023	37 637
10	Expressway offside lane restriction	70	5 728	233	6 050	275	7 379
10.1	Overtaking on the nearside	5	893	5	830	3	1 274
10.2	Failing to drive on nearside lane	5		9		10	
11	Box junction offence	3	1 180	2	1 411	3	1 013
11.1	Yellow stripe crossing		1 551		2 333		1 737
12	Seatbelt offences	1 260	13 473	1 947	14 220	1 664	12 777
13	Using handheld mobile phone/telecommunications equipment while vehicle is in motion	57	33 999	61	33 870	43	32 890
* 14	Driving in a motor race or speed trial	1		46		19	
* 15	Failing to give precedence to pedestrian on zebra crossing	4	390	3	135	9	209
16	Construction and maintenance offences	5 017	158	6 419	111	4 720	148
17	Road work signage and lighting offences	351		412		361	
A1	STEP offences by Drivers	29 058	358 557	33 285	366 818	31 427	353 742
	<b>Sub-total</b>	<b>387 615</b>		<b>400 103</b>		<b>385 169</b>	
A2	Other moving offences by Drivers	10 125	70 281	9 797	61 676	8 615	56 647
<b>A3</b>	<b>Total traffic offences by Drivers</b>	<b>468 021</b>		<b>471 576</b>		<b>450 431</b>	
16	Reckless cycling	6		5		12	
17	Careless cycling	213		206		218	
18	Cycling under the influence of drink or drug	0		0		0	
19	Negligent riding	0		0		0	
B1	STEP offences by Cyclists	219		211		230	
B2	Other moving offences by Cyclists	6 789		9 016		8 424	
<b>B3</b>	<b>Total traffic offences by Cyclists</b>	<b>7 008</b>		<b>9 227</b>		<b>8 654</b>	
C1	STEP offences by Drivers and Cyclists	29 277	358 557	33 496	366 818	31 657	353 742
C2	Other moving offences by Drivers and Cyclists	16 914	70 281	18 813	61 676	17 039	56 647
<b>C3</b>	<b>Total traffic offences by Drivers and Cyclists</b>	<b>46 191</b>	<b>428 838</b>	<b>52 309</b>	<b>428 494</b>	<b>48 696</b>	<b>410 389</b>
		<b>475 029</b>		<b>480 803</b>		<b>459 085</b>	
D1	STEP offences by Pedestrians	20 802		23 599		20 178	
D2	Other offences by Pedestrians	64		123		129	
<b>D3</b>	<b>Total Pedestrian offences</b>	<b>20 866</b>		<b>23 722</b>		<b>20 307</b>	
E1	Total STEP offences	408 636		423 913		405 577	
E2	Total other offences	87 259		80 612		73 815	
<b>E3</b>	<b>Grand total</b>	<b>495 895</b>		<b>504 525</b>		<b>479 392</b>	
<b>F1</b>	<b>Total Pol. 525</b>	<b>718 258</b>		<b>737 061</b>		<b>796 802</b>	
G1	Verbal warnings - Drivers	200 531		212 074		203 200	
G2	Verbal warnings - Cyclists	11 268		12 120		12 188	
G3	Verbal warnings - Pedestrians	32 939		32 179		26 844	
<b>G4</b>	<b>Total Warnings</b>	<b>244 738</b>		<b>256 373</b>		<b>242 232</b>	

\* Driving Offence Points Incurred

S/Arr stands for Summons/Arrests

FPT stands for Fixed Penalty Tickets (Moving Offences - Pol. 570)

Table 32 - Enforcement Statistics by Police Regions in 2011

Offences	HKI		KE		KW		NTS		NTN		M		THQ		Total		
	S/Arr	FPT	S/Arr	FPT	S/Arr	FPT	S/Arr	FPT	S/Arr	FPT	S/Arr	FPT	S/Arr	FPT **	S/Arr	FPT	
* Drink Driving	90		288		164		250		234						1 026		
* Drug Driving	12		8		7		9		15						51		
*1 Dangerous driving (included causing death)	54		52		68		105		330						609		
*1.1 Dangerous driving causing grievous bodily harm			4				4		1						9		
*2 Careless driving	3 222		2 098		4 076		3 703		3 186				1		16 286		
*3 Speeding by 15+ km/h to 30 km/h	71	6 269	118	13 286	28	4 189	1 161	56 864	291	14 424			20		1 689	95 032	
*3.1 Speeding by 30+ km/h to 45 km/h	8	524	12	895	4	262	86	2 527	41	1 042			4		155	5 250	
*3.2 Speeding by more than 45 km/h	39		31		36		151		121	2					378	2	
3.3 Speeding by 15 km/h or less	215	22 712	92	17 455	26	8 142	26	6 301	463	30 053			1		823	84 663	
*4 Double white line offences	84	4 758	21	3 095	30	3 904	41	3 036	29	1 326			18		223	16 119	
*5 Traffic signal offences	132	7 922	97	5 402	291	18 319	89	7 316	299	10 983			25		933	49 942	
6 U turn causing obstruction		7		7		13		7		4						38	
7 Overloading	7	163	13	603	11	1 098	382	3 014	622	1 743			55		1 090	6 621	
8 Insecure load	5	50	2	314	3	35	2	495	13	117					25	1 011	
9 Traffic sign offences	130	13 873	18	5 172	44	8 608	810	6 329	11	3 655			10		1 023	37 637	
10 Expressway offside lane restriction	12	759	1	351	1	336	116	4 180	141	1 753			4		275	7 379	
10.1 Overtaking on the nearside		12		8		6	1	595	2	653					3	1 274	
10.2 Failing to drive on nearside lane							7		1				2		10		
11 Box junction offence		286		34	2	573		94	1	26					3	1 013	
11.1 Yellow stripe crossing		229		7		1 490		8		3						1 737	
12 Seat belt offences	621	2 967	311	905	204	3 097	231	3 287	293	2 521			4		1 664	12 777	
13 Using handheld mobile phone/telecommunications equipment while vehicle is in motion	3	5 046	9	2 868	2	4 993	6	9 702	14	10 281			9		43	32 890	
*14 Driving in a motor race or speed trial									19						19		
*15 Failing to give precedence to pedestrian on zebra crossing	5	43		31		21		44	2	70			2		9	209	
16 Construction and maintenance offences	2 299	38	279	32	443	8	735	41	962	29			2		4 720	148	
17 Road work signage and lighting offences	83		98		41		102		37						361		
A1 STEP offences by Drivers	7 092	65 658	3 552	50 465	5 481	55 094	8 017	103 840	7 128	78 685			157		31 427	353 742	
<b>Sub-total</b>	<b>72 750</b>		<b>54 017</b>		<b>60 575</b>		<b>111 857</b>		<b>85 813</b>		<b>0</b>		<b>157</b>		<b>385 169</b>		
A2 Other moving offences by Drivers	1 737	16 406	1 238	6 413	2 065	14 195	1 878	9 851	1 663	9 782	18		16		8 615	56 647	
A3 <b>Total traffic offences by Drivers</b>	<b>90 893</b>		<b>61 668</b>		<b>76 835</b>		<b>123 586</b>		<b>97 258</b>		<b>18</b>		<b>173</b>		<b>450 431</b>		
18 Reckless cycling			2		4		3		3						12		
19 Careless cycling	20		39		33		49		74		3				218		
20 Cycling under the influence of drink or drug																	
21 Negligent riding																	
B1 STEP offences by Cyclists	20		41		37		52		77		3				230		
B2 Other moving offences by Cyclists	138		565		844		1 458		5 313		106				8 424		
B3 <b>Total Traffic offences by Cyclists</b>	<b>158</b>		<b>606</b>		<b>881</b>		<b>1 510</b>		<b>5 390</b>		<b>109</b>		<b>0</b>		<b>8 654</b>		
C1 STEP offences by Drivers and Cyclists	7 112	65 658	3 593	50 465	5 518	55 094	8 069	103 840	7 205	78 685	3		157		31 657	353 742	
C2 Other moving offences by Drivers and Cyclists	1 875	16 406	1 803	6 413	2 909	14 195	3 336	9 851	6 976	9 782	124		16		17 039	56 647	
C3 <b>Total traffic offences by Drivers and Cyclists</b>	<b>8 987</b>	<b>82 064</b>	<b>5 396</b>	<b>56 878</b>	<b>8 427</b>	<b>69 289</b>	<b>11 405</b>	<b>113 691</b>	<b>14 181</b>	<b>88 467</b>	<b>127</b>		<b>173</b>		<b>48 696</b>	<b>410 389</b>	
	<b>91 051</b>		<b>62 274</b>		<b>77 716</b>		<b>125 096</b>		<b>102 648</b>		<b>127</b>		<b>173</b>		<b>459 085</b>		
D1 STEP offences by Pedestrians	1 610		2 543		6 540		3 452		6 033						20 178		
D2 Other offences by Pedestrians			128						1						129		
D3 <b>Total Pedestrian offences</b>	<b>1 610</b>		<b>2 671</b>		<b>6 540</b>		<b>3 452</b>		<b>6 034</b>		<b>0</b>		<b>0</b>		<b>20 307</b>		
E1 Total STEP offences		74 380		56 601		67 152		115 361		91 923			3		157	405 577	
E2 Total other offences		18 281		8 344		17 104		13 187		16 759		124		16	73 815		
E3 <b>Grand total</b>	<b>92 661</b>		<b>64 945</b>		<b>84 256</b>		<b>128 548</b>		<b>108 682</b>		<b>127</b>		<b>173</b>		<b>479 392</b>		
F1 <b>Total Pol. 525</b>		<b>182 755</b>		<b>86 884</b>		<b>288 995</b>		<b>100 449</b>		<b>137 719</b>		<b>0</b>		<b>0</b>		<b>796 802</b>	
G1 Verbal warnings - Drivers		11 944		47 884		80 520		61 487		1 365					203 200		
G2 Verbal warnings - Cylists		53		1 188		1 232		5 826		3 889					12 188		
G3 Verbal warnings - Pedestrians		1 902		5 629		4 422		9 468		5 423					26 844		
G4 <b>Total Warnings</b>		<b>13 899</b>		<b>54 701</b>		<b>86 174</b>		<b>76 781</b>		<b>10 677</b>		<b>0</b>		<b>0</b>	<b>242 232</b>		

\* Driving Offence Points Incurred  
 \*\* FPT (Moving Offences - Pol. 570) of CTPD included in respective Regions.  
 S/Arr stands for Summons/Arrests  
 FPT stands for Fixed Penalty Tickets (Moving Offences - Pol. 570)



Table 33 - Complaints against Taxi Related Offences in 2011

Complaints received for	Complaints reported to Police (including TCU referrals)						Complaints reported to TCU	Referral from TCU to Police
	HKI	KE	KW	NTS	NTN	Total		
Soliciting Passengers	375	13	0	2	7	397	33	4
Refusing hire	405	90	180	221	300	1 196	2 111	733
Refusing to drive to destination	107	20	52	35	50	264	379	68
Failing to drive to destination by direct route	255	145	260	138	38	836	1 511	199
Overcharging	126	39	122	94	94	475	1 255	159
Taximeter offences	19	19	32	28	1	99	389	56
Behaving other than in a civil and orderly manner	327	63	169	88	82	729	1 635	196
Others	118	183	117	831	28	1 277	1 245	374
<b>Total</b>	<b>1 732</b>	<b>572</b>	<b>932</b>	<b>1 437</b>	<b>600</b>	<b>5 273</b>	<b>8 558</b>	<b>1 789</b>

**Table 34 - Prosecutions against Taxi Related Offences in 2011**

<b>Action</b>	<b>Offence</b>	<b>HKI</b>	<b>KE</b>	<b>KW</b>	<b>NTS</b>	<b>NTN</b>	<b>Total</b>
Pol. 570 (FPT)	Taxi driver not moving forward at taxi stand	0	0	0	0	11	11
	Taxi driver of first or second taxi at taxi stand not sitting in or standing beside his taxi	16	6	15	4	6	47
	Taxi driver at stand accepting hire out of turn	3	0	1	2	3	9
	Not setting taximeter to recording position	0	0	0	0	11	11
	Seatbelt offences	291	119	270	369	100	1 149
	<i>Sub-total</i>	<i>310</i>	<i>125</i>	<i>286</i>	<i>375</i>	<i>131</i>	<i>1 227</i>
Summons or Arrest	Soliciting passenger	27	0	0	0	0	27
	Refusing hire	16	6	8	4	0	34
	Refusing to drive to destination	12	4	5	5	0	26
	Failing to drive to destination by the most direct and practicable route	8	1	11	6	1	27
	Overcharging	4	1	8	1	7	21
	Taximeter offences	5	0	4	0	0	9
	Stopping elsewhere than at taxi stand	10	0	0	0	10	20
	Behaving other than in a civil and orderly manner	14	9	15	5	11	54
	Seatbelt offences	276	11	3	1	0	291
	Taxi stand offences	116	13	413	170	8	720
	Taxi driver identity plate offences	6	0	47	103	2	158
	Other offences	25	2	101	33	9	170
	<i>Sub-total</i>	<i>519</i>	<i>47</i>	<i>615</i>	<i>328</i>	<i>48</i>	<i>1 557</i>
<b>Grand Total</b>		<b>829</b>	<b>172</b>	<b>901</b>	<b>703</b>	<b>179</b>	<b>2 784</b>

Table 35 - Prosecutions Arising from Traffic Accidents

<b>Offence</b>	<b>2010</b>	<b>2011</b>	<b>±% change</b>
Dangerous Driving Causing Death	38	39	+3%
Dangerous Driving	325	211	-35%
Careless Driving	12 296	12 310	+0.1%
Speeding	27	2	-93%
Drink Driving	176	192	+9%
Defective Vehicles	1 207	657	-46%
Others	2 478	1 853	-25%
<b>Total (Summons/Arrest)</b>	<b>16 547</b>	<b>15 264</b>	<b>-8%</b>

Table 36 - Enforcement Statistics by Police Formations in 2011 - HKI

Offences	T HKI		EU HKI		Central		Wanchai		Western		Eastern		Total	
	S/Arr	FPT	S/Arr	FPT	S/Arr	FPT	S/Arr	FPT	S/Arr	FPT	S/Arr	FPT		FPT #
* Drink Driving	90												90	
* Drug Driving	12												12	
*1 Dangerous driving (included causing death)	54												54	
*1.1 Dangerous driving causing grievous bodily harm														
*2 Careless driving	3 205		2		2		4		6		3		3 222	
*3 Speeding by 15+ km/h to 30 km/h	71	6 269											71	6 269
*3.1 Speeding by 30+ km/h to 45 km/h	8	524											8	524
*3.2 Speeding by more than 45 km/h	39												39	
3.3 Speeding by 15 km/h or less	215	22 712											215	22 712
*4 Double white line offences	78	4 419	2	12		37	3	137	1	127		26	84	4 758
*5 Traffic signal offences	132	7 839		3		9		16		44		11	132	7 922
6 U turn causing obstruction		1								6				7
7 Overloading	7	163											7	163
8 Insecure load	5	44								1		5	5	50
9 Traffic sign offences	59	8 233		18	4	1 420	59	2 339	2	846	6	1 017	130	13 873
10 Expressway offside lane restriction	12	759											12	759
10.1 Overtaking on the nearside		10						2						12
10.2 Failing to drive on nearside lane														
11 Box junction offence		184				9		77		14		2		286
11.1 Yellow stripe crossing		120				11		91		4		3		229
12 Seat belt offences	582	2 289				56	39	272		284		66	621	2 967
13 Using handheld mobile phone/telecommunications equipment while vehicle is in motion	2	4 236		7		79	1	298		320		106	3	5 046
*14 Driving in a motor race or speed trial														
*15 Failing to give precedence to pedestrian on zebra crossing	4	38		1					1	2			5	43
16 Construction and maintenance offences	2 290	36				2			9				2 299	38
17 Road work signage and lighting offences	83												83	
A1 STEP offences by Drivers	6 948	57 876	4	41	6	1 623	106	3 232	19	1 648	9	1 238	7 092	65 658
<b>Sub-total</b>	<b>64 824</b>		<b>45</b>		<b>1 629</b>		<b>3 338</b>		<b>1 667</b>		<b>1 247</b>		<b>72 750</b>	
A2 Other moving offences by Drivers	1 387	7 699	4	39	61	3 721	133	2 570	40	1 491	112	841	1 737	16 406
<b>A3 Total traffic offences by Drivers</b>	<b>73 910</b>		<b>88</b>		<b>5 411</b>		<b>6 041</b>		<b>3 198</b>		<b>2 200</b>		<b>90 893</b>	
18 Reckless cycling														
19 Careless cycling	18										2		20	
20 Cycling under the influence of drink or drug														
21 Negligent riding														
B1 STEP offences by Cyclists	18										2		20	
B2 Other moving offences by Cyclists	45						74		2		17		138	
<b>B3 Total Traffic offences by Cyclists</b>	<b>63</b>		<b>0</b>		<b>0</b>		<b>74</b>		<b>2</b>		<b>19</b>		<b>158</b>	
C1 STEP offences by Drivers and Cyclists	6 966	57 876	4	41	6	1 623	106	3 232	19	1 648	11	1 238	7 112	65 658
C2 Other moving offences by Drivers and Cyclists	1 432	7 699	4	39	61	3 721	207	2 570	42	1 491	129	841	1 875	16 406
<b>C3 Total traffic offences by Drivers and Cyclists</b>	<b>8 398</b>	<b>65 575</b>	<b>8</b>	<b>80</b>	<b>67</b>	<b>5 344</b>	<b>313</b>	<b>5 802</b>	<b>61</b>	<b>3 139</b>	<b>140</b>	<b>2 079</b>	<b>8 987</b>	<b>82 064</b>
	<b>73 973</b>		<b>88</b>		<b>5 411</b>		<b>6 115</b>		<b>3 200</b>		<b>2 219</b>		<b>91 051</b>	
D1 STEP offences by Pedestrians	245				182		293		712		178		1 610	
D2 Other offences by Pedestrians														
<b>D3 Total Pedestrian offences</b>	<b>245</b>		<b>0</b>		<b>182</b>		<b>293</b>		<b>712</b>		<b>178</b>		<b>1 610</b>	
E1 Total STEP offences	65 087		45		1 811		3 631		2 379		1 427		74 380	
E2 Total other offences	9 131		43		3 782		2 777		1 533		970		18 281	
<b>E3 Grand total</b>	<b>74 218</b>		<b>88</b>		<b>5 593</b>		<b>6 408</b>		<b>3 912</b>		<b>2 397</b>		<b>92 661</b>	
<b>F1 Total Pol. 525</b>	<b>5 244</b>		<b>122</b>		<b>36 518</b>		<b>52 026</b>		<b>41 889</b>		<b>46 956</b>		<b>182 755</b>	
G1 Verbal warnings - Drivers	245						1 111		10 582		6		11 944	
G2 Verbal warnings - Cylists	20						29				4		53	
G3 Verbal warnings - Pedestrians	113				184		182		833		590		1 902	
<b>G4 Total Warnings</b>	<b>378</b>		<b>0</b>		<b>184</b>		<b>1 322</b>		<b>11 415</b>		<b>600</b>		<b>13 899</b>	

# Including 45 FPT (Moving Offences - Pol. 570) from CTPD.  
 \* Driving Offence Points Incurred  
 S/Arr stands for Summons/Arrests  
 FPT stands for Fixed Penalty Tickets (Moving Offences - Pol. 570)

Table 37 - Enforcement Statistics by Police Formations in 2011 - KE

Offences	T KE		EU KE		Wong Tai Sin		Sau Mau Ping		Kwun Tong		Total	
	S/Arr	FPT	S/Arr	FPT	S/Arr	FPT	S/Arr	FPT	S/Arr	FPT	S/Arr	FPT #
* Drink Driving	288										288	
* Drug Driving	8										8	
*1 Dangerous driving (included causing death)	50		2								52	
*1.1 Dangerous driving causing grievous bodily harm	4										4	
*2 Careless driving	2 070		1		6		9		12		2 098	
*3 Speeding by 15+ km/h to 30 km/h	118	13 286									118	13 286
*3.1 Speeding by 30+ km/h to 45 km/h	12	895									12	895
*3.2 Speeding by more than 45 km/h	31										31	
3.3 Speeding by 15 km/h or less	92	17 455									92	17 455
*4 Double white line offences	18	2 760		9		149	2	88	1	89	21	3 095
*5 Traffic signal offences	95	5 343		5		24		10	2	20	97	5 402
6 U turn causing obstruction		5		1		1						7
7 Overloading	13	603									13	603
8 Insecure load	2	298		1		1		6		8	2	314
9 Traffic sign offences	9	3 242	1	4	5	342	1	1 024	2	560	18	5 172
10 Expressway offside lane restriction	1	346						3		2	1	351
10.1 Overtaking on the nearside		8										8
10.2 Failing to drive on nearside lane												
11 Box junction offence		22				5		6		1		34
11.1 Yellow stripe crossing		4				2		1				7
12 Seatbelt offences	149	763			29	55	7	37	126	50	311	905
13 Using handheld mobile phone/telecommunications equipment while vehicle is in motion	9	2 528		3		89		152		96	9	2 868
*14 Driving in a motor race or speed trial												
*15 Failing to give precedence to pedestrian on zebra crossing		20				4				7		31
16 Construction and maintenance offences	278	31				1	1				279	32
17 Road work signage and lighting offences	98										98	
A1 STEP offences by Drivers	3 345	47 609	4	23	40	673	20	1 327	143	833	3 552	50 465
Sub-total	50 954		27		713		1 347		976		54 017	
A2 Other moving offences by Drivers	940	3 552	15	32	83	846	56	918	144	1 030	1 238	6 413
<b>A3 Total traffic offences by Drivers</b>	<b>55 446</b>		<b>74</b>		<b>1 642</b>		<b>2 321</b>		<b>2 150</b>		<b>61 668</b>	
18 Reckless cycling	2										2	
19 Careless cycling	38								1		39	
20 Cycling under the influence of drink or drug												
21 Negligent riding												
B1 STEP offences by Cyclists	40								1		41	
B2 Other moving offences by Cyclists	77		1		66		50		371		565	
<b>B3 Total Traffic offences by Cyclists</b>	<b>117</b>		<b>1</b>		<b>66</b>		<b>50</b>		<b>372</b>		<b>606</b>	
C1 STEP offences by Drivers and Cyclists	3 385	47 609	4	23	40	673	20	1 327	144	833	3 593	50 465
C2 Other moving offences by Drivers and Cyclists	1 017	3 552	16	32	149	846	106	918	515	1 030	1 803	6 413
<b>C3 Total traffic offences by Drivers and Cyclists</b>	<b>4 402</b>	<b>51 161</b>	<b>20</b>	<b>55</b>	<b>189</b>	<b>1 519</b>	<b>126</b>	<b>2 245</b>	<b>659</b>	<b>1 863</b>	<b>5 396</b>	<b>56 878</b>
D1 STEP offences by Pedestrians	463				702		418		960		2 543	
D2 Other offences by Pedestrians	63				59		3		3		128	
<b>D3 Total Pedestrian offences</b>	<b>526</b>		<b>0</b>		<b>761</b>		<b>421</b>		<b>963</b>		<b>2 671</b>	
E1 Total STEP offences	51 457		27		1 415		1 765		1 937		56 601	
E2 Total other offences	4 632		48		1 054		1 027		1 548		8 344	
<b>E3 Grand total</b>	<b>56 089</b>		<b>75</b>		<b>2 469</b>		<b>2 792</b>		<b>3 485</b>		<b>64 945</b>	
<b>F1 Total Pol. 525</b>	<b>311</b>		<b>15</b>		<b>29 925</b>		<b>17 980</b>		<b>38 653</b>		<b>86 884</b>	
G1 Verbal warnings - Drivers			9		23 246		7 861		16 768		47 884	
G2 Verbal warnings - Cyclists	1 122		64				2				1 188	
G3 Verbal warnings - Pedestrians	5 255		81		61		104		128		5 629	
<b>G4 Total Warnings</b>	<b>6 377</b>		<b>154</b>		<b>23 307</b>		<b>7 967</b>		<b>16 896</b>		<b>54 701</b>	

# Including 35 FPT (Moving Offences - Pol. 570) from CTPD.  
 \* Driving Offence Points Incurred  
 S/Arr stands for Summons/Arrests  
 FPT stands for Fixed Penalty Tickets (Moving Offences - Pol. 570)

Table 38 - Enforcement Statistics by Police Formations in 2011 - KW

Offences	T KW		EU KW		Yau Tsim		Shamshuipo		Mongkok		Kowloon City		Total	
	S/Arr	FPT	S/Arr	FPT	S/Arr	FPT	S/Arr	FPT	S/Arr	FPT	S/Arr	FPT	S/Arr	FPT #
* Drink Driving	164												164	
* Drug Driving	7												7	
*1 Dangerous driving (included causing death)	60		1				7						68	
*1.1 Dangerous driving causing grievous bodily harm														
*2 Careless driving	4 003		6		8		7		6		46		4 076	
*3 Speeding by 15+ km/h to 30 km/h	27	4 189					1						28	4 189
*3.1 Speeding by 30+ km/h to 45 km/h	4	262											4	262
*3.2 Speeding by more than 45 km/h	36												36	
3.3 Speeding by 15 km/h or less	26	8 142											26	8 142
*4 Double white line offences	23	3 604		4		53	4	76	1	28	2	139	30	3 904
*5 Traffic signal offences	285	18 202		2	1	31	1	26		17	4	41	291	18 319
6 U turn causing obstruction		4				1		4		1		3		13
7 Overloading	11	1 097										1	11	1 098
8 Insecure load	3	30				2		2		1			3	35
9 Traffic sign offences	20	2 956		9	10	1 879	5	1 683	2	397	7	1 684	44	8 608
10 Expressway offside lane restriction	1	336											1	336
10.1 Overtaking on the nearside		6												6
10.2 Failing to drive on nearside lane														
11 Box junction offence	2	438		5		92		7		15		16	2	573
11.1 Yellow stripe crossing		1 370				95		5		10		10		1 490
12 Seatbelt offences	95	2 646				92		111	104	89	5	159	204	3 097
13 Using handheld mobile phone/telecommunications equipment while vehicle is in motion	1	4 191		1		204	1	185		144		268	2	4 993
*14 Driving in a motor race or speed trial														
*15 Failing to give precedence to pedestrian on zebra crossing		16										5		21
16 Construction and maintenance offences	438	6					3	1		1	2		443	8
17 Road work signage and lighting offences	41												41	
A1 STEP offences by Drivers	5 247	47 495	7	21	19	2 449	29	2 100	113	703	66	2 326	5 481	55 094
Sub-total	52 742		28		2 468		2 129		816		2 392		60 575	
A2 Other moving offences by Drivers	982	3 580	8	19	321	4 815	197	2 122	267	1 267	290	2 354	2 065	14 195
A3 Total traffic offences by Drivers	57 304		55		7 604		4 448		2 350		5 036		76 835	
18 Reckless cycling	4												4	
19 Careless cycling	14				10		6		1		2		33	
20 Cycling under the influence of drink or drug														
21 Negligent riding														
B1 STEP offences by Cyclists	18				10		6		1		2		37	
B2 Other moving offences by Cyclists	252				56		347		119		70		844	
B3 Total Traffic offences by Cyclists	270		0		66		353		120		72		881	
C1 STEP offences by Drivers and Cyclists	5 265	47 495	7	21	29	2 449	35	2 100	114	703	68	2 326	5 518	55 094
C2 Other moving offences by Drivers and Cyclists	1 234	3 580	8	19	377	4 815	544	2 122	386	1 267	360	2 354	2 909	14 195
C3 Total traffic offences by Drivers and Cyclists	6 499	51 075	15	40	406	7 264	579	4 222	500	1 970	428	4 680	8 427	69 289
D1 STEP offences by Pedestrians	864		3		1 271		2 297		1 011		1 094		6 540	
D2 Other offences by Pedestrians														
D3 Total Pedestrian offences	864		3		1 271		2 297		1 011		1 094		6 540	
E1 Total STEP offences	53 624		31		3 749		4 432		1 828		3 488		67 152	
E2 Total other offences	4 814		27		5 192		2 666		1 653		2 714		17 104	
E3 Grand total	58 438		58		8 941		7 098		3 481		6 202		84 256	
F1 Total Pol. 525	396		46		77 882		76 007		65 702		68 962		288 995	
G1 Verbal warnings - Drivers	121				22 857		8 286		35 296		13 960		80 520	
G2 Verbal warnings - Cyclists	938				138		26		118		12		1 232	
G3 Verbal warnings - Pedestrians	2 412				723		509		462		316		4 422	
G4 Total Warnings	3 471		0		23 718		8 821		35 876		14 288		86 174	

# Including 38 FPT (Moving Offences - Pol. 570) from CTPD.  
 \* Driving Offence Points Incurred  
 S/Arr stands for Summons/Arrests  
 FPT stands for Fixed Penalty Tickets (Moving Offences - Pol. 570)

Table 39 - Enforcement Statistics by Police Formations in 2011 - NTS

Offences	T NTS		EU NTS		Tsuen Wan		Shatin		Kwai Tsing		Lantau		Airport		Total	
	S/Arr	FPT	S/Arr	FPT	S/Arr	FPT	S/Arr	FPT	S/Arr	FPT	S/Arr	FPT	S/Arr	FPT	S/Arr	FPT #
* Drink Driving	250														250	
* Drug Driving	9														9	
*1 Dangerous driving (included causing death)	102				2				1						105	
*1.1 Dangerous driving causing grievous bodily harm	4														4	
*2 Careless driving	3 665		1		8		6		2		16		5		3 703	
*3 Speeding by 15+ km/h to 30 km/h	1 161	56 841										23			1 161	56 864
*3.1 Speeding by 30+ km/h to 45 km/h	86	2 526										1			86	2 527
*3.2 Speeding by more than 45 km/h	151														151	
3.3 Speeding by 15 km/h or less	26	6 301													26	6 301
*4 Double white line offences	36	2 824				62	1	64	1	75		11	3		41	3 036
*5 Traffic signal offences	86	7 221		8		22	2	41		23			1	1	89	7 316
6 U turn causing obstruction		5						1		1						7
7 Overloading	381	3 014											1		382	3 014
8 Insecure load	2	463				1		2		24				5	2	495
9 Traffic sign offences	18	3 611		1		676	1	641	1	1 367		33	790		810	6 329
10 Expressway offside lane restriction	116	4 173				5		1		1					116	4 180
10.1 Overtaking on the nearside	1	594				1									1	595
10.2 Failing to drive on nearside lane	7														7	
11 Box junction offence		36				1		3		54						94
11.1 Yellow stripe crossing		5				3										8
12 Seatbelt offences	84	3 110		1	42	17	27	38	52	59	1	6	25	56	231	3 287
13 Using handheld mobile phone/telecommunications equipment while vehicle is in motion	5	9 391		2		61		79	1	135		2		32	6	9 702
*14 Driving in a motor race or speed trial																
*15 Failing to give precedence to pedestrian on zebra crossing		39				5										44
16 Construction and maintenance offences	697	41					27		9		2				735	41
17 Road work signage and lighting offences	102														102	
A1 STEP offences by Drivers	6 989	100 195	1	12	52	854	64	870	67	1 739	19	76	825	94	8 017	103 840
<b>Sub-total</b>	<b>107 184</b>		<b>13</b>		<b>906</b>		<b>934</b>		<b>1 806</b>		<b>95</b>		<b>919</b>		<b>111 857</b>	
A2 Other moving offences by Drivers	1 424	6 468	6	60	69	836	94	1 064	114	917	20	449	151	24	1 878	9 851
<b>A3 Total traffic offences by Drivers</b>	<b>115 076</b>		<b>79</b>		<b>1 811</b>		<b>2 092</b>		<b>2 837</b>		<b>564</b>		<b>1 094</b>		<b>123 586</b>	
18 Reckless cycling	3														3	
19 Careless cycling	46							1		1		1			49	
20 Cycling under the influence of drink or drug																
21 Negligent riding																
B1 STEP offences by Cyclists	49							1		1		1			52	
B2 Other moving offences by Cyclists	453				156		639		68		137		5		1 458	
<b>B3 Total Traffic offences by Cyclists</b>	<b>502</b>		<b>0</b>		<b>156</b>		<b>640</b>		<b>69</b>		<b>138</b>		<b>5</b>		<b>1 510</b>	
C1 STEP offences by Drivers and Cyclists	7 038	100 195	1	12	52	854	65	870	68	1 739	20	76	825	94	8 069	103 840
C2 Other moving offences by Drivers and Cyclists	1 877	6 468	6	60	225	836	733	1 064	182	917	157	449	156	24	3 336	9 851
<b>C3 Total traffic offences by Drivers and Cyclists</b>	<b>8 915</b>	<b>106 663</b>	<b>7</b>	<b>72</b>	<b>277</b>	<b>1 690</b>	<b>798</b>	<b>1 934</b>	<b>250</b>	<b>2 656</b>	<b>177</b>	<b>525</b>	<b>981</b>	<b>118</b>	<b>11 405</b>	<b>113 691</b>
<b>Sub-total</b>	<b>115 578</b>		<b>79</b>		<b>1 967</b>		<b>2 732</b>		<b>2 906</b>		<b>702</b>		<b>1 099</b>		<b>125 096</b>	
D1 STEP offences by Pedestrians	1 179				577		434		1 073		63		126		3 452	
D2 Other offences by Pedestrians																
<b>D3 Total Pedestrian offences</b>	<b>1 179</b>		<b>0</b>		<b>577</b>		<b>434</b>		<b>1 073</b>		<b>63</b>		<b>126</b>		<b>3 452</b>	
E1 Total STEP offences	108 412		13		1 483		1 369		2 880		159		1 045		115 361	
E2 Total other offences	8 345		66		1 061		1 797		1 099		606		180		13 187	
<b>E3 Grand total</b>	<b>116 757</b>		<b>79</b>		<b>2 544</b>		<b>3 166</b>		<b>3 979</b>		<b>765</b>		<b>1 225</b>		<b>128 548</b>	
<b>F1 Total Pol. 525</b>	<b>553</b>		<b>0</b>		<b>30 772</b>		<b>38 890</b>		<b>26 775</b>		<b>3 260</b>		<b>199</b>		<b>100 449</b>	
G1 Verbal warnings - Drivers	828				1 152		10 799		48 571		20		117		61 487	
G2 Verbal warnings - Cyclists	307				954		4 297		240		17		11		5 826	
G3 Verbal warnings - Pedestrians	493				2 939		4 105		1 885		34		12		9 468	
<b>G4 Total Warnings</b>	<b>1 628</b>		<b>0</b>		<b>5 045</b>		<b>19 201</b>		<b>50 696</b>		<b>71</b>		<b>140</b>		<b>76 781</b>	

# Including 33 FPT (Moving Offences - Pol. 570) from CTPD.  
 \* Driving Offence Points Incurred  
 S/Arr stands for Summons/Arrests  
 FPT stands for Fixed Penalty Tickets (Moving Offences - Pol. 570)

Table 40 - Enforcement Statistics by Police Formations in 2011 - NTN

	Offences	T NTN		EU NTN		Border		Yuen Long		Tuen Mun		Tai Po		Total	
		S/Arr	FPT	S/Arr	FPT	S/Arr	FPT	S/Arr	FPT	S/Arr	FPT	S/Arr	FPT	S/Arr	FPT #
*	Drink Driving	234												234	
*	Drug Driving	15												15	
*1	Dangerous driving (included causing death)	323						4		1		2		330	
*1.1	Dangerous driving causing grievous bodily harm	1												1	
*2	Careless driving	3 167				1		7		4		7		3 186	
*3	Speeding by 15+ km/h to 30 km/h	291	14 424											291	14 424
*3.1	Speeding by 30+ km/h to 45 km/h	41	1 042											41	1 042
*3.2	Speeding by more than 45 km/h	121	2											121	2
3.3	Speeding by 15 km/h or less	463	30 053											463	30 053
*4	Double white line offences	23	820				219	4	127	1	57	1	103	29	1 326
*5	Traffic signal offences	295	10 848		11		11		49	2	30	2	34	299	10 983
6	U turn causing obstruction		2				1				1				4
7	Overloading	622	1 743											622	1 743
8	Insecure load	13	102				9		2		4			13	117
9	Traffic sign offences	10	569		1		331		864	1	919		971	11	3 655
10	Expressway offside lane restriction	141	1 732				1		6				14	141	1 753
10.1	Overtaking on the nearside	2	648										5	2	653
10.2	Failing to drive on nearside lane	1												1	
11	Box junction offence	1	3				2		9		7		5	1	26
11.1	Yellow stripe crossing		2						1						3
12	Seatbelt offences	221	2 029		1		231	2	118	24	32	46	110	293	2 521
13	Using handheld mobile phone/telecommunications equipment while vehicle is in motion	13	9 510		1		419	1	148		32		171	14	10 281
*14	Driving in a motor race or speed trial	19												19	
*15	Failing to give precedence to pedestrian on zebra crossing	2	60						2		3		5	2	70
16	Construction and maintenance offences	950	26			1	2	6	1			5		962	29
17	Road work signage and lighting offences	37												37	
A1	STEP offences by Drivers	7 006	73 615		14	2	1 226	24	1 327	33	1 085	63	1 418	7 128	78 685
	Sub-total	80 621		14		1 228		1 351		1 118		1 481		85 813	
A2	Other moving offences by Drivers	1 377	3 004		32	43	1 362	108	2 755	56	980	79	1 609	1 663	9 782
A3	Total traffic offences by Drivers	85 002		46		2 633		4 214		2 154		3 169		97 258	
18	Reckless cycling	3												3	
19	Careless cycling	67						5		1		1		74	
20	Cycling under the influence of drink or drug														
21	Negligent riding														
B1	STEP offences by Cyclists	70						5		1		1		77	
B2	Other moving offences by Cyclists	1 533				52		1 714		866		1 148		5 313	
B3	Total Traffic offences by Cyclists	1 603		0		52		1 719		867		1 149		5 390	
C1	STEP offences by Drivers and Cyclists	7 076	73 615		14	2	1 226	29	1 327	34	1 085	64	1 418	7 205	78 685
C2	Other moving offences by Drivers and Cyclists	2 910	3 004		32	95	1 362	1 822	2 755	922	980	1 227	1 609	6 976	9 782
C3	Total traffic offences by Drivers and Cyclists	9 986	76 619	0	46	97	2 588	1 851	4 082	956	2 065	1 291	3 027	14 181	88 467
	Sub-total	86 605		46		2 685		5 933		3 021		4 318		102 648	
D1	STEP offences by Pedestrians	2 122				42		1 577		1 210		1 082		6 033	
D2	Other offences by Pedestrians							1						1	
D3	Total Pedestrian offences	2 122		0		42		1 578		1 210		1 082		6 034	
E1	Total STEP offences	82 813		14		1 270		2 933		2 329		2 564		91 923	
E2	Total other offences	5 914		32		1 457		4 578		1 902		2 836		16 759	
E3	Grand total	88 727		46		2 727		7 511		4 231		5 400		108 682	
F1	Total Pol. 525	252		3		1 360		48 361		32 099		55 644		137 719	
G1	Verbal warnings - Drivers	349				179		208		118		511		1 365	
G2	Verbal warnings - Cyclists	942				215		1 401		350		981		3 889	
G3	Verbal warnings - Pedestrians	1 119				192		2 309		227		1 576		5 423	
G4	Total Warnings	2 410		0		586		3 918		695		3 068		10 677	

# Including 40 FPT (Moving Offences - Pol. 570) from CTPD.  
 \* Driving Offence Points Incurred  
 S/Arr stands for Summons/Arrests  
 FPT stands for Fixed Penalty Tickets (Moving Offences - Pol. 570)